



GRID VIRTUAL GPU

DU-06920-001 _v4.3 (GRID) | June 2017

User Guide



TABLE OF CONTENTS

Chapter 1. Introduction to NVIDIA GRID Virtual GPU.....	1
1.1. How this guide is organized.....	1
1.2. GRID vGPU architecture.....	1
1.3. Supported GPUs.....	3
1.3.1. Virtual GPU types.....	3
1.3.2. Homogeneous virtual GPUs.....	7
1.4. Guest VM support.....	8
1.4.1. Windows guest VM support.....	8
1.4.2. Linux guest VM support.....	8
1.5. GRID vGPU features.....	8
Chapter 2. Getting Started.....	9
2.1. Citrix XenServer.....	9
2.1.1. Prerequisites for using Citrix XenServer with GRID vGPU.....	9
2.1.2. Installing Citrix XenServer and XenCenter.....	10
2.1.3. Changing the Mode of a Tesla M60 or M6 GPU.....	10
2.1.4. Installing and Updating the NVIDIA Virtual GPU Manager for XenServer.....	10
2.1.4.1. Installing the RPM package for XenServer.....	10
2.1.4.2. Updating the RPM package for XenServer.....	11
2.1.4.3. Installing or Updating the Supplemental Pack for XenServer.....	12
2.1.4.4. Verifying the installation of the XenServer GRID package.....	13
2.1.5. Configuring a XenServer VM with Virtual GPU.....	14
2.1.6. Booting the XenServer VM and Installing Drivers.....	15
2.1.7. Applying a vGPU license.....	17
2.1.8. Removing a XenServer VM's vGPU configuration.....	17
2.1.8.1. Removing a VM's vGPU configuration by using XenCenter.....	17
2.1.8.2. Removing a VM's vGPU configuration by using xe.....	18
2.2. VMware vSphere.....	18
2.2.1. Prerequisites for using VMware vSphere with GRID vGPU.....	19
2.2.2. Installing VMware vSphere.....	19
2.2.3. Changing the Mode of a Tesla M60 or M6 GPU.....	19
2.2.4. Installing and Updating the NVIDIA Virtual GPU Manager for vSphere.....	20
2.2.4.1. Installing the NVIDIA Virtual GPU Manager Package for vSphere.....	20
2.2.4.2. Updating the NVIDIA Virtual GPU Manager Package for vSphere.....	20
2.2.4.3. Verifying the installation of the vSphere GRID package.....	21
2.2.5. Changing the Default Graphics Type in VMware vSphere 6.5.....	22
2.2.6. Configuring a vSphere VM with Virtual GPU.....	24
2.2.7. Booting the vSphere VM and Installing Drivers.....	26
2.2.8. Applying a vGPU license.....	27
2.2.9. Removing a vSphere VM's vGPU configuration.....	27
2.2.10. Modifying GPU Assignment for vGPU-Enabled VMs.....	28

2.3. Licensing vGPU on Windows.....	31
Chapter 3. Using vGPU on Linux.....	33
3.1. Installing vGPU drivers on Linux.....	33
3.1.1. Prerequisites for installing the NVIDIA Linux driver.....	33
3.1.2. Running the driver installer.....	34
3.2. Licensing GRID vGPU on Linux.....	36
Chapter 4. Monitoring GPU performance.....	38
4.1. NVIDIA System Management Interface nvidia-smi.....	38
4.2. Monitoring GPU performance from a hypervisor.....	39
4.2.1. Using nvidia-smi to monitor GPU performance from a hypervisor.....	39
4.2.1.1. Getting a summary of all physical GPUs in the system.....	39
4.2.1.2. Getting a summary of all vGPUs in the system.....	40
4.2.1.3. Getting vGPU details.....	41
4.2.1.4. Monitoring vGPU engine usage.....	41
4.2.1.5. Listing supported vGPU types.....	42
4.2.1.6. Listing the vGPU types that can currently be created.....	43
4.2.2. Using Citrix XenCenter to monitor GPU performance.....	44
4.3. Monitoring GPU performance from a guest VM.....	44
4.3.1. Using nvidia-smi to monitor GPU performance from a guest VM.....	45
4.3.2. Using Windows Performance Counters to monitor GPU performance.....	46
4.3.3. Using NVWMI to monitor GPU performance.....	47
Chapter 5. XenServer vGPU Management.....	50
5.1. Management objects for GPUs.....	50
5.1.1. pgpu - physical GPU.....	50
5.1.1.1. Listing the pgpu objects present on a platform.....	50
5.1.1.2. Viewing detailed information about a pgpu object.....	50
5.1.1.3. Viewing physical GPUs in XenCenter.....	51
5.1.2. vgpu-type - virtual GPU type.....	52
5.1.2.1. Listing the vgpu-type objects present on a platform.....	52
5.1.2.2. Viewing detailed information about a vgpu-type object.....	53
5.1.3. gpu-group - collection of physical GPUs.....	53
5.1.3.1. Listing the gpu-group objects present on a platform.....	53
5.1.3.2. Viewing detailed information about a gpu-group object.....	53
5.1.4. vgpu - virtual GPU.....	54
5.2. Creating a vGPU using xe.....	54
5.3. Controlling vGPU allocation.....	54
5.3.1. GPU allocation policy.....	55
5.3.1.1. Controlling GPU allocation policy by using xe.....	55
5.3.1.2. Controlling GPU allocation policy by using XenCenter.....	55
5.3.2. Determining the physical GPU that a virtual GPU is resident on.....	56
5.3.3. Controlling the vGPU types enabled on specific physical GPUs.....	57
5.3.3.1. Controlling vGPU types enabled on specific physical GPUs by using XenCenter... 57	
5.3.3.2. Controlling vGPU types enabled on specific physical GPUs by using xe..... 58	

5.3.4. Creating vGPUs on specific physical GPUs.....	59
5.4. Cloning vGPU-enabled VMs.....	60
5.4.1. Cloning a vGPU-enabled VM by using xe.....	61
5.4.2. Cloning a vGPU-enabled VM by using XenCenter.....	61
5.5. Using GPU pass-through.....	61
5.5.1. Configuring a VM for GPU pass-through by using XenCenter.....	62
5.5.2. Configuring a VM for GPU pass-through by using xe.....	62
Chapter 6. XenServer Performance Tuning.....	64
6.1. XenServer tools.....	64
6.2. Using remote graphics.....	64
6.2.1. Disabling console VGA.....	65
6.3. Allocation strategies.....	65
6.3.1. NUMA considerations.....	65
6.3.2. Maximizing performance.....	66
Chapter 7. Troubleshooting.....	68
7.1. Known issues.....	68
7.2. Troubleshooting steps.....	68
7.2.1. Verifying the NVIDIA kernel driver is loaded.....	68
7.2.2. Verifying that nvidia-smi works.....	69
7.2.3. Examining NVIDIA kernel driver output.....	69
7.2.4. Examining GRID Virtual GPU Manager messages.....	69
7.2.4.1. Examining Citrix XenServer vGPU Manager messages.....	69
7.2.4.2. Examining VMware vSphere vGPU Manager messages.....	70
7.3. Capturing configuration data for filing a bug report.....	70
7.3.1. Capturing configuration data by running nvidia-bug-report.sh.....	71
7.3.2. Capturing configuration data by creating a XenServer status report.....	71
Appendix A. XenServer Basics.....	73
A.1. Opening a dom0 shell.....	73
A.1.1. Accessing the dom0 shell through XenCenter.....	73
A.1.2. Accessing the dom0 shell through an SSH client.....	74
A.2. Copying files to dom0.....	74
A.2.1. Copying files by using an SCP client.....	74
A.2.2. Copying files by using a CIFS-mounted file system.....	75
A.3. Determining a VM's UUID.....	75
A.3.1. Determining a VM's UUID by using xe vm-list.....	76
A.3.2. Determining a VM's UUID by using XenCenter.....	76
A.4. Using more than two vCPUs with Windows client VMs.....	77
A.5. Pinning VMs to a specific CPU socket and cores.....	77
A.6. Changing dom0 vCPU Default configuration.....	78
A.6.1. Changing the number of dom0 vCPUs.....	79
A.6.2. Pinning dom0 vCPUs.....	79
A.7. How GPU locality is determined.....	79

LIST OF FIGURES

Figure 1	GRID vGPU System Architecture	2
Figure 2	GRID vGPU Internal Architecture	3
Figure 3	Example vGPU configurations on GRID K2	7
Figure 4	GRID vGPU Manager supplemental pack selected in XenCenter	12
Figure 5	Successful installation of GRID vGPU Manager supplemental pack	13
Figure 6	Using XenCenter to configure a VM with a vGPU	15
Figure 7	NVIDIA driver installation in the guest VM	16
Figure 8	Verifying NVIDIA driver operation using NVIDIA Control Panel	17
Figure 9	Using XenCenter to remove a vGPU configuration from a VM	18
Figure 10	Shared default graphics type	23
Figure 11	Host graphics settings for vGPU	24
Figure 12	VM settings for vGPU	25
Figure 13	Verifying NVIDIA driver operation using NVIDIA Control Panel	27
Figure 14	Breadth-first allocation scheme setting for vGPU-enabled VMs	29
Figure 15	Host graphics settings for vGPU	30
Figure 16	Depth-first allocation scheme setting for vGPU-enabled VMs	31
Figure 17	NVIDIA Linux driver installer	34
Figure 18	Update xorg.conf settings	35
Figure 19	Verifying operation with nvidia-settings	36
Figure 20	Using Citrix XenCenter to monitor GPU performance	44
Figure 21	Using nvidia-smi from a Windows guest VM	45
Figure 22	Using Windows Performance Monitor to monitor GPU performance	46
Figure 23	Using WMI Explorer to monitor GPU performance	47
Figure 24	Physical GPU display in XenCenter	51

Figure 25	Modifying GPU placement policy in XenCenter	56
Figure 26	Editing a GPU's enabled vGPU types using XenCenter	58
Figure 27	Using a custom GPU group within XenCenter	60
Figure 28	Cloning a VM using XenCenter	61
Figure 29	Using XenCenter to configure a pass-through GPU	62
Figure 30	A NUMA server platform	66
Figure 31	Including NVIDIA logs in a XenServer status report	72
Figure 32	Connecting to the dom0 shell by using XenCenter	74
Figure 33	Using XenCenter to determine a VM's UUID	77

LIST OF TABLES

Table 1	GRID K1 Virtual GPU types	4
Table 2	GRID K2 Virtual GPU types	4
Table 3	Tesla M60 Virtual GPU types	4
Table 4	Tesla M10 Virtual GPU types	5
Table 5	Tesla M6 Virtual GPU types	6
Table 6	Virtual GPUs supporting Linux	8
Table 7	Virtual GPUs supporting Linux	33

Chapter 1.

INTRODUCTION TO NVIDIA GRID VIRTUAL GPU

NVIDIA GRID™ vGPU™ enables multiple virtual machines (VMs) to have simultaneous, direct access to a single physical GPU, using the same NVIDIA graphics drivers that are deployed on non-virtualized Operating Systems. By doing this, GRID vGPU provides VMs with unparalleled graphics performance and application compatibility, together with the cost-effectiveness and scalability brought about by sharing a GPU among multiple workloads.

1.1. How this guide is organized

GRID Virtual GPU User Guide is organized as follows:

- ▶ This chapter introduces the architecture and features of vGPU.
- ▶ [Getting Started](#) provides a step-by-step guide to getting started with vGPU on Citrix XenServer and VMware ESXi.
- ▶ [Using vGPU on Linux](#) describes using vGPU with Linux VMs.
- ▶ [Monitoring GPU performance](#) covers vGPU performance monitoring on XenServer.
- ▶ [XenServer vGPU Management](#) covers vGPU management on XenServer.
- ▶ [XenServer Performance Tuning](#) covers vGPU performance optimization on XenServer.
- ▶ [Troubleshooting](#) provides guidance on troubleshooting.

1.2. GRID vGPU architecture

GRID vGPU's high-level architecture is illustrated in [Figure 1](#). Under the control of NVIDIA's GRID Virtual GPU Manager running under the hypervisor, GRID physical GPUs are capable of supporting multiple virtual GPU devices (vGPUs) that can be assigned directly to guest VMs.

Guest VMs use GRID virtual GPUs in the same manner as a physical GPU that has been passed through by the hypervisor: an NVIDIA driver loaded in the guest VM provides

direct access to the GPU for performance-critical fast paths, and a paravirtualized interface to the GRID Virtual GPU Manager is used for non-performant management operations.

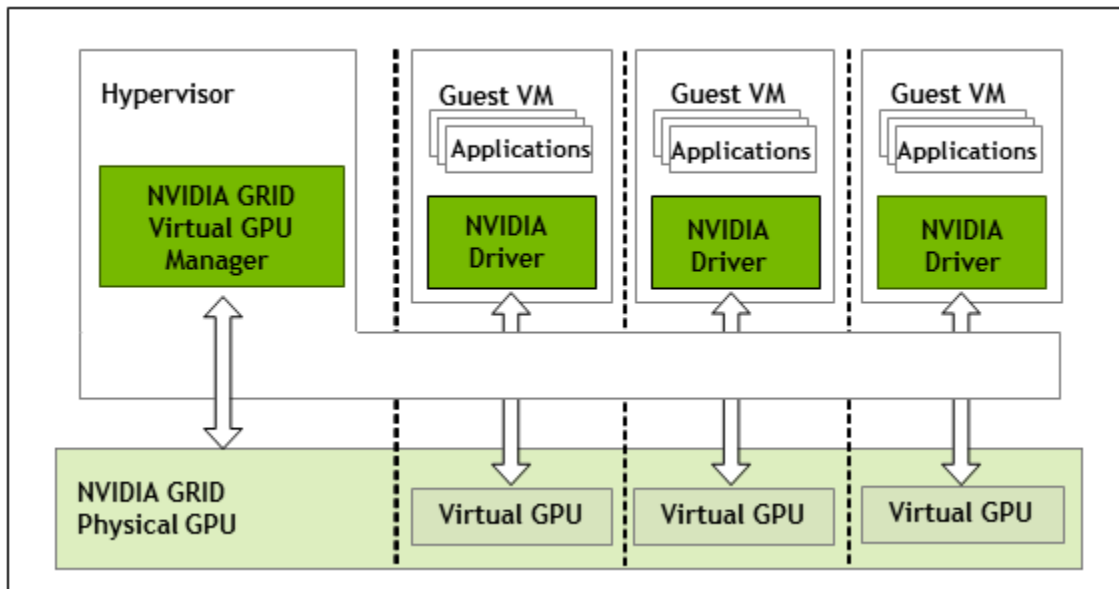


Figure 1 GRID vGPU System Architecture

GRID vGPUs are analogous to conventional GPUs, having a fixed amount of GPU framebuffer, and one or more virtual display outputs or “heads”. The vGPU’s framebuffer is allocated out of the physical GPU’s framebuffer at the time the vGPU is created, and the vGPU retains exclusive use of that framebuffer until it is destroyed.

All vGPUs resident on a physical GPU share access to the GPU’s engines including the graphics (3D), video decode, and video encode engines.

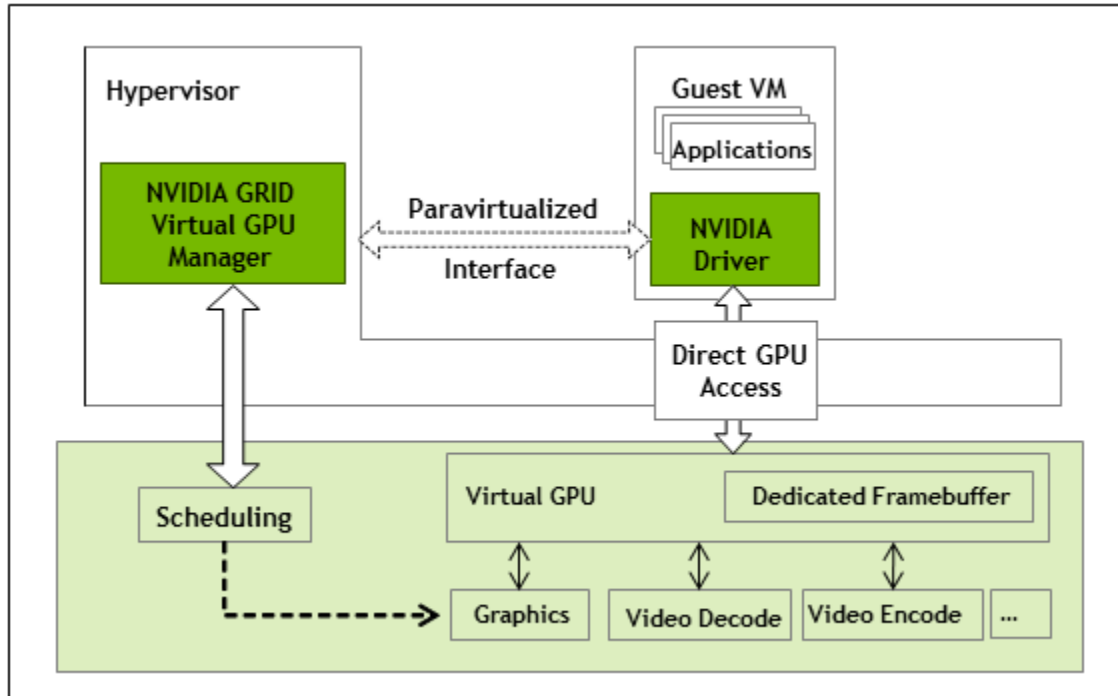


Figure 2 GRID vGPU Internal Architecture

1.3. Supported GPUs

GRID vGPU is supported on NVIDIA GRID K1 and K2 GPUs, and is available as a licensed feature on Tesla M60, Tesla M10, and Tesla M6 GPUs. Refer to the release notes for a list of recommended server platforms to use with GRID GPUs.

1.3.1. Virtual GPU types

GRID K1 and K2 cards, and Tesla M60 and Tesla M10 cards each implement multiple physical GPUs: K2 and Tesla M60 have 2 GPUs onboard; GRID K1 and Tesla M10 have 4 GPUs. Tesla M6 implements a single physical GPU.

Each physical GPU can support several different types of virtual GPU. Virtual GPU types have a fixed amount of frame buffer, number of supported display heads and maximum resolutions, and are targeted at different classes of workload

The virtual GPU types supported by GRID GPUs are defined in [Table 1](#), [Table 2](#), [Table 3](#), [Table 4](#), and [Table 5](#).

Due to their differing resource requirements, the maximum number of vGPUs that can be created simultaneously on a physical GPU varies according to the vGPU type. For example, a GRID K2 physical GPU can support up to 4 K240Q vGPUs on each of its two physical GPUs, for a total of 8 vGPUs, but only 2 K260Qs vGPUs, for a total of 4 vGPUs.

Table 1 GRID K1 Virtual GPU types

Physical GPUs	GRID Virtual GPU	Intended Use Case	Frame Buffer (Mbytes)	Virtual Display Heads	Maximum Resolution per Display Head	Maximum vGPUs per GPU	Maximum vGPUs per Board
4	K180Q	Power User	4096	4	2560×1600	1	4
4	K160Q	Power User	2048	4	2560×1600	2	8
4	K140Q	Power User	1024	2	2560×1600	4	16
4	K120Q	Power User	512	2	2560×1600	8	32
4	K100	Knowledge Worker	256	2	1920×1200	8	32

Table 2 GRID K2 Virtual GPU types

Physical GPUs	GRID Virtual GPU	Intended Use Case	Frame Buffer (Mbytes)	Virtual Display Heads	Maximum Resolution per Display Head	Maximum vGPUs per GPU	Maximum per Board
2	K280Q	Designer	4096	4	2560×1600	1	2
2	K260Q	Power User, Designer	2048	4	2560×1600	2	4
2	K240Q	Power User, Designer	1024	2	2560×1600	4	8
2	K220Q	Power User, Designer	512	2	2560×1600	8	16
2	K200	Knowledge Worker	256	2	1920×1200	8	16

Table 3 Tesla M60 Virtual GPU types

Physical GPUs	GRID Virtual GPU	Intended Use Case	Frame Buffer (Mbytes)	Virtual Display Heads	Maximum Resolution per Display Head	Maximum vGPUs per GPU	Maximum vGPUs per Board
2	M60-8Q	Designer	8192	4	4096×2160	1	2
2	M60-4Q	Designer	4096	4	4096×2160	2	4
2	M60-2Q	Designer	2048	4	4096×2160	4	8

Physical GPUs	GRID Virtual GPU	Intended Use Case	Frame Buffer (Mbytes)	Virtual Display Heads	Maximum Resolution per Display Head	Maximum vGPUs per GPU	Maximum vGPUs per Board
2	M60-1Q	Power User, Designer	1024	2	4096×2160	8	16
2	M60-0Q	Power User, Designer	512	2	2560×1600	16	32
2	M60-1B	Power User	1024	4	2560×1600	8	16
2	M60-0B	Power User	512	2	2560×1600	16	32
2	M60-8A	Virtual Application User	8192	1	1280×1024	1	2
2	M60-4A	Virtual Application User	4096	1	1280×1024	2	4
2	M60-2A	Virtual Application User	2048	1	1280×1024	4	8
2	M60-1A	Virtual Application User	1024	1	1280×1024	8	16

Table 4 Tesla M10 Virtual GPU types

Physical GPUs	GRID Virtual GPU	Intended Use Case	Frame Buffer (Mbytes)	Virtual Display Heads	Maximum Resolution per Display Head	Maximum vGPUs per GPU	Maximum vGPUs per Board
4	M10-8Q	Designer	8192	4	4096×2160	1	4
4	M10-4Q	Designer	4096	4	4096×2160	2	8
4	M10-2Q	Designer	2048	4	4096×2160	4	16
4	M10-1Q	Power User, Designer	1024	2	4096×2160	8	32
4	M10-0Q	Power User, Designer	512	2	2560×1600	16	64
4	M10-1B	Power User	1024	4	2560×1600	8	32
4	M10-0B	Power User	512	2	2560×1600	16	64

Physical GPUs	GRID Virtual GPU	Intended Use Case	Frame Buffer (Mbytes)	Virtual Display Heads	Maximum Resolution per Display Head	Maximum vGPUs per GPU	Maximum vGPUs per Board
4	M10-8A	Virtual Application User	8192	1	1280×1024	1	4
4	M10-4A	Virtual Application User	4096	1	1280×1024	2	8
4	M10-2A	Virtual Application User	2048	1	1280×1024	4	16
4	M10-1A	Virtual Application User	1024	1	1280×1024	8	32

Table 5 Tesla M6 Virtual GPU types

Physical GPUs	GRID Virtual GPU	Intended Use Case	Frame Buffer (Mbytes)	Virtual Display Heads	Maximum Resolution per Display Head	Maximum vGPUs per GPU	Maximum vGPUs per Board
1	M6-8Q	Designer	8192	4	4096×2160	1	1
1	M6-4Q	Designer	4096	4	4096×2160	2	2
1	M6-2Q	Designer	2048	4	4096×2160	4	4
1	M6-1Q	Power User, Designer	1024	2	4096×2160	8	8
1	M6-0Q	Power User, Designer	512	2	2560×1600	16	16
1	M6-1B	Power User	1024	4	2560×1600	8	8
1	M6-0B	Power User	512	2	2560×1600	16	16
1	M6-8A	Virtual Application User	8192	1	1280×1024	1	1
1	M6-4A	Virtual Application User	4096	1	1280×1024	2	2
1	M6-2A	Virtual Application User	2048	1	1280×1024	4	4

Physical GPUs	GRID Virtual GPU	Intended Use Case	Frame Buffer (Mbytes)	Virtual Display Heads	Maximum Resolution per Display Head	Maximum vGPUs per GPU	Maximum vGPUs per Board
1	M6-1A	Virtual Application User	1024	1	1280×1024	8	8



GRID vGPU is a licensed feature on Tesla M6, Tesla M10, and Tesla M60. A software license is required to use full vGPU features within the guest VM. For more details, see [Licensing vGPU on Windows](#), [Licensing GRID vGPU on Linux](#), and [GRID Licensing User Guide](#).

Virtualized applications are rendered in an off-screen buffer. Therefore, the maximum resolution for the A series of GRID vGPUs is independent of the maximum resolution of the display head.

GRID vGPUs with less than 1 Gbyte of frame buffer support only 1 virtual display head on a Windows 10 guest OS.

1.3.2. Homogeneous virtual GPUs

This release of GRID vGPU supports homogeneous virtual GPUs: at any given time, the virtual GPUs resident on a single physical GPU must be all of the same type. However, this restriction doesn't extend across physical GPUs on the same card. Each physical GPU on a K1 or K2 may host different types of virtual GPU at the same time.

For example, a GRID K2 card has two physical GPUs, and can support five types of virtual GPU; GRID K200, K220Q, K240Q, K260Q, and K280Q. [Figure 3](#) shows some example virtual GPU configurations on K2:

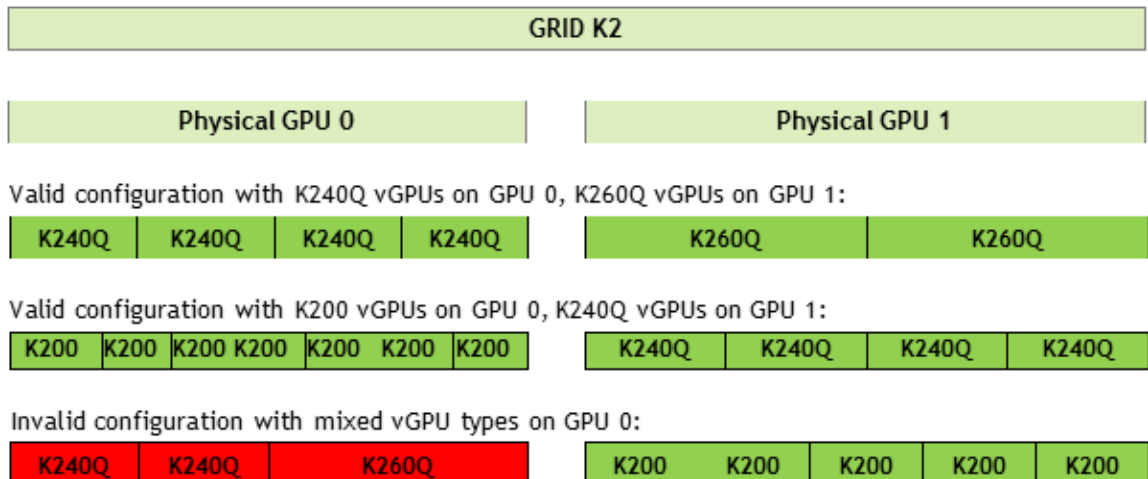


Figure 3 Example vGPU configurations on GRID K2

1.4. Guest VM support

GRID vGPU supports Windows and Linux guest VM operating systems. The supported vGPU types depend on the guest VM OS.

For details of the supported releases of Windows and Linux, and for further information on supported configurations, see the driver release notes for your hypervisor.

1.4.1. Windows guest VM support

Windows guest VMs are supported on all GRID virtual GPU types.

1.4.2. Linux guest VM support

64-bit Linux guest VMs are supported on the following virtual GPU types:

Table 6 Virtual GPUs supporting Linux

Tesla M60	Tesla M10	Tesla M6
M60-8Q	M10-8Q	M6-8Q
M60-4Q	M10-4Q	M6-4Q
M60-2Q	M10-2Q	M6-2Q
M60-1Q	M10-1Q	M6-1Q
M60-0Q	M10-0Q	M6-0Q

1.5. GRID vGPU features

This release of GRID vGPU includes support for:

- ▶ DirectX 12, Direct2D, and DirectX Video Acceleration (DXVA)
- ▶ OpenGL 4.5
- ▶ NVIDIA GRID SDK (remote graphics acceleration)

CUDA and OpenCL are supported on these virtual GPUs:

- ▶ GRID M60-8Q
- ▶ GRID M10-8Q
- ▶ GRID M6-8Q
- ▶ GRID M60-8A
- ▶ GRID M10-8A
- ▶ GRID M6-8A

Chapter 2.

GETTING STARTED

This chapter provides a step-by-step guide to booting a Windows VM on Citrix XenServer and VMware vSphere with NVIDIA Virtual GPU.

2.1. Citrix XenServer

The following topics step you through the process of setting up a single Citrix XenServer VM to use GRID vGPU. After the process is complete, the VM is capable of running the full range of DirectX and OpenGL graphics applications.

These setup steps assume familiarity with the XenServer skills covered in [XenServer Basics](#).

2.1.1. Prerequisites for using Citrix XenServer with GRID vGPU

Before proceeding, ensure that you have these prerequisites:

- ▶ NVIDIA GRID K1, K2, or Tesla M6, M10, M60 cards.
- ▶ A server platform capable of hosting XenServer and the NVIDIA GRID or Tesla cards. Refer to the release notes for a list of recommended servers.
- ▶ The NVIDIA GRID vGPU software package for Citrix XenServer, consisting of the GRID Virtual GPU Manager for XenServer, and NVIDIA GRID vGPU drivers for Windows, 32- and 64-bit.
- ▶ Citrix XenServer 6.2 SP1 with applicable hotfixes, or later, obtainable from Citrix.
- ▶ An installed Windows VM to be enabled with vGPU.

To run Citrix XenDesktop with virtual machines running NVIDIA Virtual GPU, you will also need:

- ▶ Citrix XenDesktop 7.1 or later, obtainable from Citrix.



Earlier versions of Citrix XenServer and XenDesktop are not supported for use with NVIDIA Virtual GPU.

Review the release notes and known issues for GRID Virtual GPU before proceeding with installation.

2.1.2. Installing Citrix XenServer and XenCenter

Install Citrix XenServer and any applicable patches, following Citrix's installation instructions.

Install the Citrix XenCenter management GUI on a PC.

2.1.3. Changing the Mode of a Tesla M60 or M6 GPU

Tesla M60 and M6 GPUs support compute mode and graphics mode. GRID vGPU requires GPUs that support both modes to operate in graphics mode.

Recent Tesla M60 GPUs and M6 GPUs are supplied in graphics mode. However, your GPU might be in compute mode if it is an older Tesla M60 GPU or M6 GPU, or if its mode has previously been changed.

If your GPU supports both modes but is in compute mode, you must use the `gpumodeswitch` tool to change the mode of the GPU to graphics mode. If you are unsure which mode your GPU is in, use the `gpumodeswitch` tool to find out the mode.

For more information, see *gpumodeswitch User Guide*.

2.1.4. Installing and Updating the NVIDIA Virtual GPU Manager for XenServer

The NVIDIA Virtual GPU Manager runs in XenServer's dom0. For all supported XenServer releases, the NVIDIA Virtual GPU Manager is provided as an RPM file. Starting with the XenServer 6.5 SP1 release, the NVIDIA Virtual GPU Manager is also supplied as a Supplemental Pack.



There are separate Virtual GPU Manager files for different versions of XenServer. Consult the release notes for guidance on which package to use for each version of XenServer.

2.1.4.1. Installing the RPM package for XenServer

The RPM file must be copied to XenServer's dom0 prior to installation (see [Copying files to dom0](#)).

1. Use the `rpm` command to install the package:

```
[root@xenserver ~]# rpm -iv NVIDIA-vGPU-xenserver-7.0-367.106.x86_64.rpm
Preparing packages for installation...
NVIDIA-vGPU-xenserver-7.0-367.106
[root@xenserver ~]#
```

2. Reboot the XenServer platform:

```
[root@xenserver ~]# shutdown -r now
```

```
Broadcast message from root (pts/1) (Fri Jun 16 14:24:11 2017):
The system is going down for reboot NOW!
[root@xenserver ~]#
```

2.1.4.2. Updating the RPM package for XenServer

If an existing GRID Virtual GPU Manager is already installed on the system and you want to upgrade, follow these steps:

1. Shut down any VMs that are using GRID vGPU.
2. Install the new package using the `-U` option to the `rpm` command, to upgrade from the previously installed package:

```
[root@xenserver ~]# rpm -Uv NVIDIA-vGPU-xenserver-7.0-367.106.x86_64.rpm
Preparing packages for installation...
NVIDIA-vGPU-xenserver-7.0-367.106
[root@xenserver ~]#
```



You can query the version of the current GRID package using the `rpm -q` command:

```
[root@xenserver ~]# rpm -q NVIDIA-vGPU-xenserver-7.0-367.106
[root@xenserver ~]#
If an existing NVIDIA GRID package is already installed and you
don't select the upgrade (-U) option when installing a newer GRID
package, the rpm command will return many conflict errors.
Preparing packages for installation...
    file /usr/bin/nvidia-smi from install of NVIDIA-
vGPU-xenserver-7.0-367.106.x86_64 conflicts with file from
package NVIDIA-vGPU-xenserver-7.0-367.92.x86_64
    file /usr/lib/libnvidia-ml.so from install of NVIDIA-
vGPU-xenserver-7.0-367.106.x86_64 conflicts with file from
package NVIDIA-vGPU-xenserver-7.0-367.92.x86_64
...
```

3. Reboot the XenServer platform:

```
[root@xenserver ~]# shutdown -r now
Broadcast message from root (pts/1) (Fri Jun 16 14:24:11 2017):
The system is going down for reboot NOW!
[root@xenserver ~]#
```



GRID Virtual GPU Manager and Guest VM drivers must be matched from the same release. After updating vGPU Manager, guest VMs will boot with vGPU disabled until their guest vGPU driver is updated to match the vGPU Manager version. Consult the release notes for further details.

2.1.4.3. Installing or Updating the Supplemental Pack for XenServer

XenCenter can be used to install or update Supplemental Packs on XenServer hosts. The NVIDIA GRID Virtual GPU Manager supplemental pack is provided as an ISO.



NVIDIA GRID Virtual GPU Manager supplemental pack installation and update are supported from XenServer 6.5 SP1 and XenCenter version 6.5 (build 6.5.2.2477) onwards.

1. Select **Install Update** from the **Tools** menu.
2. Click **Next** after going through the instructions on the **Before You Start** section.
3. Click **Select update or supplemental pack from disk** on the **Select Update** section and open NVIDIA's XenServer Supplemental Pack ISO.

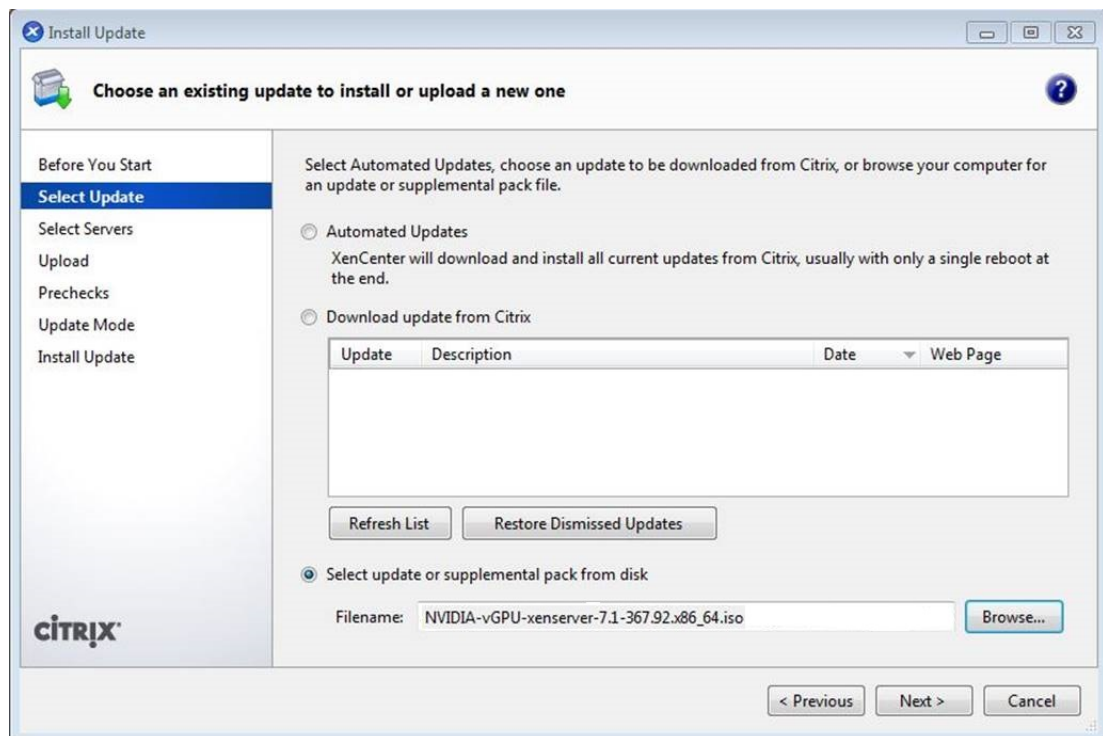


Figure 4 GRID vGPU Manager supplemental pack selected in XenCenter

4. Click **Next** on the **Select Update** section.
5. In the **Select Servers** section select all the XenServer hosts on which the Supplemental Pack should be installed on and click **Next**.
6. Click **Next** on the **Upload** section once the Supplemental Pack has been uploaded to all the XenServer hosts.
7. Click **Next** on the **Prechecks** section.
8. Click **Install Update** on the **Update Mode** section.
9. Click **Finish** on the **Install Update** section.

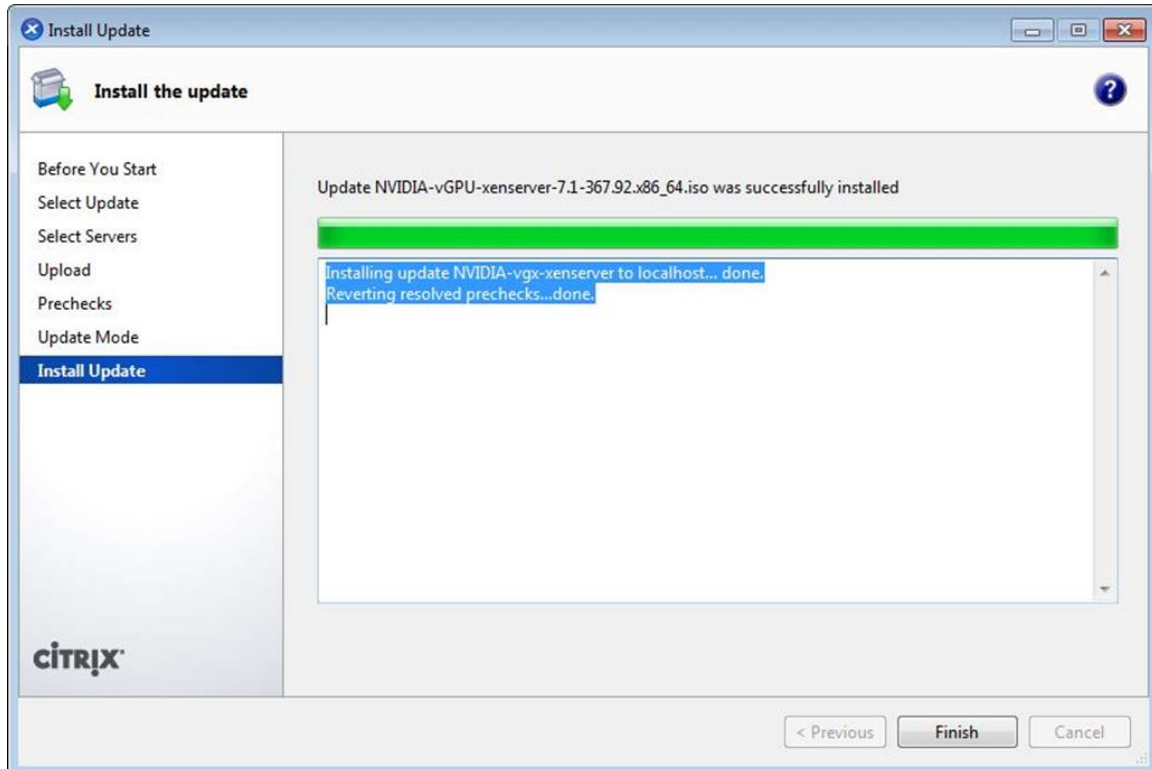


Figure 5 Successful installation of GRID vGPU Manager supplemental pack

2.1.4.4. Verifying the installation of the XenServer GRID package

After the XenServer platform has rebooted, verify the installation of the GRID package for XenServer by performing the following steps:

1. Verify that the GRID package installed and loaded correctly by checking for the NVIDIA kernel driver in the list of kernel loaded modules.

```
[root@xenserver ~]# lsmod | grep nvidia
nvidia          9522927  0
i2c_core        20294    2 nvidia,i2c_i801
[root@xenserver ~]#
```

2. Verify that the NVIDIA kernel driver can successfully communicate with the GRID physical GPUs in your system by running the `nvidia-smi` command. The `nvidia-smi` command is described in more detail in [NVIDIA System Management Interface `nvidia-smi`](#).

Running the `nvidia-smi` command should produce a listing of the GPUs in your platform.

```
[root@xenserver ~]# nvidia-smi
Fri Jun 16 18:46:50 2017
+-----+
| NVIDIA-SMI 367.106      Driver Version: 367.106      |
+-----+-----+-----+-----+
| GPU   Name                               | Bus-Id        | Disp. | Volatile Uncorr. ECC |
+-----+-----+-----+-----+
| 0     Tesla M10                        | 00000000:03:00.0 |      |          0           |
+-----+-----+-----+-----+
```

```

| Fan  Temp  Perf  Pwr:Usage/Cap| Memory-Usage          | GPU-Util  Compute M. |
|=====+=====+=====+=====+=====+=====+=====+=====+=====+=====|
|   0  GRID  K1              | 0000:04:00.0  Off |             N/A |
| N/A  27C   P0    13W / 31W | 0%   9MB / 4095MB | 0%         Default |
+-----+-----+-----+-----+-----+-----+-----+-----+-----+-----+
|   1  GRID  K1              | 0000:05:00.0  Off |             N/A |
| N/A  25C   P0    13W / 31W | 0%   9MB / 4095MB | 0%         Default |
+-----+-----+-----+-----+-----+-----+-----+-----+-----+-----+
|   2  GRID  K1              | 0000:06:00.0  Off |             N/A |
| N/A  21C   P0    13W / 31W | 0%   9MB / 4095MB | 0%         Default |
+-----+-----+-----+-----+-----+-----+-----+-----+-----+-----+
|   3  GRID  K1              | 0000:07:00.0  Off |             N/A |
| N/A  23C   P0    13W / 31W | 0%   9MB / 4095MB | 0%         Default |
+-----+-----+-----+-----+-----+-----+-----+-----+-----+-----+
|   4  GRID  K1              | 0000:86:00.0  Off |             N/A |
| N/A  24C   P0    13W / 31W | 0%   9MB / 4095MB | 0%         Default |
+-----+-----+-----+-----+-----+-----+-----+-----+-----+-----+
|   5  GRID  K1              | 0000:87:00.0  Off |             N/A |
| N/A  24C   P0    13W / 31W | 0%   9MB / 4095MB | 0%         Default |
+-----+-----+-----+-----+-----+-----+-----+-----+-----+-----+
|   6  GRID  K1              | 0000:88:00.0  Off |             N/A |
| N/A  25C   P0    13W / 31W | 0%   9MB / 4095MB | 0%         Default |
+-----+-----+-----+-----+-----+-----+-----+-----+-----+-----+
|   7  GRID  K1              | 0000:89:00.0  Off |             N/A |
| N/A  25C   P0    12W / 31W | 0%   9MB / 4095MB | 0%         Default |
+-----+-----+-----+-----+-----+-----+-----+-----+-----+-----+
| Compute processes:                GPU Memory |
| GPU      PID  Process name                Usage      |
|=====+=====+=====+=====+=====+=====+=====+=====+=====+=====|
| No running compute processes found |
+-----+-----+-----+-----+-----+-----+-----+-----+-----+-----+
[root@xenserver ~]#

```

If `nvidia-smi` fails to run or doesn't produce the expected output for all the NVIDIA GPUs in your system, see [Troubleshooting](#) for troubleshooting steps.

2.1.5. Configuring a XenServer VM with Virtual GPU

XenServer supports configuration and management of virtual GPUs using XenCenter, or the `xe` command line tool that is run in a XenServer dom0 shell. Basic configuration using XenCenter is described in the following sections. Command line management using `xe` is described in [XenServer vGPU Management](#).

To configure a XenServer VM to use virtual GPU, follow these steps:

1. Ensure the VM is powered off.
2. Right-click on the VM in XenCenter, select **Properties** to open the VM's properties, and select the **GPU** property.

The available GPU types are listed in the GPU type dropdown:

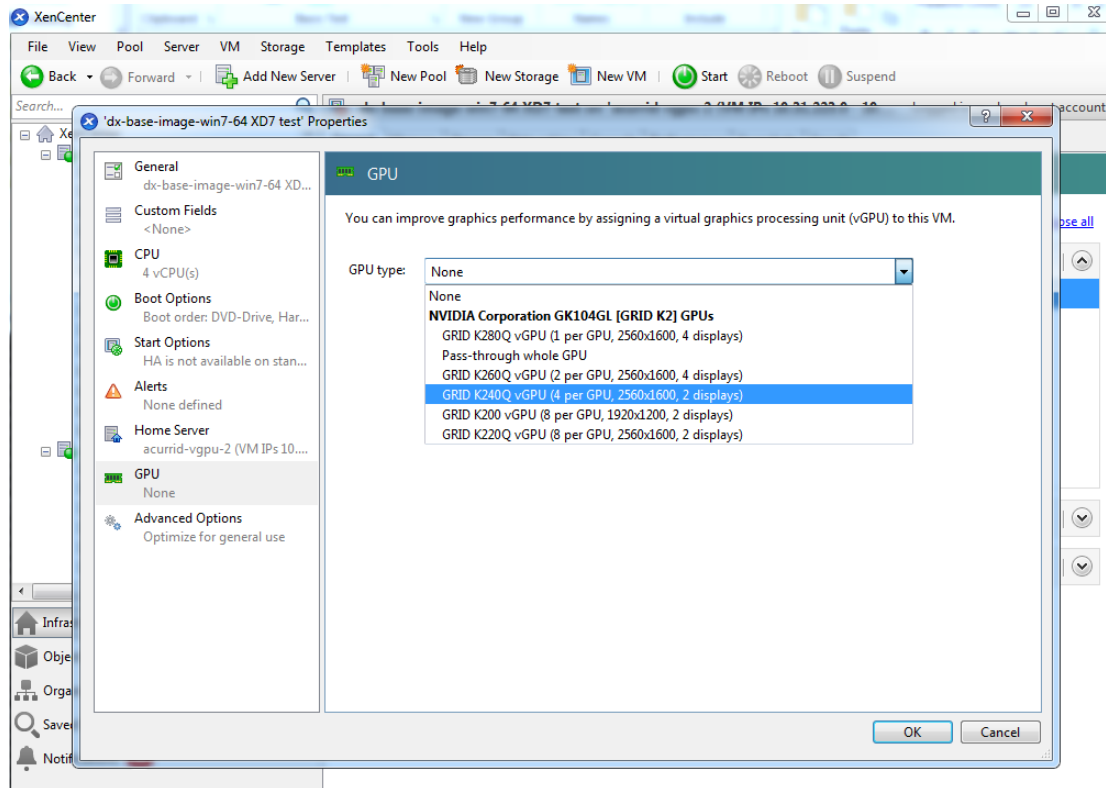


Figure 6 Using XenCenter to configure a VM with a vGPU

2.1.6. Booting the XenServer VM and Installing Drivers

Once you have configured a XenServer VM with a vGPU, start the VM, either from XenCenter or by using `xe vm-start` in a `dom0` shell.

Viewing the VM's console in XenCenter, the VM should boot to a standard Windows desktop in VGA mode at 800×600 resolution. The Windows screen resolution control panel may be used to increase the resolution to other standard resolutions, but to fully enable vGPU operation, as for a physical NVIDIA GPU, the NVIDIA driver must be installed.

1. Copy the 32-bit or 64-bit NVIDIA Windows driver package to the guest VM and execute it to unpack and run the driver installer:

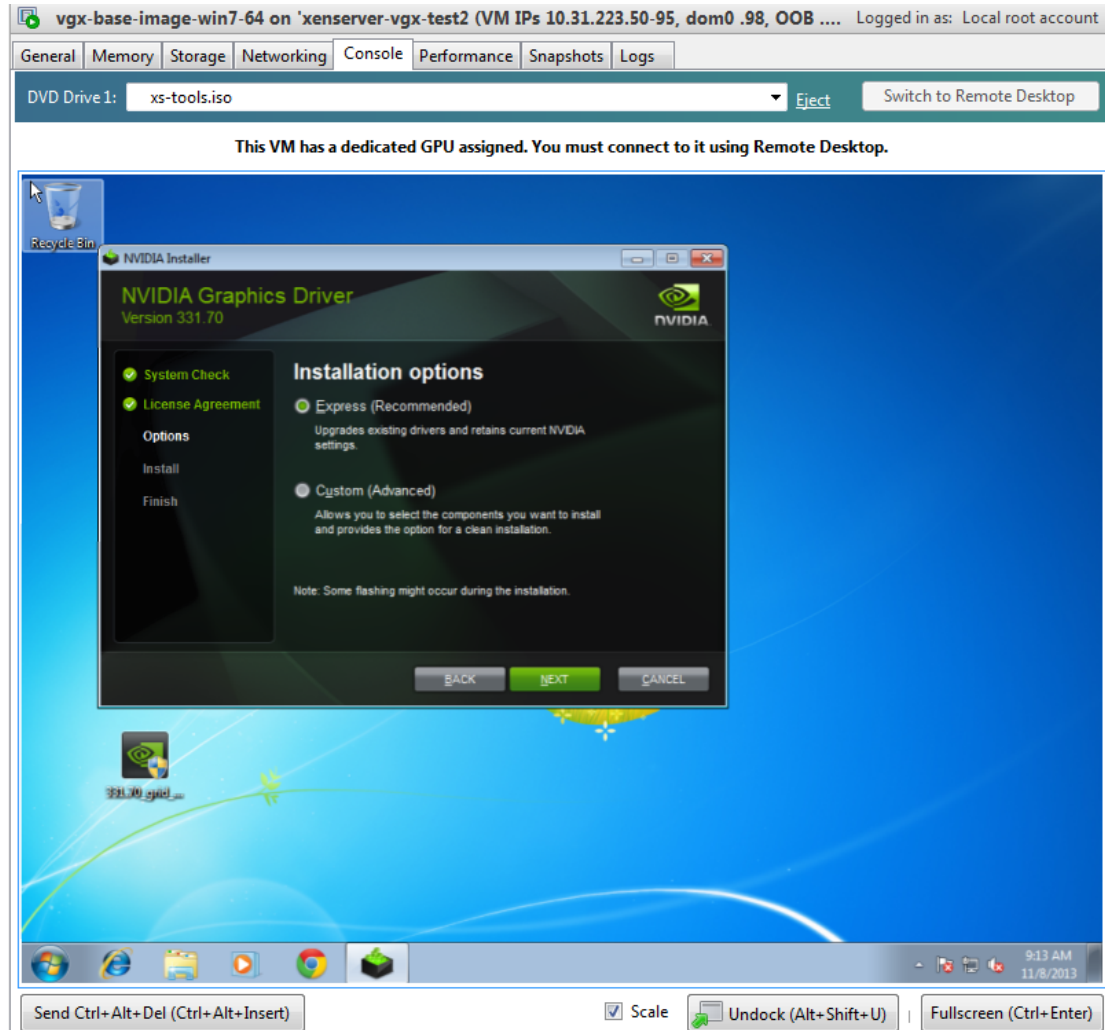


Figure 7 NVIDIA driver installation in the guest VM

2. Click through the license agreement.
3. Select **Express Installation**.
Once driver installation completes, the installer may prompt you to restart the platform.
4. If prompted to restart the platform, do one of the following:
 - ▶ Select **Restart Now** to reboot the VM.
 - ▶ Exit the installer and reboot the VM when ready.

Once the VM restarts, it will boot to a Windows desktop.
5. Verify that the NVIDIA driver is running:
 - a) Right-click on the desktop.
The **NVIDIA Control Panel** will be listed in the menu.
 - b) Select the **NVIDIA Control Panel** to open it.
 - c) Select **System Information** in the **NVIDIA Control Panel** to report the Virtual GPU that the VM is using, its capabilities, and the NVIDIA driver version that is loaded.

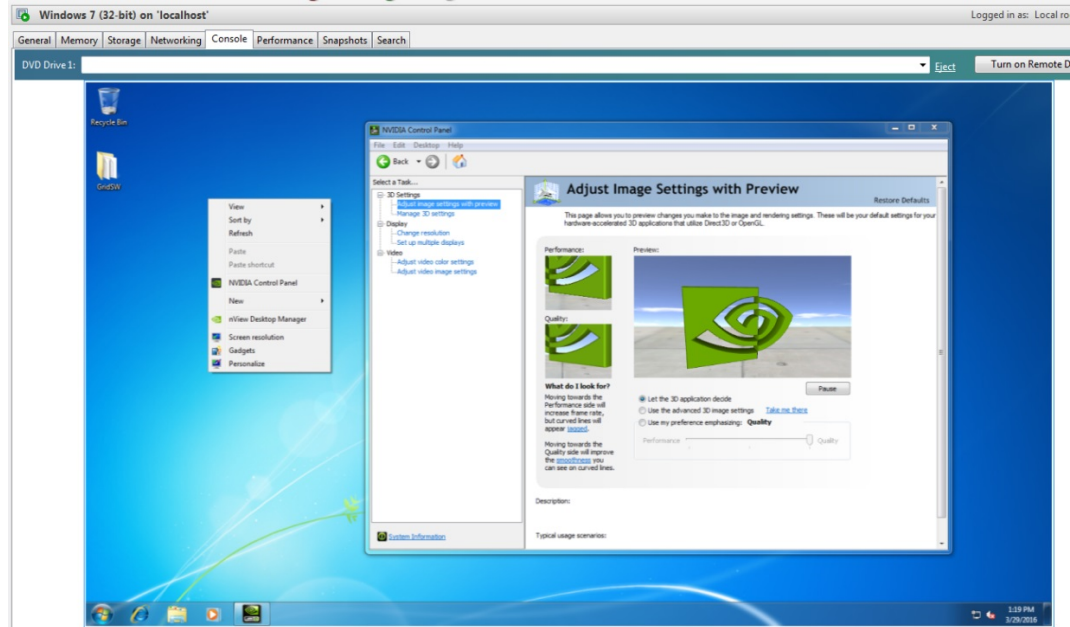


Figure 8 Verifying NVIDIA driver operation using NVIDIA Control Panel

This task completes the process of setting up a single XenServer VM to use GRID vGPU. The VM is now capable of running the full range of DirectX and OpenGL graphics applications.

2.1.7. Applying a vGPU license

GRID vGPU is a licensed feature on Tesla M6, Tesla M10, and Tesla M60. When booted on these GPUs, a vGPU runs at full capability even without a license. However, until a license is acquired, users are warned each time a vGPU tries and fails to obtain a license. You may optionally configure a license server to provide licenses to a vGPU. See [Licensing vGPU on Windows](#) for details on how to configure licensing on Windows.

2.1.8. Removing a XenServer VM's vGPU configuration

You can remove a virtual GPU assignment from a VM, such that it no longer uses a virtual GPU, by using either XenCenter or the `xe` command.



The VM must be in the powered-off state in order for its vGPU configuration to be modified or removed.

2.1.8.1. Removing a VM's vGPU configuration by using XenCenter

1. Set the **GPU type** to **None** in the VM's **GPU Properties**, as shown in [Figure 9](#).

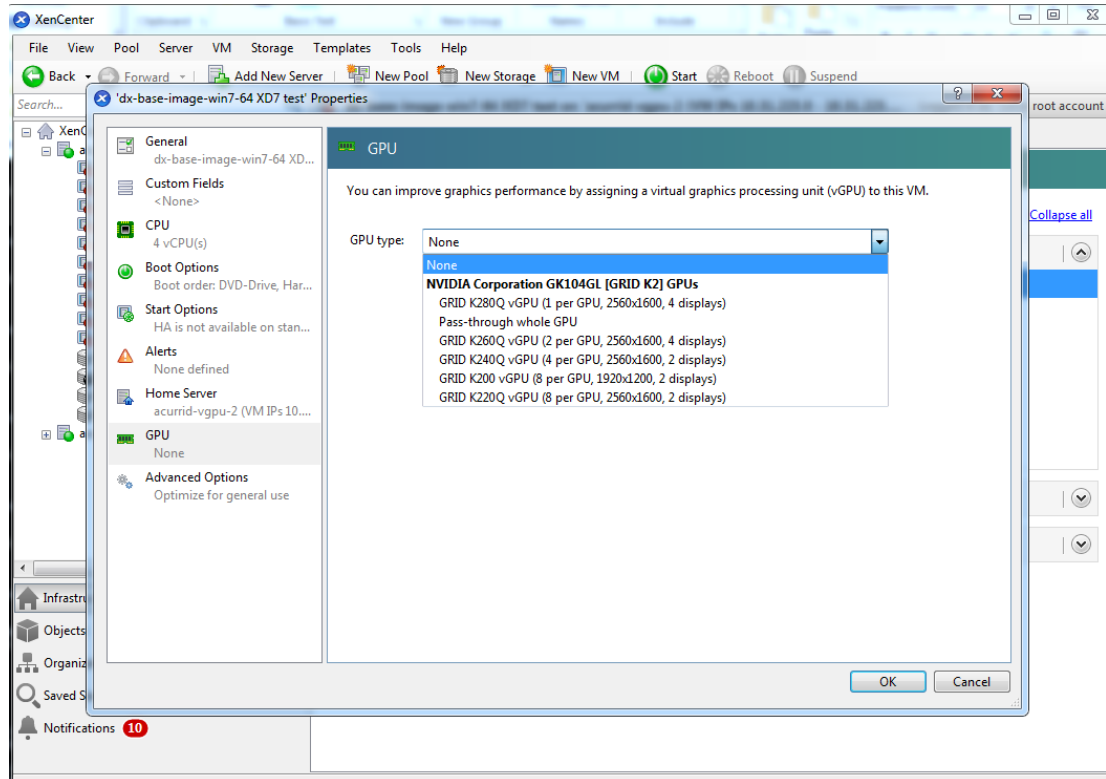


Figure 9 Using XenCenter to remove a vGPU configuration from a VM

2. Click OK.

2.1.8.2. Removing a VM's vGPU configuration by using `xe`

1. Use `vgpu-list` to discover the vGPU object UUID associated with a given VM:

```
[root@xenserver ~]# xe vgpu-list vm-uuid=e71afda4-53f4-3a1b-6c92-a364a7f619c2
uuid ( RO)                : c1c7c43d-4c99-af76-5051-119f1c2b4188
      vm-uuid ( RO)       : e71afda4-53f4-3a1b-6c92-a364a7f619c2
      gpu-group-uuid ( RO) : d53526a9-3656-5c88-890b-5b24144c3d96
```

2. Use `vgpu-destroy` to delete the virtual GPU object associated with the VM:

```
[root@xenserver ~]# xe vgpu-destroy uuid=c1c7c43d-4c99-af76-5051-119f1c2b4188
[root@xenserver ~]#
```

2.2. VMware vSphere

The following topics step you through the process of setting up a single VMware vSphere VM to use GRID vGPU. After the process is complete, the VM is capable of running the full range of DirectX and OpenGL graphics applications.

2.2.1. Prerequisites for using VMware vSphere with GRID vGPU

Before proceeding, ensure that you have these prerequisites:

- ▶ NVIDIA GRID K1,K2, or Tesla M60, M10, M6 cards.
- ▶ A server platform capable of hosting VMware vSphere Hypervisor (ESXi) and the NVIDIA GRID or Tesla cards. Refer to the release notes for a list of recommended servers.
- ▶ The NVIDIA GRID vGPU software package for VMware vSphere, consisting of the GRID Virtual GPU Manager for ESXi, and NVIDIA GRID vGPU drivers for Windows, 32- and 64-bit.
- ▶ VMware vSphere 2015 or later, obtainable from VMware.
- ▶ An installed Windows VM to be enabled with vGPU.

To run VMware Horizon with virtual machines running NVIDIA Virtual GPU, you will also need:

- ▶ VMware Horizon 6.1 or later, obtainable from VMware.



Earlier versions of VMware vSphere and Horizon are not supported for use with NVIDIA Virtual GPU.

Review the release notes and known issues for GRID Virtual GPU before proceeding with installation.

2.2.2. Installing VMware vSphere

Install these VMware software products, following VMware's installation instructions:

- ▶ VMware vSphere Hypervisor (ESXi)
- ▶ VMware vCenter Server



Ensure that the ESXi host on which you will install the NVIDIA GRID Virtual GPU Manager for vSphere is not a member of a VMware Distributed Resource Scheduler (DRS) cluster.

2.2.3. Changing the Mode of a Tesla M60 or M6 GPU

Tesla M60 and M6 GPUs support compute mode and graphics mode. GRID vGPU requires GPUs that support both modes to operate in graphics mode.

Recent Tesla M60 GPUs and M6 GPUs are supplied in graphics mode. However, your GPU might be in compute mode if it is an older Tesla M60 GPU or M6 GPU, or if its mode has previously been changed.

If your GPU supports both modes but is in compute mode, you must use the `gpumodeswitch` tool to change the mode of the GPU to graphics mode. If you are unsure which mode your GPU is in, use the `gpumodeswitch` tool to find out the mode.

For more information, see *gpumodeswitch User Guide*.

2.2.4. Installing and Updating the NVIDIA Virtual GPU Manager for vSphere

The NVIDIA Virtual GPU Manager runs on ESXi host. It is provided as a VIB file, which must be copied to the ESXi host and then installed.

2.2.4.1. Installing the NVIDIA Virtual GPU Manager Package for vSphere

To install the vGPU Manager VIB you need to access the ESXi host via the ESXi Shell or SSH. Refer to VMware's documentation on how to enable ESXi Shell or SSH for an ESXi host.



Before proceeding with the vGPU Manager installation make sure that all VMs are powered off and the ESXi host is placed in maintenance mode. Refer to VMware's documentation on how to place an ESXi host in maintenance mode.

1. Use the `esxcli` command to install the vGPU Manager package:

```
[root@esxi:~] esxcli software vib install -v directory/NVIDIA-vGPU-VMware_ESXi_6.0_Host_Driver_367.106-1OEM.600.0.0.2159203.vib
Installation Result
  Message: Operation finished successfully.
  Reboot Required: false
  VIBs Installed: NVIDIA-vGPU-VMware_ESXi_6.0_Host_Driver_367.106-1OEM.600.0.0.2159203
  VIBs Removed:
  VIBs Skipped:
```

directory is the path to the directory that contains the VIB file.

2. Reboot the ESXi host and remove it from maintenance mode.



Caution GRID Virtual GPU Manager and Guest VM drivers must be matched from the same release. After updating vGPU Manager, guest VMs will boot with vGPU disabled until their guest vGPU driver is updated to match the vGPU Manager version. Consult the release notes for further details.

2.2.4.2. Updating the NVIDIA Virtual GPU Manager Package for vSphere

Update the vGPU Manager VIB package if you want to install a new version of GRID Virtual GPU Manager on a system where an existing version is already installed.

To update the vGPU Manager VIB you need to access the ESXi host via the ESXi Shell or SSH. Refer to VMware's documentation on how to enable ESXi Shell or SSH for an ESXi host.



Before proceeding with the vGPU Manager update, make sure that all VMs are powered off and the ESXi host is placed in maintenance mode. Refer to VMware's documentation on how to place an ESXi host in maintenance mode

1. Use the `esxcli` command to update the vGPU Manager package:

```
[root@esxi:~] esxcli software vib update -v directory/NVIDIA-vGPU-VMware_ESXi_6.0_Host_Driver_367.106-1OEM.600.0.0.2159203.vib

Installation Result
  Message: Operation finished successfully.
  Reboot Required: false
  VIBs Installed: NVIDIA-vGPU-VMware_ESXi_6.0_Host_Driver_367.106-1OEM.600.0.0.2159203
  VIBs Removed: NVIDIA-vGPU-VMware_ESXi_6.0_Host_Driver_367.92-1OEM.600.0.0.2159203
  VIBs Skipped:
```

directory is the path to the directory that contains the VIB file.

2. Reboot the ESXi host and remove it from maintenance mode.



Caution GRID Virtual GPU Manager and Guest VM drivers must be matched from the same release. After updating vGPU Manager, guest VMs will boot with vGPU disabled until their guest vGPU driver is updated to match the vGPU Manager version. Consult the release notes for further details.

2.2.4.3. Verifying the installation of the vSphere GRID package

After the ESXi host has rebooted, verify the installation of the GRID package for vSphere by performing the following steps:

1. Verify that the GRID package installed and loaded correctly by checking for the NVIDIA kernel driver in the list of kernel loaded modules.

```
[root@esxi:~] vmkload_mod -l | grep nvidia
nvidia          5      8420
```

2. If the NVIDIA driver is not listed in the output, check `dmesg` for any load-time errors reported by the driver.
3. Verify that the NVIDIA kernel driver can successfully communicate with the GRID physical GPUs in your system by running the `nvidia-smi` command. The `nvidia-smi` command is described in more detail in [NVIDIA System Management Interface `nvidia-smi`](#).

Running the `nvidia-smi` command should produce a listing of the GPUs in your platform.

```
[root@esxi:~] nvidia-smi
```

```

Fri Jun 16 17:56:22 2017
+-----+
| NVIDIA-SMI 367.106      Driver Version: 367.106      |
+-----+
| GPU  Name          Persistence-M| Bus-Id        Disp.A | Volatile Uncorr. ECC |
| Fan  Temp   Perf   Pwr:Usage/Cap|      Memory-Usage | GPU-Util  Compute M. |
+-----+-----+
|  0   GRID K2           On         | 0000:04:00.0  Off   |         Off         |
| N/A   27C    P8      27W / 117W | 11MiB / 4095MiB |    0%      Default   |
+-----+-----+
|  1   GRID K2           On         | 0000:05:00.0  Off   |         Off         |
| N/A   27C    P8      27W / 117W | 10MiB / 4095MiB |    0%      Default   |
+-----+-----+
|  2   GRID K2           On         | 0000:08:00.0  Off   |         Off         |
| N/A   32C    P8      27W / 117W | 10MiB / 4095MiB |    0%      Default   |
+-----+-----+
|  3   GRID K2           On         | 0000:09:00.0  Off   |         Off         |
| N/A   32C    P8      27W / 117W | 10MiB / 4095MiB |    0%      Default   |
+-----+-----+
|  4   GRID K2           On         | 0000:86:00.0  Off   |         Off         |
| N/A   24C    P8      27W / 117W | 10MiB / 4095MiB |    0%      Default   |
+-----+-----+

+-----+
| Processes:                                     GPU Memory |
| GPU      PID  Type  Process name                               Usage      |
+-----+-----+
| No running processes found                    |
+-----+

```

If `nvidia-smi` fails to report the expected output for all the NVIDIA GPUs in your system, see [Troubleshooting](#) for troubleshooting steps.

2.2.5. Changing the Default Graphics Type in VMware vSphere 6.5

The vGPU Manager VIB provides vSGA and vGPU functionality in a single VIB. After this VIB is installed, the default graphics type is Shared, which provides vSGA functionality. To enable vGPU support for VMs in VMware vSphere 6.5, you must change the default graphics type to Shared Direct. If you do not change the default graphics type, VMs to which a vGPU is assigned fail to start and the following error message is displayed:

```
The amount of graphics resource available in the parent resource pool is
insufficient for the operation.
```



If you are using a supported version of VMware vSphere earlier than 6.5, omit this task.

Change the default graphics type **before** configuring vGPU. Output from the VM console in the VMware vSphere Web Client is not available for VMs that are running vGPU.

Before changing the default graphics type, ensure that the ESXi host is running and that all VMs on the host are powered off.

1. Log in to vCenter Server by using the vSphere Web Client.
2. In the navigation tree, select your ESXi host and click the **Configure** tab.
3. From the menu, choose **Graphics** and then click the **Host Graphics** tab.
4. On the **Host Graphics** tab, click **Edit**.

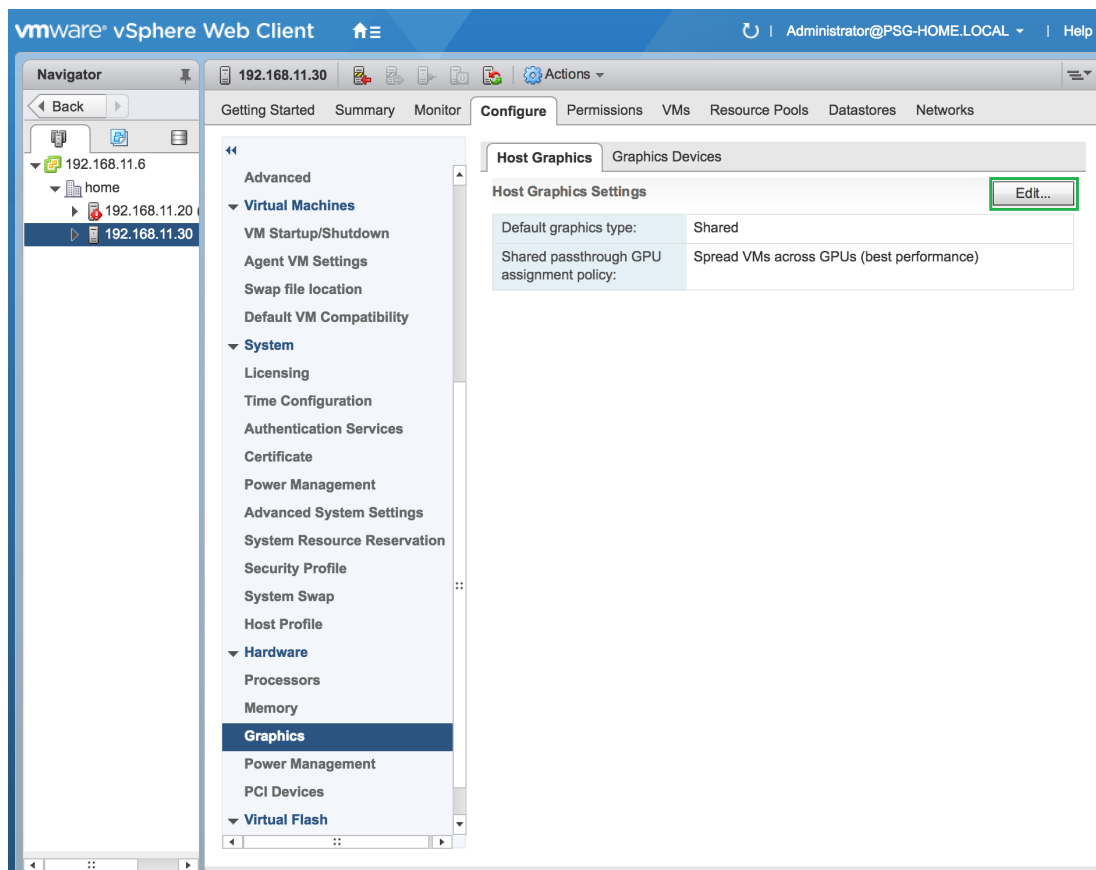


Figure 10 Shared default graphics type

5. In the **Edit Host Graphics Settings** dialog box that opens, select **Shared Direct** and click **OK**.

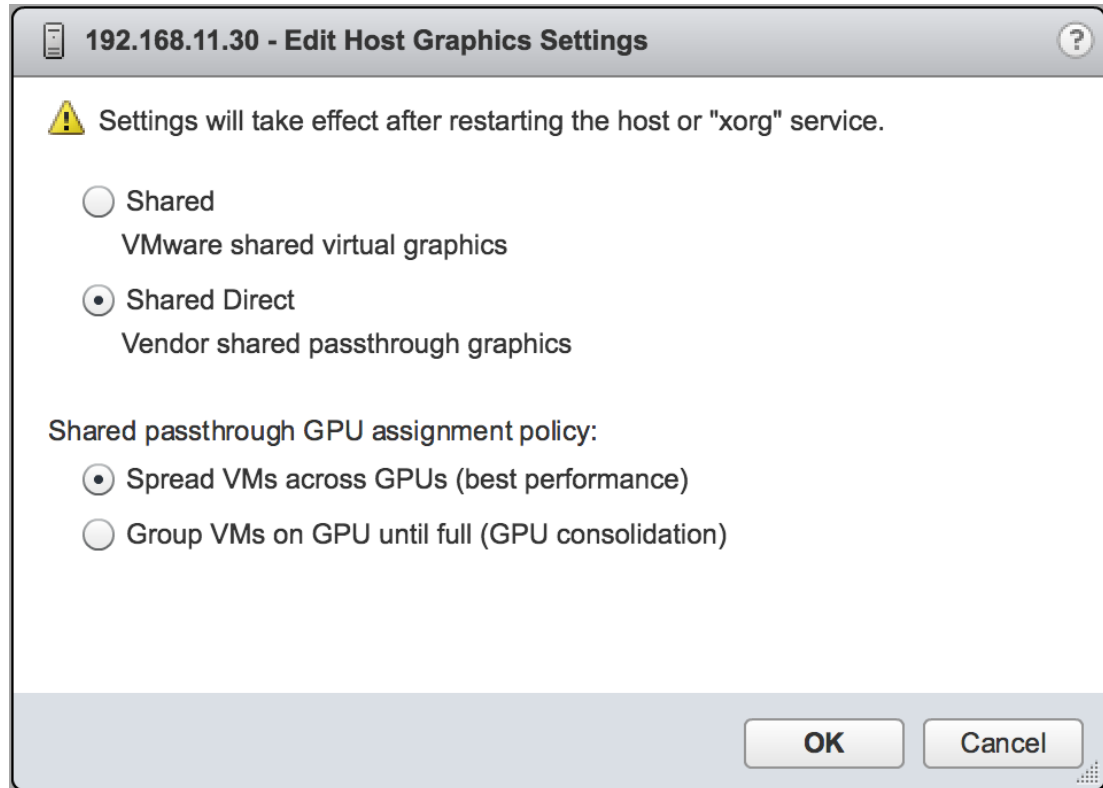



Figure 11 Host graphics settings for vGPU

 In this dialog box, you can also change the allocation scheme for vGPU-enabled VMs. For more information, see [Modifying GPU Assignment for vGPU-Enabled VMs](#).

After you click OK, the default graphics type changes to Shared Direct.


6. Restart the ESXi host or the Xorg service on the host.

After changing the default graphics type, configure vGPU as explained in [Configuring a vSphere VM with Virtual GPU](#).

See also the following topics in the VMware vSphere documentation:

- ▶ [Log in to vCenter Server by Using the vSphere Web Client](#)
- ▶ [Configuring Host Graphics](#)

2.2.6. Configuring a vSphere VM with Virtual GPU

 **Caution** Output from the VM console in the VMware vSphere Web Client is not available for VMs that are running vGPU. Make sure that you have installed an alternate means of accessing the VM (such as VMware Horizon or a VNC server) before you configure vGPU.

VM console in vSphere Web Client will become active again once the vGPU parameters are removed from the VM's configuration.

To configure vGPU for a VM:

1. Select **Edit Settings** after right-clicking on the VM in the vCenter Web UI.
2. Select the **Virtual Hardware** tab.
3. In the **New device** list, select **Shared PCI Device** and click **Add**.

The **PCI device** field should be auto-populated with **NVIDIA GRID vGPU**, as shown in [Figure 12](#).

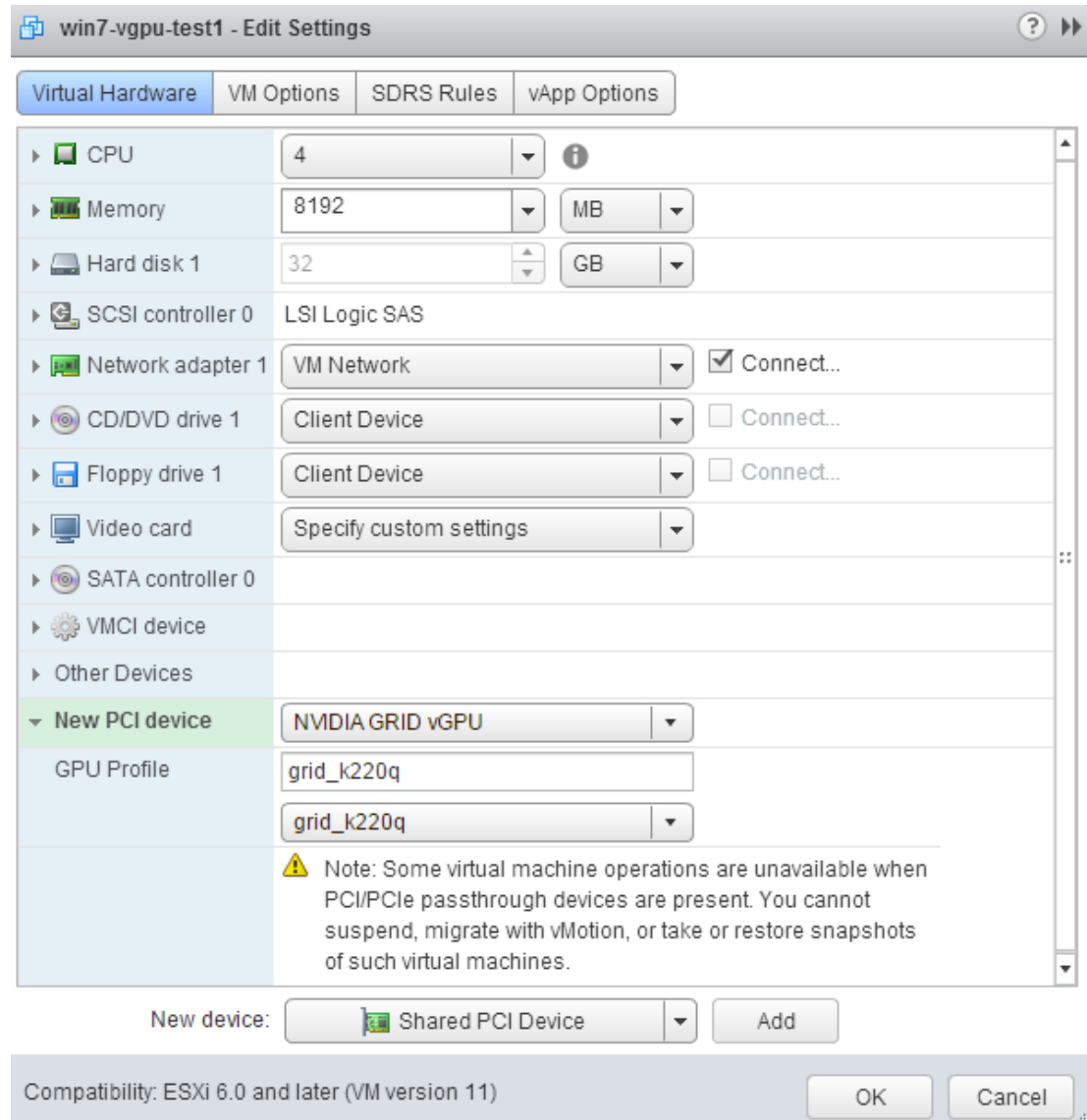


Figure 12 VM settings for vGPU

4. From the **GPU Profile** dropdown menu, choose the type of vGPU you want to configure.
5. Ensure that VMs running vGPU have all their memory reserved:

- a) Select **Edit virtual machine settings** from the vCenter Web UI.
- b) Expand the **Memory** section and click **Reserve all guest memory (All locked)**.

2.2.7. Booting the vSphere VM and Installing Drivers

Once you have configured a vSphere VM with a vGPU, start the VM. VM console in vSphere Web Client is not supported in this vGPU release. Therefore, use VMware Horizon or VNC to access the VM's desktop.

The VM should boot to a standard Windows desktop in VGA mode at 800×600 resolution. The Windows screen resolution control panel may be used to increase the resolution to other standard resolutions, but to fully enable vGPU operation, as for a physical NVIDIA GPU, the NVIDIA driver must be installed.

1. Copy the 32-bit or 64-bit NVIDIA Windows driver package to the guest VM and execute it to unpack and run the driver installer.
2. Click through the license agreement.
3. Select **Express Installation**.
Once driver installation completes, the installer may prompt you to restart the platform.
4. If prompted to restart the platform, do one of the following:
 - ▶ Select **Restart Now** to reboot the VM.
 - ▶ Exit the installer and reboot the VM when ready.

Once the VM restarts, it will boot to a Windows desktop.

5. Verify that the NVIDIA driver is running:
 - a) Right-click on the desktop.
The **NVIDIA Control Panel** will be listed in the menu.
 - b) Select the **NVIDIA Control Panel** to open it.
 - c) Select **System Information** in the **NVIDIA Control Panel** to report the Virtual GPU that the VM is using, its capabilities, and the NVIDIA driver version that is loaded.

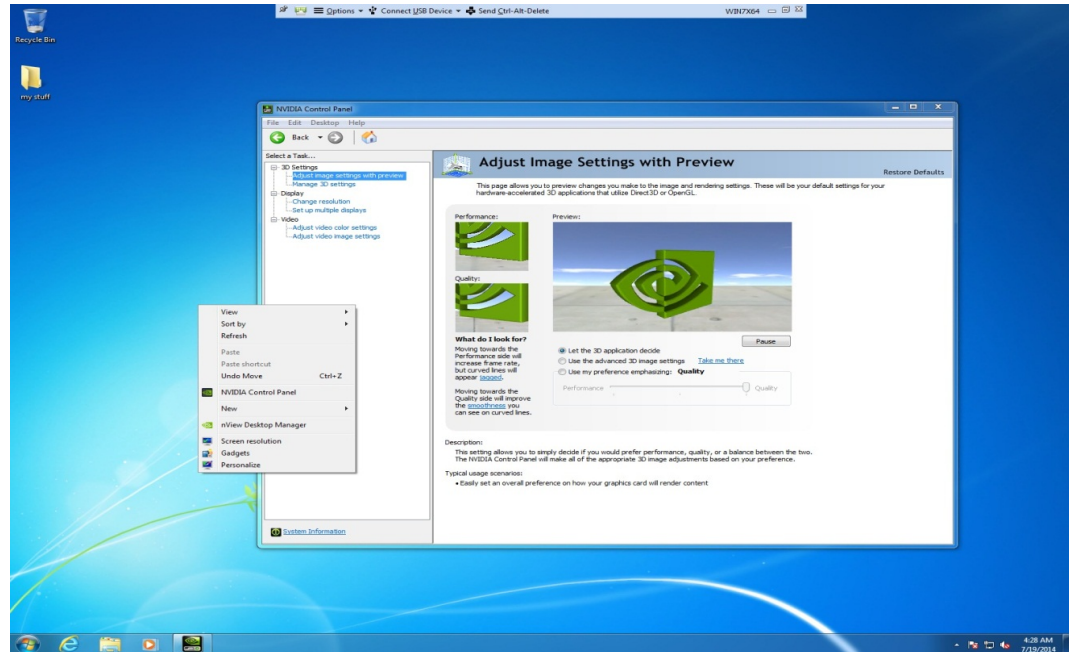


Figure 13 Verifying NVIDIA driver operation using NVIDIA Control Panel

This task completes the process of setting up a single vSphere VM to use GRID vGPU. The VM is now capable of running the full range of DirectX and OpenGL graphics applications.

2.2.8. Applying a vGPU license

GRID vGPU is a licensed feature on Tesla M6, Tesla M10, and Tesla M60. When booted on these GPUs, a vGPU runs at full capability even without a license. However, until a license is acquired, users are warned each time a vGPU tries and fails to obtain a license. You may optionally configure a license server to provide licenses to a vGPU. See [Licensing vGPU on Windows](#) for details on how to configure licensing on Windows.

2.2.9. Removing a vSphere VM's vGPU configuration

To remove a vSphere vGPU configuration from a VM:

1. Select **Edit settings** after right-clicking on the VM in the vCenter Web UI.
2. Select the **Virtual Hardware** tab.
3. Mouse over the **PCI Device** entry showing **NVIDIA GRID vGPU** and click on the **(X)** icon to mark the device for removal.
4. Click **OK** to remove the device and update the VM settings.

2.2.10. Modifying GPU Assignment for vGPU-Enabled VMs

VMware vSphere Hypervisor (ESXi) by default uses a *breadth-first* allocation scheme for vGPU-enabled VMs; allocating new vGPU-enabled VMs on an available, least loaded physical GPU. This policy generally leads to higher performance because it attempts to minimize sharing of physical GPUs, but in doing so it may artificially limit the total number of vGPUs that can run.

ESXi also provides a *depth-first* allocation scheme for vGPU-enabled VMs. The depth-first allocation policy attempts to maximize the number of vGPUs running on each physical GPU, by placing newly-created vGPUs on the physical GPU that can support the new vGPU and that has the most number of vGPUs already resident. This policy generally leads to higher density of vGPUs, particularly when different types of vGPUs are being run, but may result in lower performance because it attempts to maximize sharing of physical GPUs.

How to switch to a depth-first allocation scheme depends on the version of VMware vSphere that you are using.

- ▶ Supported versions earlier than 6.5: Add the following parameter to `/etc/vmware/config`:

```
vGPU.consolidation = true
```
- ▶ Version 6.5: Use the vSphere Web Client.

Before using the vSphere Web Client to change the allocation scheme, ensure that the ESXi host is running and that all VMs on the host are powered off.

1. Log in to vCenter Server by using the vSphere Web Client.
2. In the navigation tree, select your ESXi host and click the **Configure** tab.
3. From the menu, choose **Graphics** and then click the **Host Graphics** tab.
4. On the **Host Graphics** tab, click **Edit**.

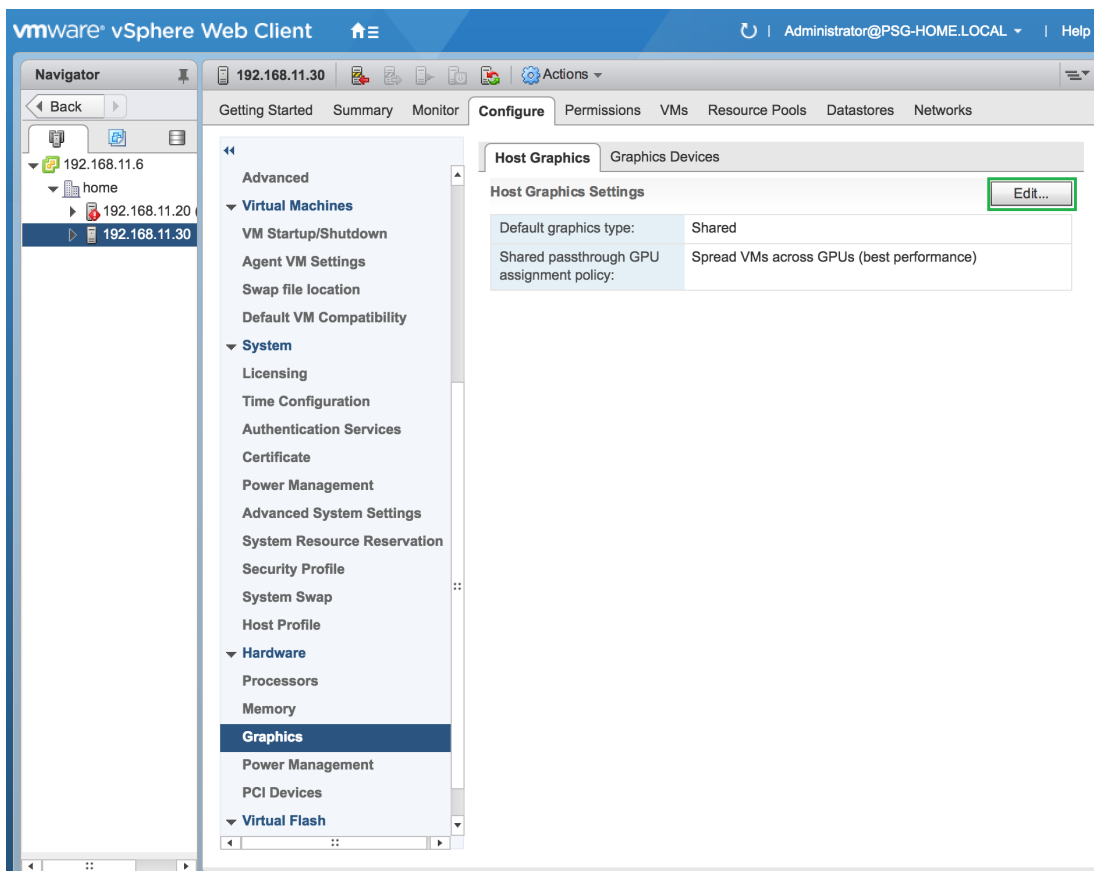


Figure 14 Breadth-first allocation scheme setting for vGPU-enabled VMs

5. In the **Edit Host Graphics Settings** dialog box that opens, select these options and click **OK**.
 - a) If not already selected, select **Shared Direct**.
 - b) Select **Group VMs on GPU until full**.

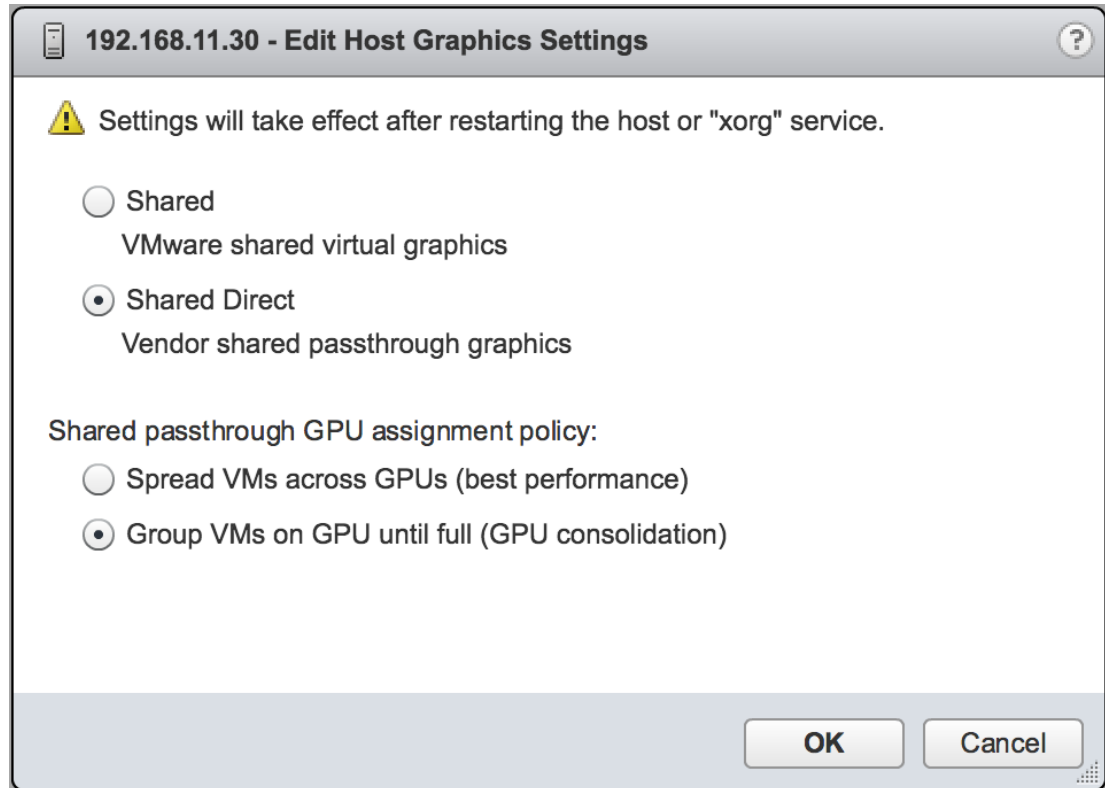


Figure 15 Host graphics settings for vGPU

After you click OK, the default graphics type changes to Shared Direct and the allocation scheme for vGPU-enabled VMs is breadth-first.

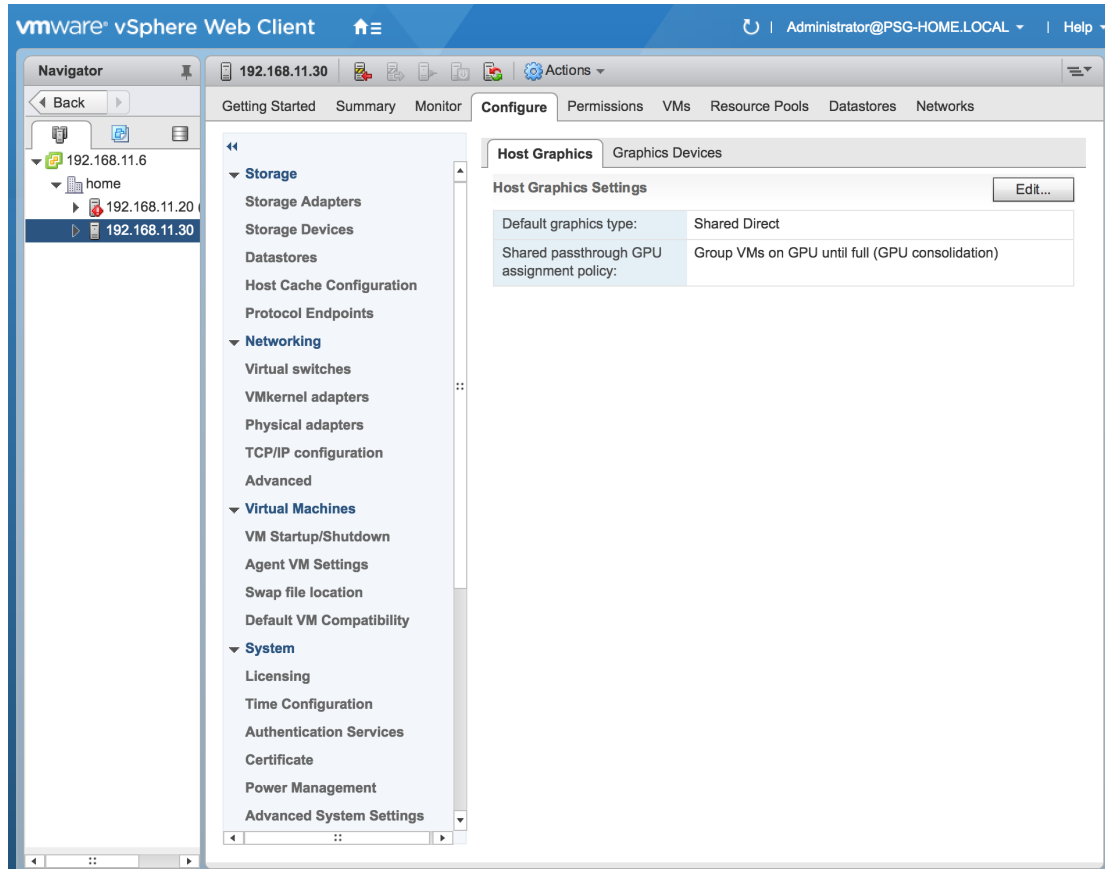


Figure 16 Depth-first allocation scheme setting for vGPU-enabled VMs

6. Restart the ESXi host or the Xorg service on the host.

See also the following topics in the VMware vSphere documentation:

- ▶ [Log in to vCenter Server by Using the vSphere Web Client](#)
- ▶ [Configuring Host Graphics](#)

2.3. Licensing vGPU on Windows

GRID vGPU is a licensed feature on Tesla M6, Tesla M10, and Tesla M60 GPUs. When booted on these GPUs, a vGPU runs at full capability even without a license. However, until a license is acquired, users are warned each time a vGPU tries and fails to obtain a license. These warnings cease after a license is acquired.

Full information on configuring and using GRID licensed features, including vGPU, is given in *GRID Licensing User Guide*. Basic configuration information is given here.

To configure vGPU licensing on Windows:

1. Open **NVIDIA Control Panel** and select the **Manage License** task in the **Licensing** section of the navigation pane.
2. Enter the address of your local GRID License Server in the **License Server** field.
The address can be a fully-qualified domain name such as `gridlicense.example.com`, or an IP address such as `10.31.20.45`.
3. Leave the **Port Number** field unset.
It will default to `7070`, which is the default port number used by NVIDIA GRID License Server.
4. Click **Apply** to assign the settings.
The system will request the appropriate license for the current vGPU from the configured license server.

If the system fails to obtain a license, refer to *GRID Licensing User Guide* for guidance on troubleshooting.

Chapter 3.

USING vGPU ON LINUX

Tesla M6, Tesla M10, and Tesla M60 GPUs support vGPU on Linux VMs. 64-bit Linux guest VMs are supported on the following virtual GPU types:

Table 7 Virtual GPUs supporting Linux

Tesla M60	Tesla M10	Tesla M6
M60-8Q	M10-8Q	M6-8Q
M60-4Q	M10-4Q	M6-4Q
M60-2Q	M10-2Q	M6-2Q
M60-1Q	M10-1Q	M6-1Q
M60-0Q	M10-0Q	M6-0Q



Refer to the driver release notes for further information on supported hypervisor and Linux VM configurations.

3.1. Installing vGPU drivers on Linux

After creating and booting a Linux VM on the hypervisor, the steps to install NVIDIA Linux vGPU drivers are largely the same as those for installing NVIDIA GPU drivers on a VM running pass-through GPU, or on bare-metal Linux.

3.1.1. Prerequisites for installing the NVIDIA Linux driver

Installation of the NVIDIA Linux driver requires:

- ▶ Compiler toolchain
- ▶ Kernel headers

3.1.2. Running the driver installer

1. Copy the NVIDIA GRID Linux driver package, for example `NVIDIA-Linux_x86_64-352.47-grid.run`, to the Linux VM.
2. Before attempting to run the driver installer, exit the X server and terminate all OpenGL applications.
 - ▶ On Red Hat Enterprise Linux and CentOS systems, exit the X server by transitioning to runlevel 3:

```
[nvidia@localhost ~]$ sudo init 3
```

- ▶ On Ubuntu platforms, do the following:

1. Use **CTRL-ALT-F1** to switch to a console login prompt.
2. Log in and shut down the display manager:

```
[nvidia@localhost ~]$ sudo service lightdm stop
```

3. From a console shell, run the driver installer as the root user.

```
sudo sh ./ NVIDIA-Linux_x86_64-352.47-grid.run
```

The installer should launch and display the driver license agreement as shown in Figure 17:

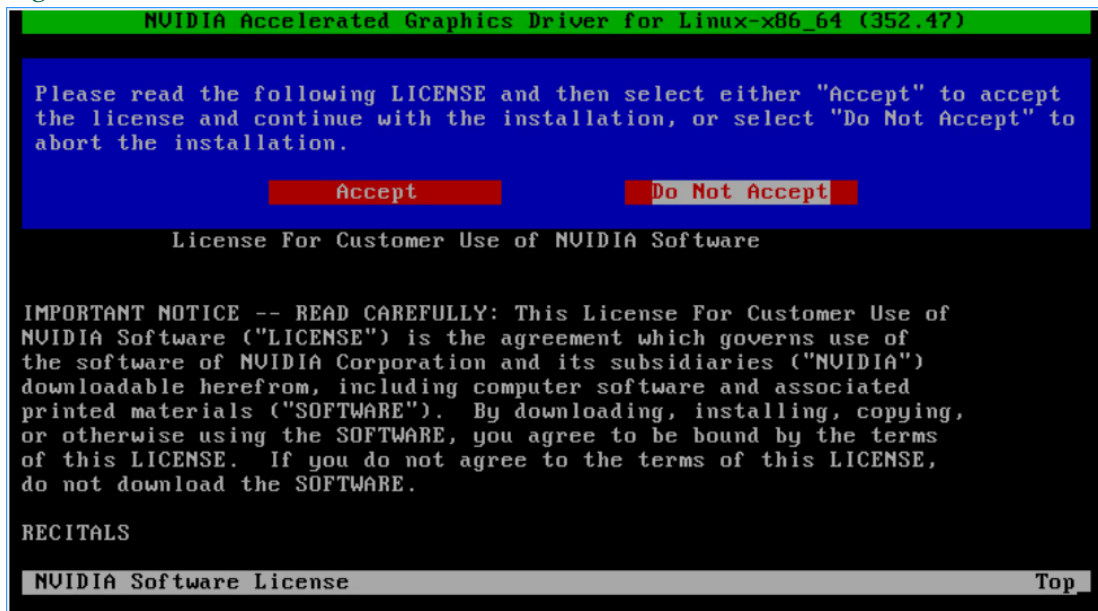


Figure 17 NVIDIA Linux driver installer

4. Accept the license agreement to continue with the driver installation. In some instances the installer may fail to detect the installed kernel headers and sources. In this situation, re-run the installer, specifying the kernel source path with the `--kernel-source-path` option:

```
sudo sh ./ NVIDIA-Linux_x86_64-352.47-grid.run \
--kernel-source-path=/usr/src/kernels/3.10.0-229.11.1.el7.x86_64
```

- When prompted, accept the option to update the X configuration file (`xorg.conf`) settings as shown in [Figure 18](#):

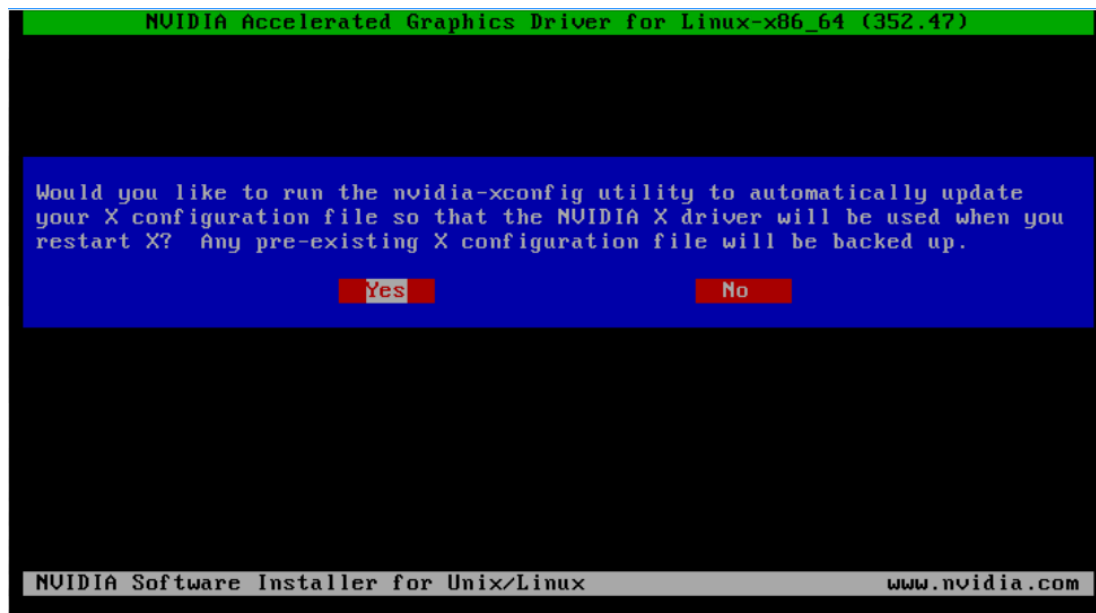


Figure 18 Update `xorg.conf` settings

- Once installation has completed, select **OK** to exit the installer.
- Verify that the NVIDIA driver is operational with vGPU:
 - Reboot the system and log in.
 - Run `nvidia-settings`.

```
[nvidia@localhost ~]$ nvidia-settings
```

The **NVIDIA X Server Settings** dialog box opens to show that the NVIDIA driver is operational as shown in [Figure 19](#).

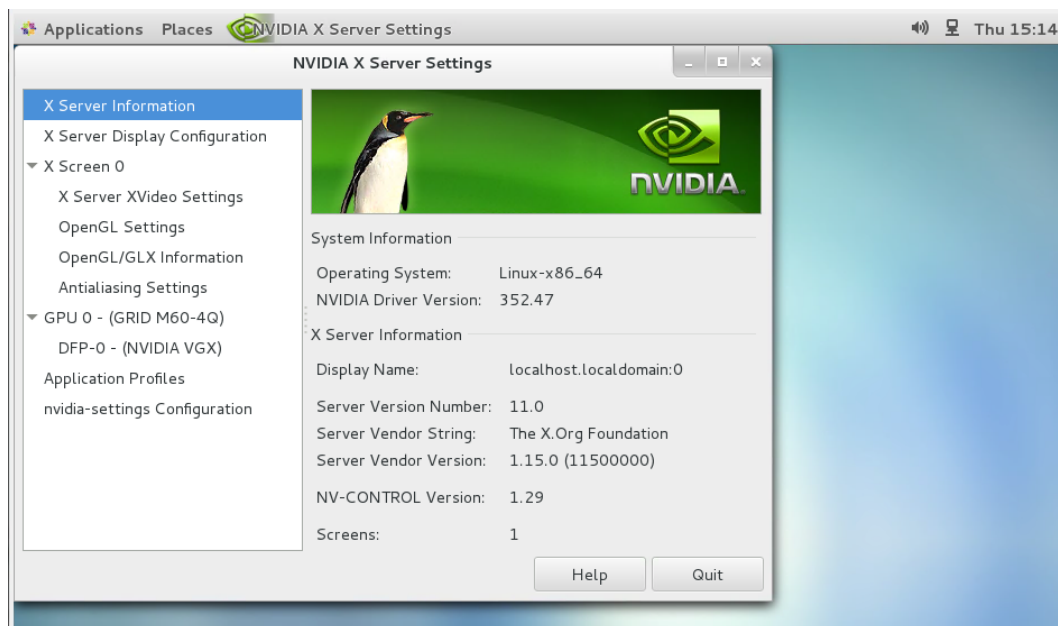


Figure 19 Verifying operation with `nvidia-settings`

3.2. Licensing GRID vGPU on Linux

GRID vGPU is a licensed feature on Tesla M6, Tesla M10, and Tesla M60 GPUs. When booted on these GPUs, a vGPU runs at full capability even without a license.

Full information on configuring and using GRID licensed features, including vGPU, is given in the *GRID Licensing User Guide*. Basic configuration information is given here.

To license GRID vGPU on Linux:

1. As root, open the file `/etc/nvidia/gridd.conf` in a plain-text editor, such as `vi`.

```
[nvidia@localhost ~]$ sudo vi /etc/nvidia/gridd.conf
```



You can create the `/etc/nvidia/gridd.conf` file by copying the supplied template file `/etc/nvidia/gridd.conf.template`.

2. Set `ServerAddress` to the address of your local NVIDIA GRID License Server. The address can be a fully-qualified domain name such as `gridlicense.example.com`, or an IP address such as `10.31.20.45`.
3. Optional: Set `ServerPort` to the port number of your local NVIDIA GRID License Server.

If you do not set `ServerPort`, it will default to `7070`, which is the default port number that is used by the NVIDIA GRID License Server.

4. Set `FeatureType` to `1`, to license vGPU.
5. Save your changes to the `/etc/nvidia/gridd.conf` file.
6. Restart the `nvidia-gridd` service:

```
[nvidia@localhost ~]$ sudo service nvidia-gridd restart
```

The service should automatically obtain a license.

7. Optional: Confirm that the service has obtained a license by examining the log messages written to `/var/log/messages`:

```
[nvidia@localhost ~]$ sudo grep gridd /var/log/messages
...
Aug 5 15:40:06 localhost nvidia-gridd: Started (4293)
Aug 5 15:40:24 localhost nvidia-gridd: License acquired successfully.
```

Once configured in `gridd.conf`, licensing settings persist across reboots and need only be modified if the license server address changes, or the VM is switched to running GPU passthrough.

`gridd.conf` file for GRID vGPU

The following example shows a `gridd.conf` file for GRID vGPU in which `ServerAddress` is set to `gridlicense.example.com`, `ServerPort` is set to `7070`, and `FeatureType` is set to `1`.

```
# /etc/nvidia/gridd.conf - Configuration file for NVIDIA Grid Daemon

# This is a template for the configuration file for NVIDIA Grid Daemon.
# For details on the file format, please refer to the nvidia-gridd(1)
# man page.

# Description: Set License Server Address
# Data type: string
# Format: "<address>"
ServerAddress=gridlicense.example.com

# Description: Set License Server port number
# Data type: integer
# Format: <port>, default is 7070
ServerPort=7070

# Description: Set Feature to be enabled
# Data type: integer
# Possible values:
#   1 => for GRID vGPU
#   2 => for GRID Virtual Workstation
FeatureType=1

# Description: Parameter to enable or disable Grid Licensing tab in nvidia-
settings
# Data type: boolean
# Possible values: TRUE or FALSE, default is TRUE
#EnableUI=TRUE

# Description: Set license borrow period in minutes
# Data type: integer
# Possible values: 10 to 10080 mins(7 days), default is 10080
#LicenseInterval=10080
```

Chapter 4.

MONITORING GPU PERFORMANCE

NVIDIA GRID enables you to monitor the performance of physical GPUs and virtual GPUs from the hypervisor and from within individual guest VMs.

You can use several tools for monitoring GPU performance:

- ▶ From any supported hypervisor, and from a guest VM that is running a 64-bit edition of Windows or Linux, you can use NVIDIA System Management Interface, `nvidia-smi`.
- ▶ From the Citrix XenServer hypervisor, you can use Citrix XenCenter.
- ▶ From a Windows guest VM, you can use these tools:
 - ▶ Windows Performance Monitor
 - ▶ Windows Management Instrumentation (WMI)

4.1. NVIDIA System Management Interface

`nvidia-smi`

NVIDIA System Management Interface, `nvidia-smi`, is a command-line tool that reports management information for NVIDIA GPUs.

The `nvidia-smi` tool is included in the following packages:

- ▶ NVIDIA GRID Virtual GPU Manager package for each supported hypervisor
- ▶ NVIDIA driver package for each supported guest OS

The scope of the reported management information depends on where you run `nvidia-smi` from:

- ▶ From a hypervisor command shell, such as the XenServer dom0 shell or VMware ESXi host shell, `nvidia-smi` reports management information for NVIDIA physical GPUs and virtual GPUs present in the system.




When run from a hypervisor command shell, `nvidia-smi` will not list any GPU that is currently allocated for GPU pass-through.

- ▶ From a guest VM that is running a 64-bit edition of Windows or Linux, `nvidia-smi` retrieves usage statistics for vGPUs or pass-through GPUs that are assigned to the VM.

From a Windows guest VM, you can run `nvidia-smi` from a command prompt by changing to the `C:\Program Files\NVIDIA Corporation\NVSMI` folder and running the `nvidia-smi.exe` command.


4.2. Monitoring GPU performance from a hypervisor

You can monitor GPU performance from any supported hypervisor by using the NVIDIA System Management Interface `nvidia-smi` command-line utility. On Citrix XenServer platforms, you can also use Citrix XenCenter to monitor GPU performance.

 You **cannot** monitor from the hypervisor the performance of GPUs that are being used for GPU pass-through. You can monitor the performance of pass-through GPUs only from within the guest VM that is using them.

4.2.1. Using `nvidia-smi` to monitor GPU performance from a hypervisor

You can get management information for the NVIDIA physical GPUs and virtual GPUs present in the system by running `nvidia-smi` from a hypervisor command shell such as the Citrix XenServer dom0 shell or the VMware ESXi host shell.

 When run from a hypervisor command shell, `nvidia-smi` will not list any GPU that is currently allocated for GPU pass-through.

Without a subcommand, `nvidia-smi` provides management information for **physical** GPUs. To examine **virtual** GPUs in more detail, use `nvidia-smi` with the `vgpu` subcommand.

From the command line, you can get help information about the `nvidia-smi` tool and the `vgpu` subcommand.

Help Information	Command
A list of subcommands supported by the <code>nvidia-smi</code> tool. Note that not all subcommands apply to GRID-supported GPUs.	<code>nvidia-smi -h</code>
A list of all options supported by the <code>vgpu</code> subcommand.	<code>nvidia-smi vgpu -h</code>

4.2.1.1. Getting a summary of all physical GPUs in the system

To get a summary of all physical GPUs in the system, along with PCI bus IDs, power state, temperature, current memory usage, and so on, run `nvidia-smi` without additional arguments.

Each vGPU instance is reported in the `Compute` processes section, together with its physical GPU index and the amount of frame-buffer memory assigned to it.

In the example that follows, three vGPUs are running in the system: One vGPU is running on each of the physical GPUs 0, 1, and 2.

```
[root@vgpu ~]# nvidia-smi
Fri Jun 16 09:26:18 2017
+-----+
| NVIDIA-SMI 367.106                Driver Version: 367.106          |
|-----+-----+-----+-----+-----+-----+-----+-----+
| GPU  Name          Persistence-M| Bus-Id        Disp.A | Volatile Uncorr. ECC |
| Fan  Temp   Perf   Pwr:Usage/Cap|      Memory-Usage | GPU-Util  Compute M. |
|====+=====+====+=====+=====+=====+=====+=====+
|   0   Tesla M60           On      | 0000:83:00.0  Off  |           Off       |
| N/A   31C    P8     23W / 150W | 1889MiB / 8191MiB |    7%      Default  |
|-----+-----+-----+-----+-----+-----+
|   1   Tesla M60           On      | 0000:84:00.0  Off  |           Off       |
| N/A   26C    P8     23W / 150W |  926MiB / 8191MiB |    9%      Default  |
|-----+-----+-----+-----+-----+-----+
|   2   Tesla M10          On      | 0000:8A:00.0  Off  |           N/A      |
| N/A   23C    P8     10W /  53W | 1882MiB / 8191MiB |   12%      Default  |
|-----+-----+-----+-----+-----+-----+
|   3   Tesla M10          On      | 0000:8B:00.0  Off  |           N/A      |
| N/A   26C    P8     10W /  53W |  10MiB / 8191MiB |    0%      Default  |
|-----+-----+-----+-----+-----+-----+
|   4   Tesla M10          On      | 0000:8C:00.0  Off  |           N/A      |
| N/A   34C    P8     10W /  53W |  10MiB / 8191MiB |    0%      Default  |
|-----+-----+-----+-----+-----+-----+
|   5   Tesla M10          On      | 0000:8D:00.0  Off  |           N/A      |
| N/A   32C    P8     10W /  53W |  10MiB / 8191MiB |    0%      Default  |
|-----+-----+-----+-----+-----+-----+
| Processes:                                     GPU Memory |
|  GPU       PID    Type   Process name                               Usage      |
|====+=====+====+=====+=====+=====+=====+=====+
|   0         11924  C+G   /usr/lib64/xen/bin/vgpu                   1856MiB   |
|   1         11903  C+G   /usr/lib64/xen/bin/vgpu                    896MiB   |
|   2         11908  C+G   /usr/lib64/xen/bin/vgpu                   1856MiB   |
|-----+-----+-----+-----+-----+-----+
[root@vgpu ~]#
```

4.2.1.2. Getting a summary of all vGPUs in the system

To get a summary of the vGPUs currently that are currently running on each physical GPU in the system, run `nvidia-smi vgpu` without additional arguments.

```
[root@vgpu ~]# nvidia-smi vgpu
Fri Jun 16 09:27:06 2017
+-----+
| NVIDIA-SMI 367.106                Driver Version: 367.106          |
|-----+-----+-----+-----+-----+-----+
| GPU  Name          | Bus-Id        | GPU-Util  |
| vGPU ID  Name      | VM ID  VM Name  | vGPU-Util |
|====+=====+====+=====+=====+=====+=====+=====+
|   0   Tesla M60           | 0000:83:00.0  |    7%     |
| 11924   GRID M60-2Q      | 3      Win7-64 GRID test 2 |    6%     |
|-----+-----+-----+-----+-----+-----+
|   1   Tesla M60           | 0000:84:00.0  |    9%     |
| 11903   GRID M60-1B      | 1      Win8.1-64 GRID test 3 |    8%     |
|-----+-----+-----+-----+-----+-----+
+-----+-----+-----+-----+-----+-----+

```



```

| 2 Tesla M10 | 0000:8A:00.0 | 12% |
| 11908 GRID M10-2Q | 2 Win7-64 GRID test 1 | 10% |
+-----+-----+-----+
| 3 Tesla M10 | 0000:8B:00.0 | 0% |
+-----+-----+-----+
| 4 Tesla M10 | 0000:8C:00.0 | 0% |
+-----+-----+-----+
| 5 Tesla M10 | 0000:8D:00.0 | 0% |
+-----+-----+-----+
[root@vgpu ~]#

```

4.2.1.3. Getting vGPU details

To get detailed information about all the vGPUs on the platform, run `nvidia-smi vgpu` with the `-q` or `--query` option.

To limit the information retrieved to a subset of the GPUs on the platform, use the `-i` or `--id` option to select one or more vGPUs.

```

[root@vgpu ~]# nvidia-smi vgpu -q -i 1
GPU 0000:84:00.0
  Active vGPUs           : 1
  vGPU ID                : 11903
  VM ID                  : 1
  VM Name                 : Win8.1-64 GRID test 3
  vGPU Name               : GRID M60-1B
  vGPU Type               : 14
  vGPU UUID              : e9bacbcb-19f6-47b5-7fd5-de2b039d0c4a
  Guest Driver Version   : 368.61
  License Status         : Unlicensed
  Frame Rate Limit       : 45 FPS
  FB Memory Usage        :
  Total                  : 1024 MiB
  Used                   : 1024 MiB
  Free                   : 0 MiB
  Utilization            :
  Gpu                    : 9 %
  Memory                 : 3 %
  Encoder                 : 0 %
  Decoder                 : 0 %
[root@vgpu ~]#

```

4.2.1.4. Monitoring vGPU engine usage

To monitor vGPU engine usage across multiple vGPUs, run `nvidia-smi vgpu` with the `-u` or `--utilization` option.

For each vGPU, the usage statistics in the following table are reported once every second. The table also shows the name of the column in the command output under which each statistic is reported.

Statistic	Column
3D/Compute	sm
Memory controller bandwidth	mem
Video encoder	enc

Statistic	Column
Video decoder	dec

Each reported percentage is the percentage of the physical GPU's capacity that a vGPU is using. For example, a vGPU that uses 20% of the GPU's graphics engine's capacity will report 20%.

GRID vGPUs are permitted to occupy the full capacity of each physical engine if no other vGPUs are contending for the same engine. Therefore, if a vGPU occupies 20% of the entire graphics engine in a particular sampling period, its graphics usage as reported inside the VM is 20%.

To modify the reporting frequency, use the `-l` or `--loop` option.

To limit monitoring to a subset of the GPUs on the platform, use the `-i` or `--id` option to select one or more vGPUs.

```
[root@vgpu ~]# nvidia-smi vgpu -u
# gpu      vgpu      sm      mem      enc      dec
# Idx      Id        %       %        %        %
  0      11924      6       3        0        0
  1      11903      8       3        0        0
  2      11908     10       4        0        0
  3         -        -        -        -        -
  4         -        -        -        -        -
  5         -        -        -        -        -
  0      11924      6       3        0        0
  1      11903      9       3        0        0
  2      11908     10       4        0        0
  3         -        -        -        -        -
  4         -        -        -        -        -
  5         -        -        -        -        -
  0      11924      6       3        0        0
  1      11903      8       3        0        0
  2      11908     10       4        0        0
  3         -        -        -        -        -
  4         -        -        -        -        -
  5         -        -        -        -        -
^C[root@vgpu ~]#
```

4.2.1.5. Listing supported vGPU types

To list the virtual GPU types that the GPUs in the system support, run `nvidia-smi vgpu` with the `-s` or `--supported` option.

To limit the retrieved information to a subset of the GPUs on the platform, use the `-i` or `--id` option to select one or more vGPUs.

```
[root@vgpu ~]# nvidia-smi vgpu -s -i 0
GPU 0000:83:00.0
  GRID M60-0B
  GRID M60-0Q
  GRID M60-1A
  GRID M60-1B
  GRID M60-1Q
  GRID M60-2A
  GRID M60-2Q
```

```

GRID M60-4A
GRID M60-4Q
GRID M60-8A
GRID M60-8Q
[root@vgpu ~]#

```

To view detailed information about the supported vGPU types, add the `-v` or `--verbose` option:

```

[root@vgpu ~]# nvidia-smi vgpu -s -i 0 -v
GPU 0000:83:00.0
  vGPU Type ID      : 0xb
  Name              : GRID M60-0B
  Class             : NVS
  Max Instances     : 16
  Device ID        : 0x13f210de
  Sub System ID    : 0x13f21176
  FB Memory        : 512 MiB
  Display Heads    : 2
  Maximum X Resolution : 2560
  Maximum Y Resolution : 1600
  Frame Rate Limit : 45 FPS
  GRID License     : GRID-Virtual-PC,2.0;GRID-Virtual-WS,2.0;GRID-
Virtual-WS-Ext,2.0
  vGPU Type ID      : 0xc
  Name              : GRID M60-0Q
  Class             : Quadro
  Max Instances     : 16
  Device ID        : 0x13f210de
  Sub System ID    : 0x13f2114c
  FB Memory        : 512 MiB
  Display Heads    : 2
  Maximum X Resolution : 2560
  Maximum Y Resolution : 1600
  Frame Rate Limit : 60 FPS
  GRID License     : GRID-Virtual-WS,2.0;GRID-Virtual-WS-Ext,2.0
  vGPU Type ID      : 0xd
  Name              : GRID M60-1A
  Class             : NVS
  Max Instances     : 8
  ...
[root@vgpu ~]#

```

4.2.1.6. Listing the vGPU types that can currently be created

To list the virtual GPU types that can currently be created on GPUs in the system, run `nvidia-smi vgpu` with the `-c` or `--creatable` option.

This property is a dynamic property that varies according to the vGPUs that are already running on each GPU.

To limit the retrieved information to a subset of the GPUs on the platform, use the `-i` or `--id` option to select one or more vGPUs.

```

[root@vgpu ~]# nvidia-smi vgpu -c -i 0
GPU 0000:83:00.0
  GRID M60-2Q
[root@vgpu ~]#

```

To view detailed information about the vGPU types that can currently be created, add the `-v` or `--verbose` option.

4.2.2. Using Citrix XenCenter to monitor GPU performance

If you are using Citrix XenServer as your hypervisor, you can monitor GPU performance in XenCenter.

1. Click on a server's **Performance** tab.
2. Right-click on the graph window, then select **Actions** and **New Graph**.
3. Provide a name for the graph.
4. In the list of available counter resources, select one or more GPU counters.

Counters are listed for each physical GPU not currently being used for GPU pass-through.

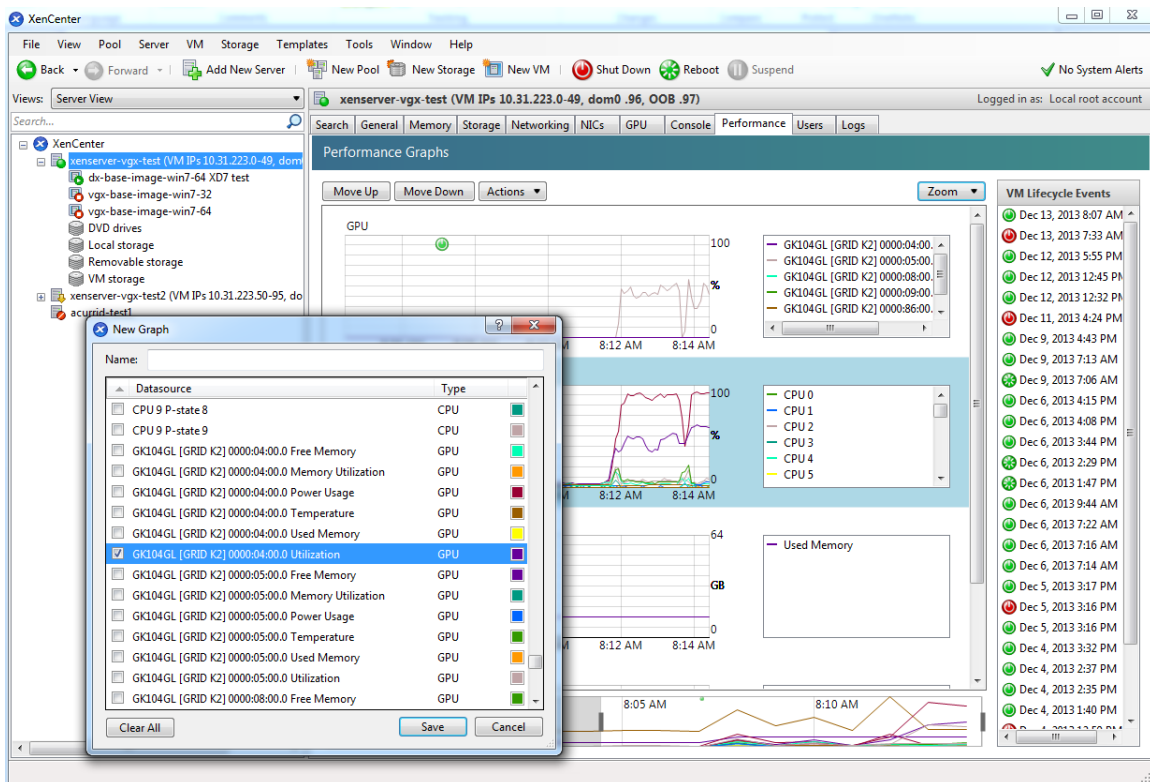


Figure 20 Using Citrix XenCenter to monitor GPU performance

4.3. Monitoring GPU performance from a guest VM

You can use monitoring tools within an individual guest VM to monitor the performance of vGPUs or pass-through GPUs that are assigned to the VM. The scope of these tools is limited to the guest VM within which you use them. You cannot use monitoring tools within an individual guest VM to monitor any other GPUs in the platform.

For a vGPU, only the metrics that indicate the percentage of the vGPU's full capacity that is currently being used are reported in guest VMs, namely:

- ▶ 3D/Compute
- ▶ Memory controller
- ▶ Video encoder
- ▶ Video decoder
- ▶ Frame buffer usage

Other metrics normally present in a GPU are not applicable to a vGPU and are reported as zero or N/A, depending on the tool that you are using.

4.3.1. Using `nvidia-smi` to monitor GPU performance from a guest VM

In VMs that are running 64-bit editions of Windows and Linux, you can use the `nvidia-smi` command to retrieve the following usage statistics:

- ▶ GPU
- ▶ Video encoder
- ▶ Video decoder
- ▶ Frame buffer

To use `nvidia-smi` to monitor GPU performance from a guest VM, run the following command:

```
nvidia-smi -q -d UTILIZATION
```

The following example shows the result of running `nvidia-smi` from within a Windows guest VM.

```

C:\Windows\system32\cmd.exe
C:\Program Files\NVIDIA Corporation\NVSMI>nvidia-smi
Thu Jul 21 11:42:06 2016

+-----+
| NVIDIA-SMI 368.93                 Driver Version: 368.93          |
+-----+-----+
| GPU   Name      TCC/WDDM  Bus-Id  Disp.A | Volatile Uncorr. ECC |
| Fan  Temp  Perf  Pwr:Usage/Cap | Memory-Usage | GPU-Util  Compute M. |
+-----+-----+
|  0    GRID M10-2Q      WDDM    0000:00:0B:0    On          |             6%    Prohibited |
| N/A   N/A    P8     N/A /  N/A     | 226MiB / 2048MiB |             |             |
+-----+-----+

Processes:
+-----+-----+
| GPU   PID  Type  Process name                       | GPU Memory Usage |
+-----+-----+
|  0    536  C+G   Insufficient Permissions            | N/A               |
|  0    880  C+G   ...poration\Control Panel Client\ncvplui.exe | N/A               |
|  0   1752  C+G   ...s (x86)\Windows Media Player\wmplayer.exe | N/A               |
+-----+-----+

C:\Program Files\NVIDIA Corporation\NVSMI>

```

Figure 21 Using `nvidia-smi` from a Windows guest VM

4.3.2. Using Windows Performance Counters to monitor GPU performance

In Windows VMs, GPU metrics are available as [Windows Performance Counters](#) through the `NVIDIA GPU` object.

Any application that is enabled to read performance counters can access these metrics. You can access these metrics directly through the [Windows Performance Monitor](#) application that is included with the Windows OS.

The following example shows GPU metrics in the **Performance Monitor** application.

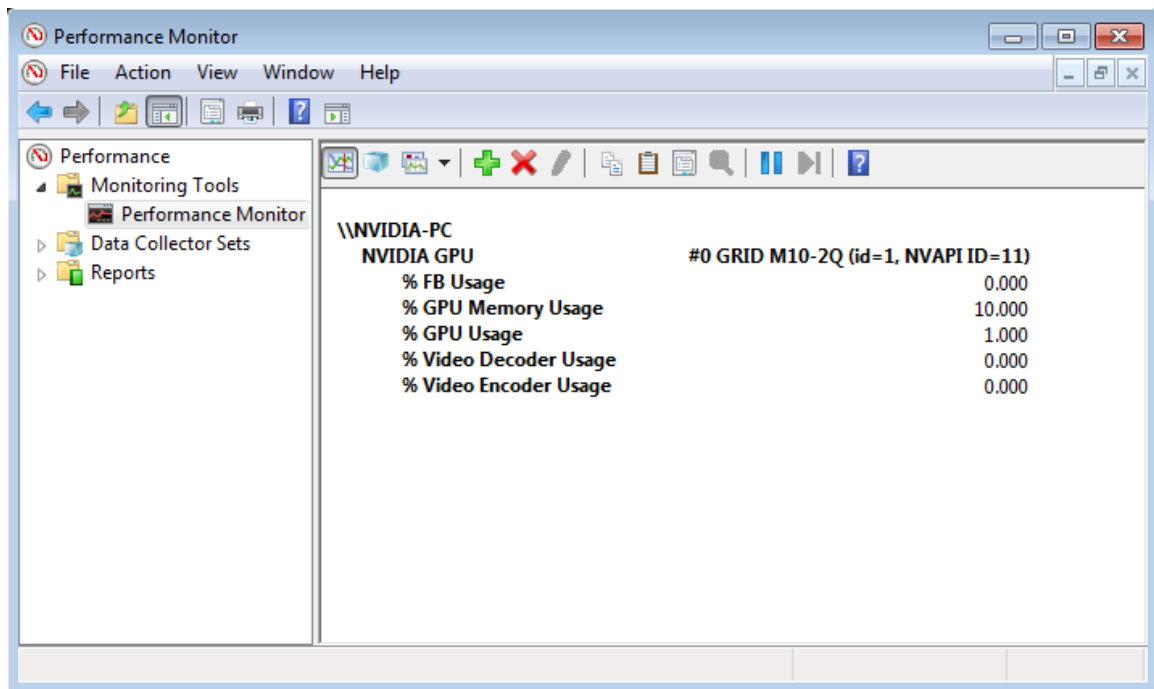


Figure 22 Using Windows Performance Monitor to monitor GPU performance

On vGPUs, the following GPU performance counters read as 0 because they are not applicable to vGPUs:

- ▶ % Bus Usage
- ▶ % Cooler rate
- ▶ Core Clock MHz
- ▶ Fan Speed
- ▶ Memory Clock MHz
- ▶ PCI-E current speed to GPU Mbps
- ▶ PCI-E current width to GPU
- ▶ PCI-E downstream width to GPU

- ▶ Power Consumption mW
- ▶ Temperature C

4.3.3. Using NVWMI to monitor GPU performance

In Windows VMs, [Windows Management Instrumentation \(WMI\)](#) exposes GPU metrics in the `ROOT\CIMV2\NV` namespace through NVWMI. NVWMI is included with the NVIDIA driver package. After the driver is installed, NVWMI help information in Windows Help format is available as follows:

```
C:\Program Files\NVIDIA Corporation\NVIDIA WMI Provider>nvwmi.chm
```

Any WMI-enabled application can access these metrics. The following example shows GPU metrics in the third-party application WMI Explorer, which is available for download from the [CodePlex WMI Explorer](#) page.

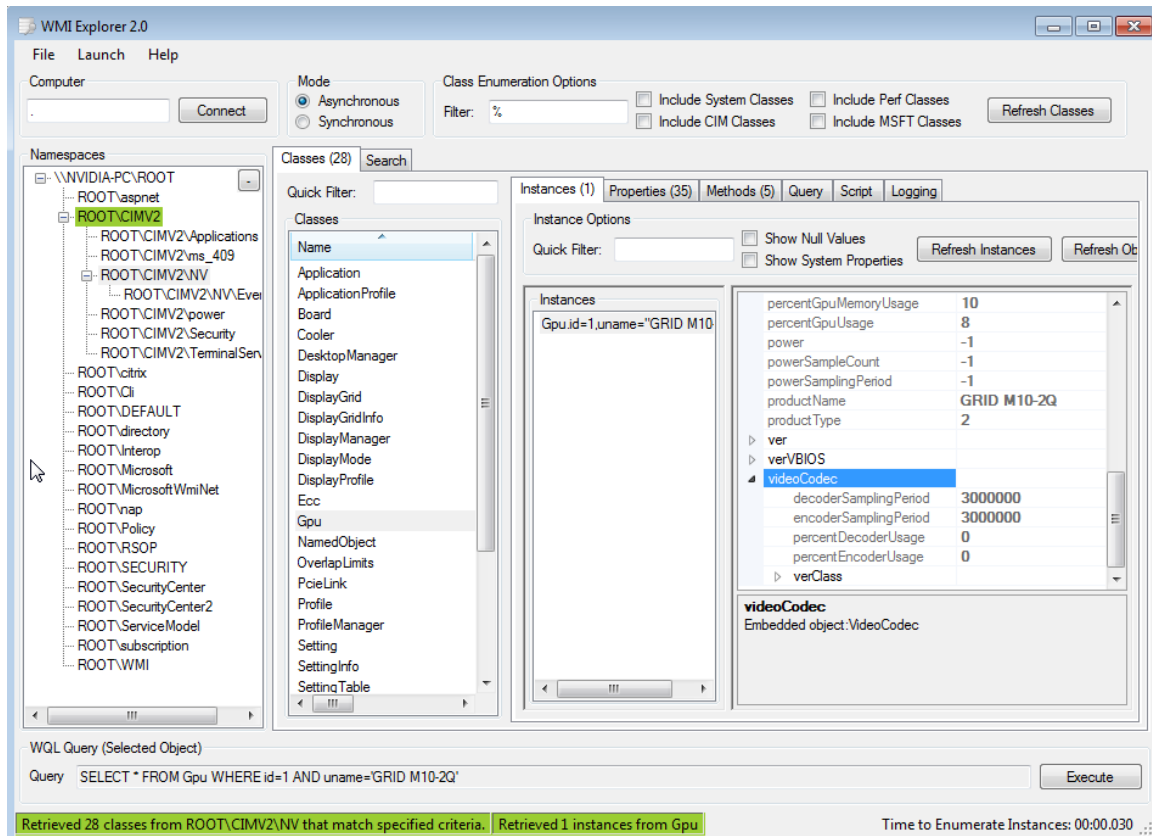


Figure 23 Using WMI Explorer to monitor GPU performance

On vGPUs, some instance properties of the following classes do not apply to vGPUs:

- ▶ Ecc
- ▶ Gpu
- ▶ PcieLink

Ecc instance properties that do not apply to vGPUs

Ecc Instance Property	Value reported on vGPU
isSupported	False
isWritable	False
isEnabled	False
isEnabledByDefault	False
aggregateDoubleBitErrors	0
aggregateSingleBitErrors	0
currentDoubleBitErrors	0
currentSingleBitErrors	0

Gpu instance properties that do not apply to vGPUs

Gpu Instance Property	Value reported on vGPU
gpuCoreClockCurrent	-1
memoryClockCurrent	-1
pciDownstreamWidth	0
pcieGpu.curGen	0
pcieGpu.curSpeed	0
pcieGpu.curWidth	0
pcieGpu.maxGen	1
pcieGpu.maxSpeed	2500
pcieGpu.maxWidth	0
power	-1
powerSampleCount	-1
powerSamplingPeriod	-1
verVBIOS.orderedValue	0
verVBIOS.strValue	-
verVBIOS.value	0

PcieLink instance properties that do not apply to vGPUs

No instances of PcieLink are reported for vGPU.

Chapter 5.

XENSERVER VGPU MANAGEMENT

This chapter describes Citrix XenServer advanced vGPU management techniques using XenCenter and `xe` command line operations.

5.1. Management objects for GPUs

XenServer uses four underlying management objects for GPUs: physical GPUs, vGPU types, GPU groups, and vGPUs. These objects are used directly when managing vGPU by using `xe`, and indirectly when managing vGPU by using XenCenter.

5.1.1. `pgpu` - physical GPU

A `pgpu` object represents a physical GPU, such as one of the multiple GPUs present on a GRID K1 or K2 card. XenServer automatically creates `pgpu` objects at startup to represent each physical GPU present on the platform.

5.1.1.1. Listing the `pgpu` objects present on a platform

To list the physical GPU objects present on a platform, use `xe pgpu-list`.

For example, this platform contains a single GRID K2 card with two physical GPUs:

```
[root@xenserver ~]# xe pgpu-list
uuid ( RO)                : 7c1e3cff-1429-0544-df3d-bf8a086fb70a
  vendor-name ( RO)       : NVIDIA Corporation
  device-name ( RO)       : GK104GL [GRID K2]
  gpu-group-uuid ( RW)    : be825ba2-01d7-8d51-9780-f82cfaa64924

uuid ( RO)                : d07fa627-7dc9-f625-92be-ce5d2655e830
  vendor-name ( RO)       : NVIDIA Corporation
  device-name ( RO)       : GK104GL [GRID K2]
  gpu-group-uuid ( RW)    : be825ba2-01d7-8d51-9780-f82cfaa64924
[root@xenserver ~]#
```

5.1.1.2. Viewing detailed information about a `pgpu` object

To view detailed information about a `pgpu`, use `xe pgpu-param-list`:

```
[root@xenserver ~]# xe pgpu-param-list uuid=d07fa627-7dc9-f625-92be-ce5d2655e830
```

```

uuid ( RO)                : d07fa627-7dc9-f625-92be-ce5d2655e830
  vendor-name ( RO)       : NVIDIA Corporation
  device-name ( RO)       : GK104GL [GRID K2]
  gpu-group-uuid ( RW)    : 315a1e1e-6d0c-1cb3-7903-1602d236a33a
  gpu-group-name-label ( RO) : Group of NVIDIA Corporation GK104GL [GRID K2]
GPUs
  host-uuid ( RO)        : 2305cc32-c2d8-4fbd-b1aa-d0b0121ba454
  host-name-label ( RO)  : acurrid-vgpu-2 (VM IPs 10.31.223.0 -
10.31.223.19)
  pci-id ( RO)          : 0000:0a:00.0
  dependencies (SRO)    :
  other-config (MRW)    :
  supported-VGPU-types ( RO) : c18ab767-ba72-b286-9350-d8010bab4f30;
7cd190db-e4fe-e824-cf4a-ff1604882323; 24a7baa3-a70a-8c7b-ee7d-f437e0857eca;
bfcfb8cd-c01b-2691-272c-8e908937922d; 0d581f02-c601-a9b1-f440-f852f31f583e;
2c210411-7de3-37f5-c58c-9635b40d50f6
  enabled-VGPU-types (SRW) : c18ab767-ba72-b286-9350-d8010bab4f30;
7cd190db-e4fe-e824-cf4a-ff1604882323; 24a7baa3-a70a-8c7b-ee7d-f437e0857eca;
bfcfb8cd-c01b-2691-272c-8e908937922d; 0d581f02-c601-a9b1-f440-f852f31f583e;
2c210411-7de3-37f5-c58c-9635b40d50f6
  resident-VGPUs ( RO)   :
[root@xenserver ~]#
    
```

5.1.1.3. Viewing physical GPUs in XenCenter

To view physical GPUs in XenCenter, click on the server’s GPU tab:

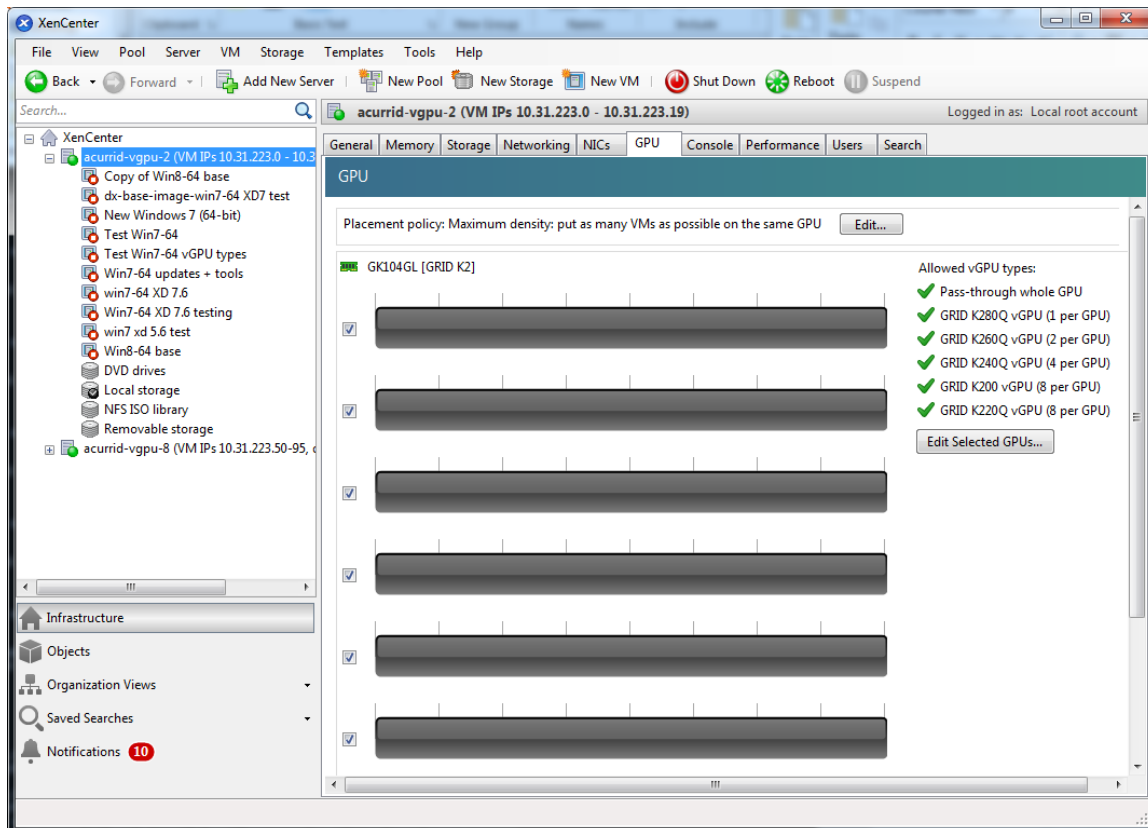


Figure 24 Physical GPU display in XenCenter

5.1.2. `vgpu-type` - virtual GPU type

A `vgpu-type` represents a type of virtual GPU, such as GRID K100, K140Q, K200, etc. An additional, pass-through vGPU type is defined to represent a physical GPU that is directly assignable to a single guest VM.

XenServer automatically creates `vgpu-type` objects at startup to represent each virtual type supported by the physical GPUs present on the platform.

5.1.2.1. Listing the `vgpu-type` objects present on a platform

To list the `vgpu-type` objects present on a platform, use `xe vgpu-type-list`.

For example, as this platform contains multiple GRID K2 cards, the vGPU types reported are solely those supported by GRID K2:

```
[root@xenserver ~]# xe vgpu-type-list
uuid ( RO)                : 7cd190db-e4fe-e824-cf4a-ff1604882323
  vendor-name ( RO)       : NVIDIA Corporation
  model-name ( RO)        : GRID K240Q
  max-heads ( RO)         : 2
  max-resolution ( RO)    : 2560x1600

uuid ( RO)                : 2c210411-7de3-37f5-c58c-9635b40d50f6
  vendor-name ( RO)       : NVIDIA Corporation
  model-name ( RO)        : GRID K220Q
  max-heads ( RO)         : 2
  max-resolution ( RO)    : 2560x1600

uuid ( RO)                : 24a7baa3-a70a-8c7b-ee7d-f437e0857eca
  vendor-name ( RO)       : NVIDIA Corporation
  model-name ( RO)        : GRID K260Q
  max-heads ( RO)         : 4
  max-resolution ( RO)    : 2560x1600

uuid ( RO)                : 0d581f02-c601-a9b1-f440-f852f31f583e
  vendor-name ( RO)       : NVIDIA Corporation
  model-name ( RO)        : GRID K200
  max-heads ( RO)         : 2
  max-resolution ( RO)    : 1920x1200

uuid ( RO)                : c18ab767-ba72-b286-9350-d8010bab4f30
  vendor-name ( RO)       :
  model-name ( RO)        : passthrough
  max-heads ( RO)         : 0
  max-resolution ( RO)    : 0x0

uuid ( RO)                : bfcfb8cd-c01b-2691-272c-8e908937922d
  vendor-name ( RO)       : NVIDIA Corporation
  model-name ( RO)        : GRID K280Q
  max-heads ( RO)         : 4
  max-resolution ( RO)    : 2560x1600

[root@xenserver ~]#
```

5.1.2.2. Viewing detailed information about a `vgpu-type` object

To see detailed information about a `vgpu-type`, use `xe vgpu-type-param-list`:

```
[root@xenserver ~]# xe vgpu-type-param-list uuid=7cd190db-e4fe-e824-cf4a-ff1604882323
uuid ( RO)                               : 7cd190db-e4fe-e824-cf4a-ff1604882323
      vendor-name ( RO): NVIDIA Corporation
      model-name ( RO): GRID K240Q
      framebuffer-size ( RO): 939524096
      max-heads ( RO): 2
      max-resolution ( RO): 2560x1600
      supported-on-PGPUs ( RO): d72b9b0d-ae86-a1fa-4432-a46bcef4a4ab;
171f00fc-dff2-ecb0-5bdb-8f050da2fd8b; 13cfa311-93fe-79e5-f94f-1e8c38a88486;
a9474d47-ddba-ab3a-8f44-58163ffa49f8; 8d147385-40a5-7305-95ea-de92ed4bcfc8;
d3984345-f8e1-c5fe-c5fc-78d2225f0382; 50493ce6-f3b1-1bd9-c012-2457472f2a92;
4778208a-97a9-cbf0-ceed-a20cd28f91f3
      enabled-on-PGPUs ( RO): d72b9b0d-ae86-a1fa-4432-a46bcef4a4ab;
171f00fc-dff2-ecb0-5bdb-8f050da2fd8b; 13cfa311-93fe-79e5-f94f-1e8c38a88486;
a9474d47-ddba-ab3a-8f44-58163ffa49f8; 8d147385-40a5-7305-95ea-de92ed4bcfc8;
d3984345-f8e1-c5fe-c5fc-78d2225f0382; 50493ce6-f3b1-1bd9-c012-2457472f2a92;
4778208a-97a9-cbf0-ceed-a20cd28f91f3
      supported-on-GPU-groups ( RO): 315a1e1e-6d0c-1cb3-7903-1602d236a33a
      enabled-on-GPU-groups ( RO): 315a1e1e-6d0c-1cb3-7903-1602d236a33a
      VGPU-uuids ( RO): b6242c9c-87ad-92e9-5a24-a6bd1a3d8950
[root@xenserver ~]#
```

5.1.3. `gpu-group` - collection of physical GPUs

A `gpu-group` is a collection of physical GPUs, all of the same type. XenServer automatically creates `gpu-group` objects at startup to represent the distinct types of physical GPU present on the platform.

5.1.3.1. Listing the `gpu-group` objects present on a platform

To list the `gpu-group` objects present on a platform, use `xe gpu-group-list`.

For example, a system with a single GRID K2 card contains a single GPU group of type GRID K2:

```
[root@xenserver ~]# xe gpu-group-list
uuid ( RO)                               : be825ba2-01d7-8d51-9780-f82cfaa64924
      name-label ( RW): Group of NVIDIA Corporation GK104GL [GRID K2] GPUs
      name-description ( RW):
[root@xenserver ~]#
```

5.1.3.2. Viewing detailed information about a `gpu-group` object

To view detailed information about a `gpu-group`, use `xe gpu-group-param-list`:

```
[root@xenserver ~]# xe gpu-group-param-list uuid=be825ba2-01d7-8d51-9780-f82cfaa64924
uuid ( RO)                               : be825ba2-01d7-8d51-9780-f82cfaa64924
      name-label ( RW): Group of NVIDIA Corporation GK104GL [GRID K2]
GPUs
      name-description ( RW):
      VGPU-uuids (SRO): 6493ff45-d895-764c-58d8-96f1bc0307aa;
8481cb68-66e5-25e6-a0c0-bd691df682b3; b73cbd30-096f-8a9a-523e-a800062f4ca7
```

```

PGPU-uuids (SRO): a4a4df34-4e5f-de9f-82d6-2134d9e339dc;
84c76e93-555c-5ffa-e9a9-0d6fcb9ff48d; d07fa627-7dc9-f625-92be-ce5d2655e830;
7c1e3cff-1429-0544-df3d-bf8a086fb70a
other-config (MRW):
  enabled-VGPU-types ( RO): d1fb00dd-02e6-e7df-ccd5-1944965ece55;
1a312df9-5397-bd44-c447-c6da804d2fe7; fa50b0f0-9705-6c59-689e-ea62a3d35237;
3f318889-7508-c9fd-7134-003d4d05ae56
  supported-VGPU-types ( RO): d1fb00dd-02e6-e7df-ccd5-1944965ece55;
1a312df9-5397-bd44-c447-c6da804d2fe7; fa50b0f0-9705-6c59-689e-ea62a3d35237;
3f318889-7508-c9fd-7134-003d4d05ae56
  allocation-algorithm ( RW): depth-first

[root@xenserver ~]

```

5.1.4. vgpu - virtual GPU

A `vgpu` object represents a virtual GPU. Unlike the other GPU management objects, `vgpu` objects are not created automatically by XenServer. Instead, they are created as follows:

- ▶ When a VM is configured through XenCenter or through `xe` to use a vGPU
- ▶ By cloning a VM that is configured to use vGPU, as explained in [Cloning vGPU-enabled VMs](#)

5.2. Creating a vGPU using `xe`

Use `xe vgpu-create` to create a `vgpu` object, specifying the type of vGPU required, the GPU group it will be allocated from, and the VM it is associated with:

```

[root@xenserver ~]# xe vgpu-create vm-uuid=e71afda4-53f4-3a1b-6c92-
a364a7f619c2 gpu-group-uuid=be825ba2-01d7-8d51-9780-f82cfaa64924 vgpu-type-
uuid=3f318889-7508-c9fd-7134-003d4d05ae56b73cbd30-096f-8a9a-523e-a800062f4ca7
[root@xenserver ~]#

```

Creating the `vgpu` object for a VM does not immediately cause a virtual GPU to be created on a physical GPU. Instead, the `vgpu` object is created whenever its associated VM is started. For more details on how vGPUs are created at VM startup, see [Controlling vGPU allocation](#).



The owning VM must be in the powered-off state in order for the `vgpu-create` command to succeed.

A `vgpu` object's owning VM, associated GPU group, and vGPU type are fixed at creation and cannot be subsequently changed. To change the type of vGPU allocated to a VM, delete the existing `vgpu` object and create another one.

5.3. Controlling vGPU allocation

Configuring a VM to use a vGPU in XenCenter, or creating a `vgpu` object for a VM using `xe`, does not immediately cause a virtual GPU to be created; rather, the virtual GPU is created at the time the VM is next booted, using the following steps:

- ▶ The GPU group that the `vgpu` object is associated with is checked for a physical GPU that can host a vGPU of the required type (i.e. the `vgpu` object's associated `vgpu-type`). Because vGPU types cannot be mixed on a single physical GPU, the new vGPU can only be created on a physical GPU that has no vGPUs resident on it, or only vGPUs of the same type, and less than the limit of vGPUs of that type that the physical GPU can support.
- ▶ If no such physical GPUs exist in the group, the `vgpu` creation fails and the VM startup is aborted.
- ▶ Otherwise, if more than one such physical GPU exists in the group, a physical GPU is selected according to the GPU group's *allocation policy*, as described in [GPU allocation policy](#)

5.3.1. GPU allocation policy

XenServer creates GPU groups with a default allocation policy of *depth-first*. The depth-allocation policy attempts to maximize the number of vGPUs running on each physical GPU within the group, by placing newly-created vGPUs on the physical GPU that can support the new vGPU and that has the most number of vGPUs already resident. This policy generally leads to higher density of vGPUs, particularly when different types of vGPUs are being run, but may result in lower performance because it attempts to maximize sharing of physical GPUs.

Conversely, a *breadth-first* allocation policy attempts to minimize the number of vGPUs running on each physical GPU within the group, by placing newly-created vGPUs on the physical GPU that can support the new vGPU and that has the least number of vGPUs already resident. This policy generally leads to higher performance because it attempts to minimize sharing of physical GPUs, but in doing so it may artificially limit the total number of vGPUs that can run.

5.3.1.1. Controlling GPU allocation policy by using `xe`

The allocation policy of a GPU group is stored in the `allocation-algorithm` parameter of the `gpu-group` object.

To change the allocation policy of a GPU group, use `gpu-group-param-set`:

```
[root@xenserver ~]# xe gpu-group-param-get uuid=be825ba2-01d7-8d51-9780-f82cfaa64924 param-name=allocation-algorithmdepth-first
[root@xenserver ~]# xe gpu-group-param-set uuid=be825ba2-01d7-8d51-9780-f82cfaa64924 allocation-algorithm=breadth-first
[root@xenserver ~]#
```

5.3.1.2. Controlling GPU allocation policy by using XenCenter

You can control GPU allocation policy from the **GPU** tab in XenCenter.

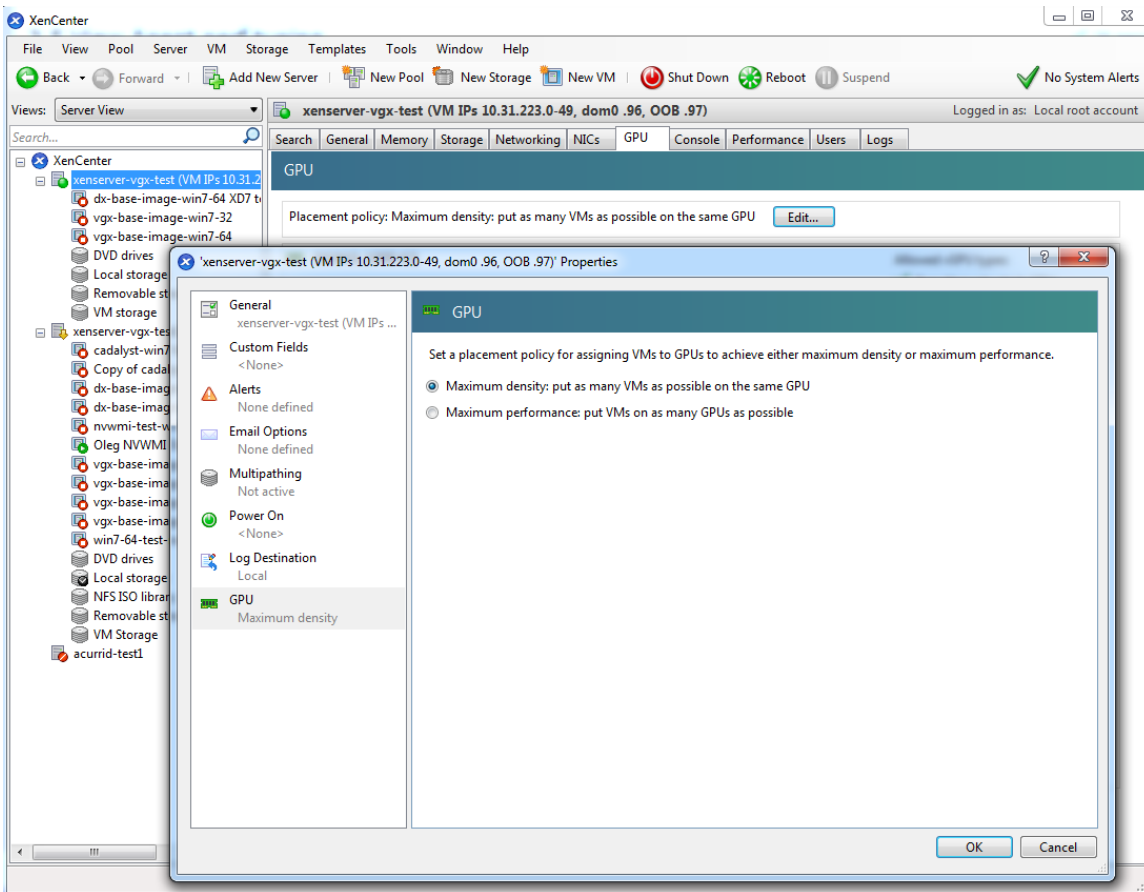


Figure 25 Modifying GPU placement policy in XenCenter

5.3.2. Determining the physical GPU that a virtual GPU is resident on

The `vgpu` object's `resident-on` parameter returns the UUID of the `pgpu` object for the physical GPU the vGPU is resident on.

To determine the physical GPU that a virtual GPU is resident on, use `vgpu-param-get`:

```
[root@xenserver ~]# xe vgpu-param-get uuid=8481cb68-66e5-25e6-a0c0-bd691df682b3
param-name=resident-on
a4a4df34-4e5f-de9f-82d6-2134d9e339dc

[root@xenserver ~]# xe pgpu-param-list uuid=a4a4df34-4e5f-de9f-82d6-2134d9e339dc
uuid ( RO)                : a4a4df34-4e5f-de9f-82d6-2134d9e339dc
  vendor-name ( RO)       : NVIDIA Corporation
  device-name ( RO)       : GK104GL [GRID K2]
  gpu-group-uuid ( RW)    : be825ba2-01d7-8d51-9780-f82cfaa64924
  gpu-group-name-label ( RO) : Group of NVIDIA Corporation GK104GL [GRID K2]
GPUs
  host-uuid ( RO)        : 6f6209a6-0f11-4c51-b12d-2bce361e9639
  host-name-label ( RO)  : xenserver (VM IPs 10.31.213.50-95, dom0 .98,
OOB .99)
  pci-id ( RO)           : 0000:09:00.0
  dependencies (SRO)    :
  other-config (MRW)    :
```



```

supported-VGPU-types ( RO): fa50b0f0-9705-6c59-689e-ea62a3d35237;
1a312df9-5397-bd44-c447-c6da804d2fe7; d1fb00dd-02e6-e7df-ccd5-1944965ece55;
3f318889-7508-c9fd-7134-003d4d05ae56
enabled-VGPU-types (SRW): fa50b0f0-9705-6c59-689e-ea62a3d35237;
1a312df9-5397-bd44-c447-c6da804d2fe7; d1fb00dd-02e6-e7df-ccd5-1944965ece55;
3f318889-7508-c9fd-7134-003d4d05ae56
resident-VGPUs ( RO): 8481cb68-66e5-25e6-a0c0-bd691df682b3

[root@xenserver ~]#

```



If the vGPU is not currently running, the `resident-on` parameter is not instantiated for the vGPU, and the `vgpu-param-get` operation returns:

```
<not in database>
```

5.3.3. Controlling the vGPU types enabled on specific physical GPUs

Physical GPUs support several vGPU types, as defined in [Supported GPUs](#) and the “pass-through” type that is used to assign an entire physical GPU to a VM (see [Using GPU pass-through](#)).

5.3.3.1. Controlling vGPU types enabled on specific physical GPUs by using XenCenter

To limit the types of vGPU that may be created on a specific physical GPU:

1. Open the server’s **GPU** tab in XenCenter.
2. Select the box beside one or more GPUs on which you want to limit the types of vGPU.
3. Select **Edit Selected GPUs**.

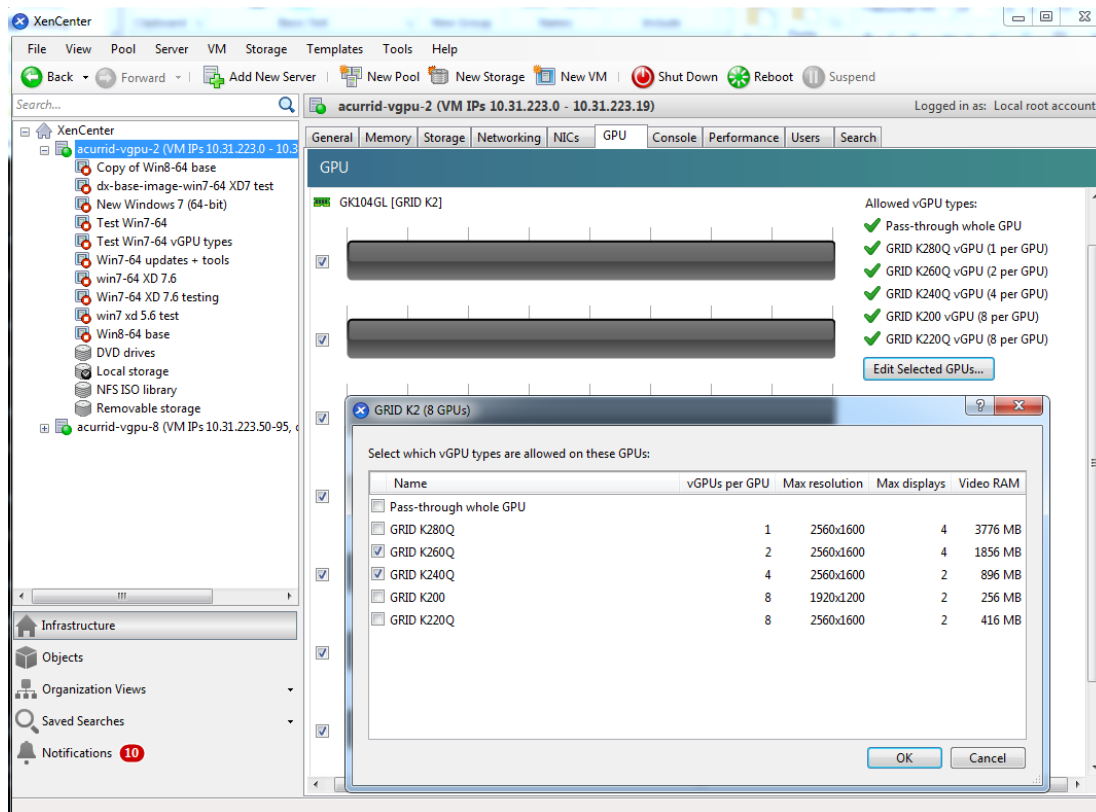


Figure 26 Editing a GPU's enabled vGPU types using XenCenter

5.3.3.2. Controlling vGPU types enabled on specific physical GPUs by using `xe`

The physical GPU's `pgpu` object's `enabled-vGPU-types` parameter controls the vGPU types enabled on specific physical GPUs.

To modify the `pgpu` object's `enabled-vGPU-types` parameter, use `xe pgpu-param-set`:

```
[root@xenserver ~]# xe pgpu-param-list uuid=f2607117-5b4c-d6cc-3900-00bf712e33f4
uuid ( RO)                : f2607117-5b4c-d6cc-3900-00bf712e33f4
  vendor-name ( RO)       : NVIDIA Corporation
  device-name ( RO)       : GK104GL [GRID K2]
  gpu-group-uuid ( RW)    : f4662c69-412c-abc5-6d02-f74b7703cccd
  gpu-group-name-label ( RO) : GRID K2 Socket 0
  host-uuid ( RO)        : d9eb9118-a5c5-49fb-970e-80e6a8f7ff98
  host-name-label ( RO)   : xenserver-vgx-test (VM IPs 10.31.223.0-49,
  dom0 .96, OOB .97)
  pci-id ( RO)           : 0000:08:00.0
  dependencies (SRO)     :
  other-config (MRW)     :
  supported-VGPU-types ( RO) : a724b756-d108-4c9f-0ea3-8f3a1553bfbf;
  63d9d912-3454-b020-8519-58dedb3b0117; 0bdf4715-e035-19c3-a57d-5ead20b3e5cd;
  a7838abe-0d73-1918-7d29-fd361d3e411f
  enabled-VGPU-types (SRW) : a724b756-d108-4c9f-0ea3-8f3a1553bfbf;
  63d9d912-3454-b020-8519-58dedb3b0117; 0bdf4715-e035-19c3-a57d-5ead20b3e5cd;
  a7838abe-0d73-1918-7d29-fd361d3e411f
  resident-VGPUs ( RO)   :
```

```
[root@xenserver-vgx-test ~]# xe pgpu-param-set uuid=f2607117-5b4c-d6cc-3900-00bf712e33f4 enabled-VGPU-types=a724b756-d108-4c9f-0ea3-8f3a1553bfbc
```

5.3.4. Creating vGPUs on specific physical GPUs

To precisely control allocation of vGPUs on specific physical GPUs, create separate GPU groups for the physical GPUs you wish to allocate vGPUs on. When creating a virtual GPU, create it on the GPU group containing the physical GPU you want it to be allocated on.

For example, to create a new GPU group for the physical GPU at PCI bus ID 0000:05:0.0, follow these steps:

1. Create the new GPU group with an appropriate name:

```
[root@xenserver ~]# xe gpu-group-create name-label="GRID K2 5:0.0"
585877ef-5a6c-66af-fc56-7bd525bdc2f6
[root@xenserver ~]#
```

2. Find the UUID of the physical GPU at 0000:05:0.0 that you want to assign to the new GPU group:

```
[root@xenserver ~]# xe pgpu-list pci-id=0000:05:00.0
uuid ( RO) : 7c1e3cff-1429-0544-df3d-bf8a086fb70a
  vendor-name ( RO): NVIDIA Corporation
  device-name ( RO): GK104GL [GRID K2]
  gpu-group-uuid ( RW): be825ba2-01d7-8d51-9780-f82cfaa64924

[root@xenserver ~]
```



The `pci-id` parameter passed to the `pgpu-list` command must be in the exact format shown, with the PCI domain fully specified (for example, 0000) and the PCI bus and devices numbers each being two digits (for example, 05:00.0).

3. Ensure that no vGPUs are currently operating on the physical GPU by checking the `resident-VGPUs` parameter:

```
[root@xenserver ~]# xe pgpu-param-get uuid=7c1e3cff-1429-0544-df3d-bf8a086fb70a param-name=resident-VGPUs
[root@xenserver ~]#
```

4. If any vGPUs are listed, shut down the VMs associated with them.
5. Change the `gpu-group-uuid` parameter of the physical GPU to the UUID of the newly-created GPU group:

```
[root@xenserver ~]# xe pgpu-param-set uuid=7c1e3cff-1429-0544-df3d-bf8a086fb70a gpu-group-uuid=585877ef-5a6c-66af-fc56-7bd525bdc2f6
[root@xenserver ~]#
```

Any vgpu object now created that specifies this GPU group UUID will always have its vGPUs created on the GPU at PCI bus ID 0000:05:0.0.

You can add more than one physical GPU to a manually-created GPU group - for example, to represent all the GPUs attached to the same CPU socket in a multi-socket server platform - but as for automatically-created GPU groups, all the physical GPUs in the group must be of the same type.

In XenCenter, manually-created GPU groups appear in the GPU type listing in a VM's GPU Properties. Select a GPU type within the group from which you wish the vGPU to be allocated:

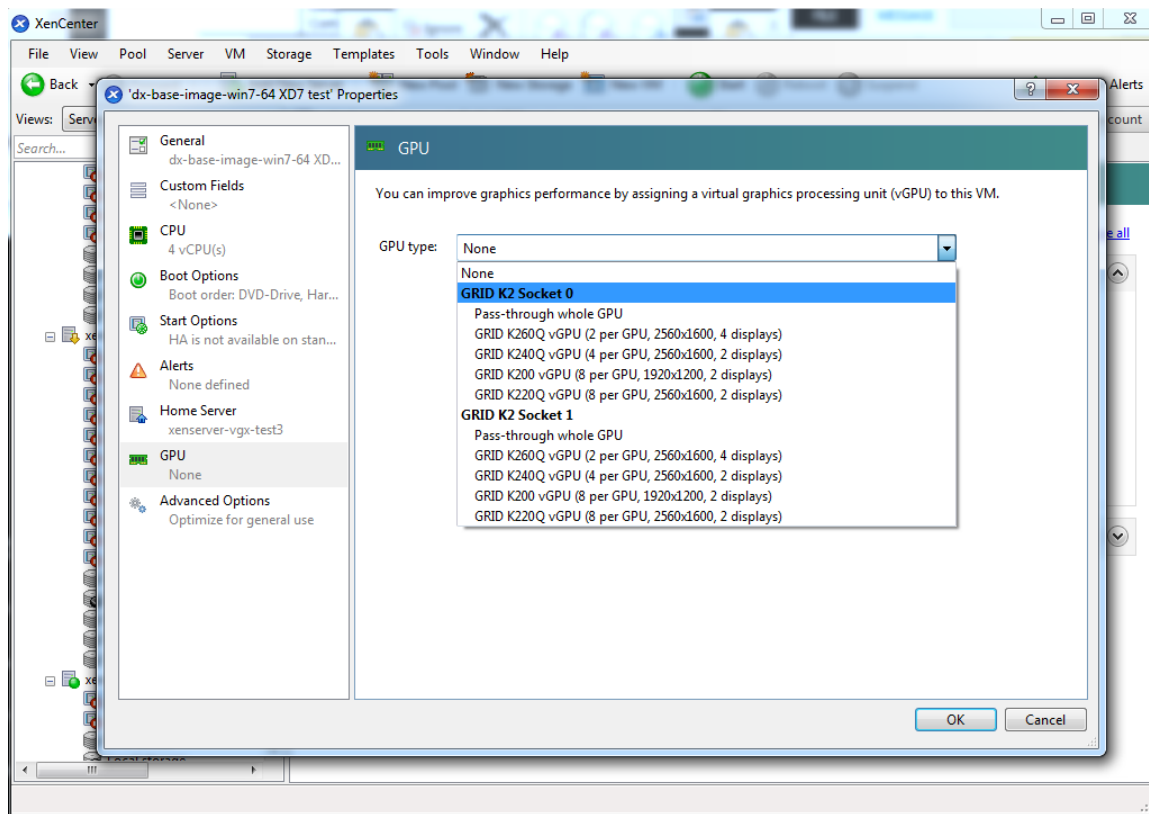


Figure 27 Using a custom GPU group within XenCenter

5.4. Cloning vGPU-enabled VMs

XenServer's fast-clone or copying feature can be used to rapidly create new VMs from a "golden" base VM image that has been configured with GRID vGPU, the NVIDIA driver, applications, and remote graphics software.

When a VM is cloned, any vGPU configuration associated with the base VM is copied to the cloned VM. Starting the cloned VM will create a vGPU instance of the same type as the original VM, from the same GPU group as the original vGPU.

5.4.1. Cloning a vGPU-enabled VM by using xe

To clone a vGPU-enabled VM from the dom0 shell, use `vm-clone`:

```
[root@xenserver ~]# xe vm-clone new-name-label="new-vm" vm="base-vm-name"
7f7035cb-388d-1537-1465-1857fb6498e7
[root@xenserver ~]#
```

5.4.2. Cloning a vGPU-enabled VM by using XenCenter

To clone a vGPU-enabled VM by using XenCenter, use the VM's **Copy VM** command as shown in [Figure 28](#).

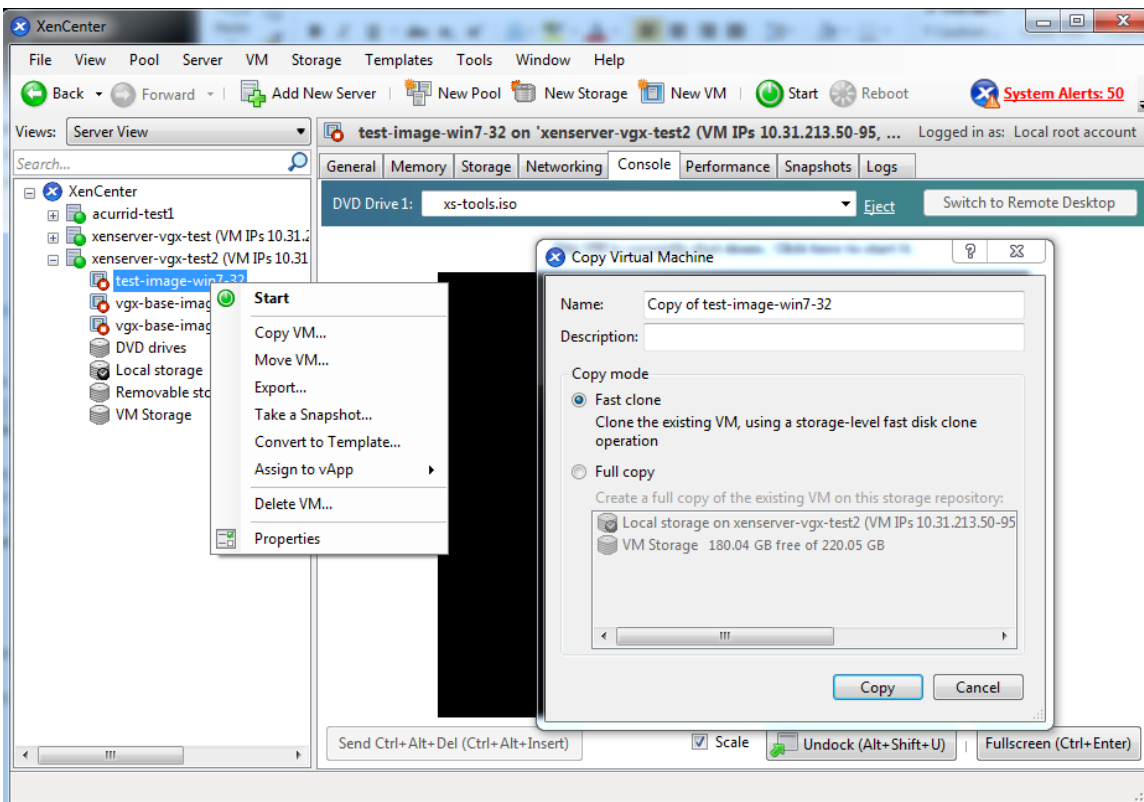


Figure 28 Cloning a VM using XenCenter

5.5. Using GPU pass-through

GPU pass-through is used to directly assign an entire physical GPU to one VM, bypassing the GRID Virtual GPU Manager. In this mode of operation, the GPU is accessed exclusively by the NVIDIA driver running in the VM to which it is assigned; the GPU is not shared among VMs.

GPU pass-through can be used in a server platform alongside GRID vGPU, with some restrictions:

- ▶ A physical GPU can host GRID vGPUs, or can be used for pass-through, but cannot do both at the same time.
- ▶ The performance of a physical GPU passed through to a VM cannot be monitored through XenCenter or `nvidia-smi` (see [Monitoring GPU performance](#)).
- ▶ Pass-through GPUs do not provide console output via XenCenter's **VM Console** tab. Use a remote graphics connection directly into the VM to access the VM's OS.

5.5.1. Configuring a VM for GPU pass-through by using XenCenter

Select the **Pass-through whole GPU** option as the GPU type in the VM's Properties:

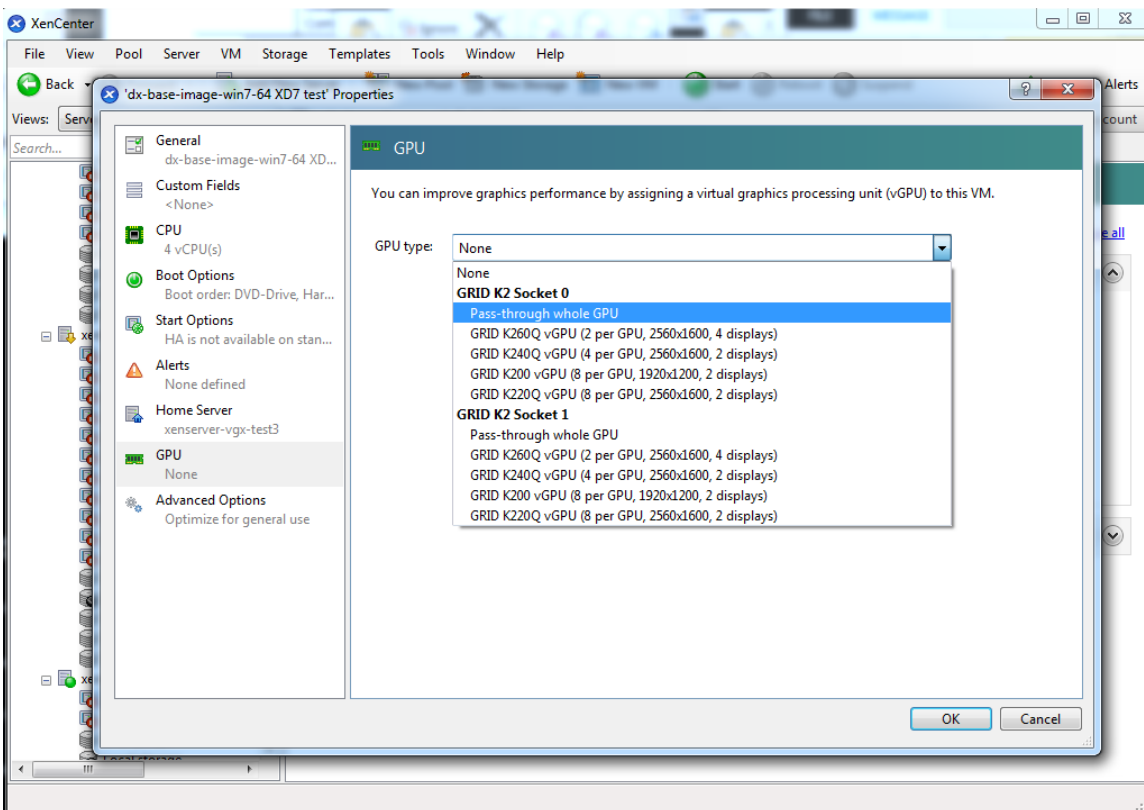


Figure 29 Using XenCenter to configure a pass-through GPU

5.5.2. Configuring a VM for GPU pass-through by using xe

Create a `vgpu` object with the `passthrough` vGPU type:

```
[root@xenserver ~]# xe vgpu-type-list model-name="passthrough"
uuid ( RO)                : fa50b0f0-9705-6c59-689e-ea62a3d35237
  vendor-name ( RO)       :
  model-name ( RO)       : passthrough
  framebuffer-size ( RO) : 0
```

```
[root@xenserver ~]# xe vgpu-create vm-uuid=753e77a9-e10d-7679-f674-65c078abb2eb  
vgpu-type-uuid=fa50b0f0-9705-6c59-689e-ea62a3d35237 gpu-group-  
uuid=585877ef-5a6c-66af-fc56-7bd525bdc2f6  
6aa530ec-8f27-86bd-b8e4-fe4fde8f08f9  
[root@xenserver ~]#
```



Caution Do not assign pass-through GPUs using the legacy `other-config:pci` parameter setting. This mechanism is not supported alongside the XenCenter UI and `xe vgpu` mechanisms, and attempts to use it may lead to undefined results.

Chapter 6.

XENSERVER PERFORMANCE TUNING

This chapter provides recommendations on optimizing performance for VMs running with GRID vGPU on Citrix XenServer.

6.1. XenServer tools

To get maximum performance out of a VM running on Citrix XenServer, regardless of whether you are using GRID vGPU, you must install Citrix XenServer tools within the VM. Without the optimized networking and storage drivers that the XenServer tools provide, remote graphics applications running on GRID vGPU will not deliver maximum performance.

6.2. Using remote graphics

GRID vGPU implements a console VGA interface that permits the VM's graphics output to be viewed through XenCenter's **console** tab. This feature allows the desktop of a vGPU-enabled VM to be visible in XenCenter before any NVIDIA graphics driver is loaded in the virtual machine, but it is intended solely as a management convenience; it only supports output of vGPU's primary display and isn't designed or optimized to deliver high frame rates.

To deliver high frames from multiple heads on vGPU, NVIDIA recommends that you install a high-performance remote graphics stack such as Citrix XenDesktop® with HDX 3D Pro remote graphics and, after the stack is installed, disable vGPU's console VGA.



Caution Using Windows Remote Desktop (RDP) to access Windows 7 or Windows Server 2008 VMs running GRID vGPU will cause the NVIDIA driver in the VM to be unloaded. GPU-accelerated DirectX, OpenGL, and the NVIDIA control panel will be unavailable whenever RDP is active. Installing a VNC server in the VM will allow for basic, low-performance remote access while leaving the NVIDIA driver loaded and

vGPU active, but for high performance remote accesses, use an accelerated stack such as XenDesktop.

6.2.1. Disabling console VGA

The console VGA interface in vGPU is optimized to consume minimal resources, but when a system is loaded with a high number of VMs, disabling the console VGA interface entirely may yield some performance benefit.

Once you have installed an alternate means of accessing a VM (such as XenDesktop or a VNC server), its vGPU console VGA interface can be disabled by specifying `disable_vnc=1` in the VM's `platform:vgpu_extra_args` parameter:

```
[root@xenserver ~]# xe vm-param-set uuid=e71afda4-53f4-3a1b-6c92-a364a7f619c2 platform:vgpu_extra_args="disable_vnc=1"
[root@xenserver ~]#
```

The new console VGA setting takes effect the next time the VM is started or rebooted. With console VGA disabled, the XenCenter console will display the Windows boot splash screen for the VM, but nothing beyond that.



Caution

If you disable console VGA before you have installed or enabled an alternate mechanism to access the VM (such as XenDesktop), you will not be able to interact with the VM once it has booted.

You can recover console VGA access by making one of the following changes:

- ▶ Removing the `vgpu_extra_args` key from the `platform` parameter
- ▶ Removing `disable_vnc=1` from the `vgpu_extra_args` key
- ▶ Setting `disable_vnc=0`, for example:

```
[root@xenserver ~]# xe vm-param-set uuid=e71afda4-53f4-3a1b-6c92-a364a7f619c2 platform:vgpu_extra_args="disable_vnc=0"
```

6.3. Allocation strategies

Strategies for pinning VM CPU cores to physical cores on Non-Uniform Memory Access (NUMA) platforms and for allocating VMs to CPUs and vGPUs to physical GPUs can improve performance for VMs running with GRID vGPU.

6.3.1. NUMA considerations

Server platforms typically implement multiple CPU sockets, with system memory and PCI Express expansion slots local to each CPU socket, as illustrated in [Figure 30](#):

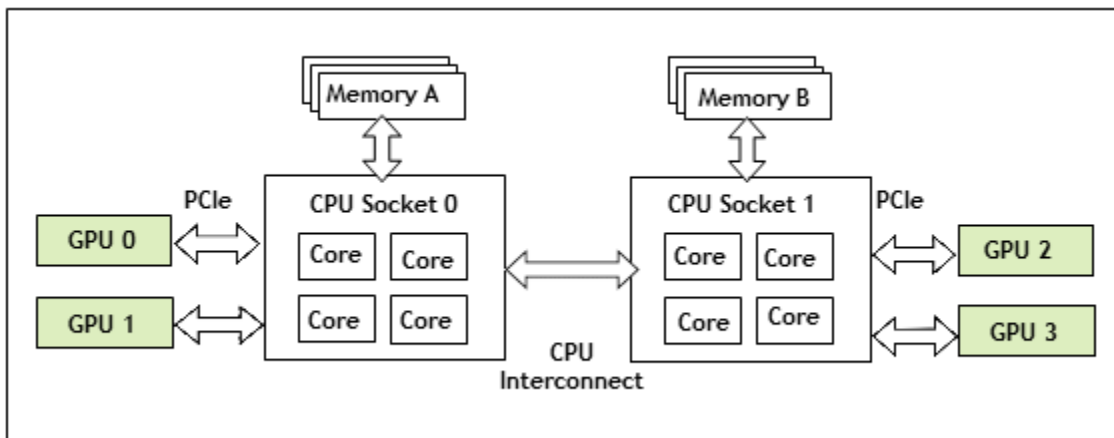


Figure 30 A NUMA server platform

These platforms are typically configured to operate in Non-Uniform Memory Access (NUMA) mode; physical memory is arranged sequentially in the address space, with all the memory attached to each socket appearing in a single contiguous block of addresses. The cost of accessing a range of memory from a CPU or GPU varies; memory attached to the same socket as the CPU or GPU is accessible at lower latency than memory on another CPU socket, because accesses to remote memory must additionally traverse the interconnect between CPU sockets.

To obtain best performance on a NUMA platform, NVIDIA recommends pinning VM vCPU cores to physical cores on the same CPU socket to which the physical GPU hosting the VM's vGPU is attached. For example, using as a reference, a VM with a vGPU allocated on physical GPU 0 or 1 should have its vCPUs pinned to CPU cores on CPU socket 0. Similarly, a VM with a vGPU allocated on physical GPU 2 or 3 should have its vCPUs pinned to CPU cores on socket 1.

See [Pinning VMs to a specific CPU socket and cores](#) for guidance on pinning vCPUs, and [How GPU locality is determined](#) for guidance on determining which CPU socket a GPU is connected to. [Controlling the vGPU types enabled on specific physical GPUs](#) describes how to precisely control which physical GPU is used to host a vGPU, by creating GPU groups for specific physical GPUs.

6.3.2. Maximizing performance

To maximize performance as the number of vGPU-enabled VMs on the platform increases, NVIDIA recommends adopting a *breadth-first* allocation: allocate new VMs on the least-loaded CPU socket, and allocate the VM's vGPU on an available, least-loaded, physical GPU connected via that socket.

XenServer creates GPU groups with a default allocation policy of *depth-first*. See [GPU allocation policy](#) for details on switching the allocation policy to breadth-first.



Due to vGPU's requirement that only one type of vGPU can run on a physical GPU at any given time, not all physical GPUs may be available to host the vGPU type required by the new VM.

Chapter 7.

TROUBLESHOOTING

This chapter describes basic troubleshooting steps for GRID vGPU on Citrix XenServer and VMware vSphere, and how to collect debug information when filing a bug report.

7.1. Known issues

Before troubleshooting or filing a bug report, review the release notes that accompany each driver release, for information about known issues with the current release, and potential workarounds.

7.2. Troubleshooting steps

If a vGPU-enabled VM fails to start, or doesn't display any output when it does start, follow these steps to narrow down the probable cause.

7.2.1. Verifying the NVIDIA kernel driver is loaded

1. Use the command that your hypervisor provides to verify that the kernel driver is loaded:

- ▶ On Citrix XenServer, use `lsmod`:

```
[root@xenserver ~]# lsmod|grep nvidia
nvidia          9604895  84
i2c_core        20294    2 nvidia,i2c_i801
[root@xenserver ~]#
```

- ▶ On VMware vSphere, use `vmkload_mod`:

```
[root@esxi:~] vmkload_mod -l | grep nvidia
nvidia          5      8420
```

2. If the `nvidia` driver is not listed in the output, check `dmesg` for any load-time errors reported by the driver (see [Examining NVIDIA kernel driver output](#)).
3. On XenServer, also use the `rpm -q` command to verify that the NVIDIA GPU Manager package is correctly installed (see [Installing the RPM package for XenServer](#)).

7.2.2. Verifying that `nvidia-smi` works

If the NVIDIA kernel driver is correctly loaded on the physical GPU, run `nvidia-smi` and verify that all physical GPUs not currently being used for GPU passthrough are listed in the output. For details on expected output, see [NVIDIA System Management Interface `nvidia-smi`](#).

If `nvidia-smi` fails to report the expected output, check `dmesg` for NVIDIA kernel driver messages.

7.2.3. Examining NVIDIA kernel driver output

Information and debug messages from the NVIDIA kernel driver are logged in kernel logs, prefixed with `NVRM` or `nvidia`.

Run `dmesg` on both Citrix XenServer and VMware vSphere and check for the `NVRM` and `nvidia` prefixes:

```
[root@xenserver ~]# dmesg | grep -E "NVRM|nvidia"
[  22.054928] nvidia: module license 'NVIDIA' taints kernel.
[  22.390414] NVRM: loading
[  22.829226] nvidia 0000:04:00.0: enabling device (0000 -> 0003)
[  22.829236] nvidia 0000:04:00.0: PCI INT A -> GSI 32 (level, low) -> IRQ 32
[  22.829240] NVRM: This PCI I/O region assigned to your NVIDIA device is
invalid:
[  22.829241] NVRM: BAR0 is 0M @ 0x0 (PCI:0000:00:04.0)
[  22.829243] NVRM: The system BIOS may have misconfigured your GPU.
```

7.2.4. Examining GRID Virtual GPU Manager messages

Information and debug messages from the GRID Virtual GPU Manager are logged to the hypervisor's log files, prefixed with `vmiop`.

7.2.4.1. Examining Citrix XenServer vGPU Manager messages

For Citrix XenServer, GRID Virtual GPU Manager messages are written to `/var/log/` messages.

Look in the `/var/log/messages` file for the `vmiop` prefix:

```
[root@xenserver ~]# grep vmiop /var/log/messages
Jun 19 09:17:44 xenserver-vgx-test2 fe: vgpu-2[14901]: vmiop_log: notice: vmiop-
env: guest_max_gpfn:0x10efff
Jun 19 09:17:44 xenserver-vgx-test2 fe: vgpu-2[14901]: vmiop_log: notice:
pluginconfig: /usr/share/nvidia/vgx/grid_k100.conf,disable_vnc=0,gpu-pci-
id=0000:88:00.0
Jun 19 09:17:44 xenserver-vgx-test2 fe: vgpu-2[14901]: vmiop_log: notice:
Loading Plugin0: libnvidia-vgx
Jun 19 09:17:45 xenserver-vgx-test2 fe: vgpu-2[14901]: vmiop_log: notice:
vgpu_type : vdi
Jun 19 09:17:45 xenserver-vgx-test2 fe: vgpu-2[14901]: vmiop_log: notice:
Framebuffer: 0x10000000
Jun 19 09:17:45 xenserver-vgx-test2 fe: vgpu-2[14901]: vmiop_log: notice:
Virtual Device Id: 0x0FE7:0x101E
```

```

Jun 19 09:17:45 xenserver-vgx-test2 fe: vgpu-2[14901]: vmiop_log: notice:
##### vGPU Manager Information: #####
Jun 19 09:17:45 xenserver-vgx-test2 fe: vgpu-2[14901]: vmiop_log: notice: Driver
Version: 367.106
Jun 19 09:17:45 xenserver-vgx-test2 fe: vgpu-2[14901]: vmiop_log: notice: VGX
Version: 4.3
Jun 19 09:17:45 xenserver-vgx-test2 fe: vgpu-2[14901]: vmiop_log: notice: Init
frame copy engine: syncing...
Jun 19 09:18:03 xenserver-vgx-test2 fe: vgpu-2[14901]: vmiop_log: notice:
##### Guest NVIDIA Driver Information: #####
Jun 19 09:18:03 xenserver-vgx-test2 fe: vgpu-2[14901]: vmiop_log: notice: Driver
Version: 370.12
Jun 19 09:18:03 xenserver-vgx-test2 fe: vgpu-2[14901]: vmiop_log: notice: VGX
Version: 4.3
[root@xenserver ~]#

```

7.2.4.2. Examining VMware vSphere vGPU Manager messages

For VMware vSphere, GRID Virtual GPU Manager messages are written to the `vmware.log` file in the guest VM's storage directory.

Look in the `vmware.log` file for the `vmiop` prefix:

```

[root@esxi:~] grep vmiop /vmfs/volumes/datastore1/win7-vgpu-test1/vmware.log
2017-06-16T14:02:21.275Z| vmx| I120: DICT pciPassthru0.virtualDev = "vmiop"
2017-06-16T14:02:21.344Z| vmx| I120: GetPluginPath testing /usr/lib64/vmware/
plugin/libvmx-vmiop.so
2017-06-16T14:02:21.344Z| vmx| I120: PluginLdr_LoadShared: Loaded shared plugin
libvmx-vmiop.so from /usr/lib64/vmware/plugin/libvmx-vmiop.so
2017-06-16T14:02:21.344Z| vmx| I120: VMIOP: Loaded plugin libvmx-
vmiop.so:VMIOP_InitModule
2017-06-16T14:02:21.359Z| vmx| I120: VMIOP: Initializing plugin vmiop-display
2017-06-16T14:02:21.365Z| vmx| I120: vmiop_log: gpu-pci-id : 0000:04:00.0
2017-06-16T14:02:21.365Z| vmx| I120: vmiop_log: vgpu_type : quadro
2017-06-16T14:02:21.365Z| vmx| I120: vmiop_log: Framebuffer: 0x74000000
2017-06-16T14:02:21.365Z| vmx| I120: vmiop_log: Virtual Device Id: 0x11B0:0x101B
2017-06-16T14:02:21.365Z| vmx| I120: vmiop_log: ##### vGPU Manager
Information: #####
2017-06-16T14:02:21.365Z| vmx| I120: vmiop_log: Driver Version: 367.106
2017-06-16T14:02:21.365Z| vmx| I120: vmiop_log: VGX Version: 4.3
2017-06-16T14:02:21.445Z| vmx| I120: vmiop_log: Init frame copy engine:
syncing...
2017-06-16T14:02:37.031Z| vthread-12| I120: vmiop_log: ##### Guest NVIDIA
Driver Information: #####
2017-06-16T14:02:37.031Z| vthread-12| I120: vmiop_log: Driver Version: 370.12
2017-06-16T14:02:37.031Z| vthread-12| I120: vmiop_log: VGX Version: 4.3
2017-06-16T14:02:37.093Z| vthread-12| I120: vmiop_log: Clearing BAR1 mapping
2017-06-19T23:39:55.726Z| vmx| I120: VMIOP: Shutting down plugin vmiop-display
[root@esxi:~]

```

7.3. Capturing configuration data for filing a bug report

When filing a bug report with NVIDIA, capture relevant configuration data from the platform exhibiting the bug in one of the following ways:

- ▶ On any supported hypervisor, run `nvidia-bug-report.sh`.
- ▶ On Citrix XenServer, create a XenServer server status report.

7.3.1. Capturing configuration data by running `nvidia-bug-report.sh`

The `nvidia-bug-report.sh` script captures debug information into a gzip-compressed log file on the server.

Run `nvidia-bug-report.sh` from Citrix XenServer's dom0 shell or VMware ESXi's host shell.

This example runs `nvidia-bug-report.sh` on Citrix XenServer, but the procedure is the same on vSphere ESXi.

```
[root@xenserver ~]# nvidia-bug-report.sh

nvidia-bug-report.sh will now collect information about your
system and create the file 'nvidia-bug-report.log.gz' in the current
directory. It may take several seconds to run. In some
cases, it may hang trying to capture data generated dynamically
by the Linux kernel and/or the NVIDIA kernel module. While
the bug report log file will be incomplete if this happens, it
may still contain enough data to diagnose your problem.

For Xen open source/XCP users, if you are reporting a domain issue,
please run: nvidia-bug-report.sh --domain-name <"domain_name">

Please include the 'nvidia-bug-report.log.gz' log file when reporting
your bug via the NVIDIA Linux forum (see devtalk.nvidia.com)
or by sending email to 'linux-bugs@nvidia.com'.

Running nvidia-bug-report.sh...

If the bug report script hangs after this point consider running with
--safe-mode command line argument.

complete

[root@xenserver ~]#
```

7.3.2. Capturing configuration data by creating a XenServer status report

1. In XenCenter, from the **Tools** menu, choose **Server Status Report**.
2. Select the XenServer instance from which you want to collect a status report.
3. Select the data to include in the report.
4. To include GRID vGPU debug information, select **NVIDIA-logs** in the **Report Content Item** list.
5. Generate the report.

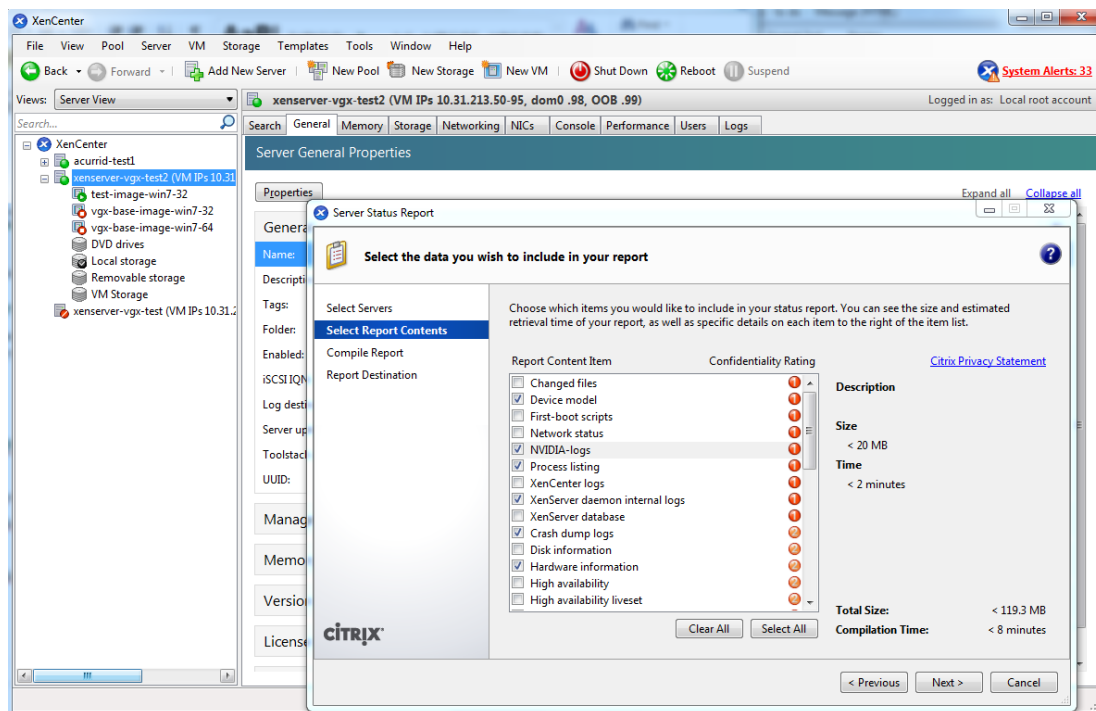


Figure 31 Including NVIDIA logs in a XenServer status report

Appendix A.

XENSERVER BASICS

This appendix outlines basic operations on XenServer that are needed in order to install and configure GRID vGPU, and optimize XenServer operation with vGPU.

A.1. Opening a dom0 shell

Most configuration commands must be run in a command shell on XenServer's dom0. You can open a shell on XenServer's dom0 in any of the following ways:

- ▶ Using the console window in XenCenter
- ▶ Using a standalone secure shell (SSH) client

A.1.1. Accessing the dom0 shell through XenCenter

1. In the left pane of the **XenCenter** window, select the XenServer host that you want to connect to.
2. Click on the **Console** tab to open the XenServer's console.
3. Press **Enter** to start a shell prompt.

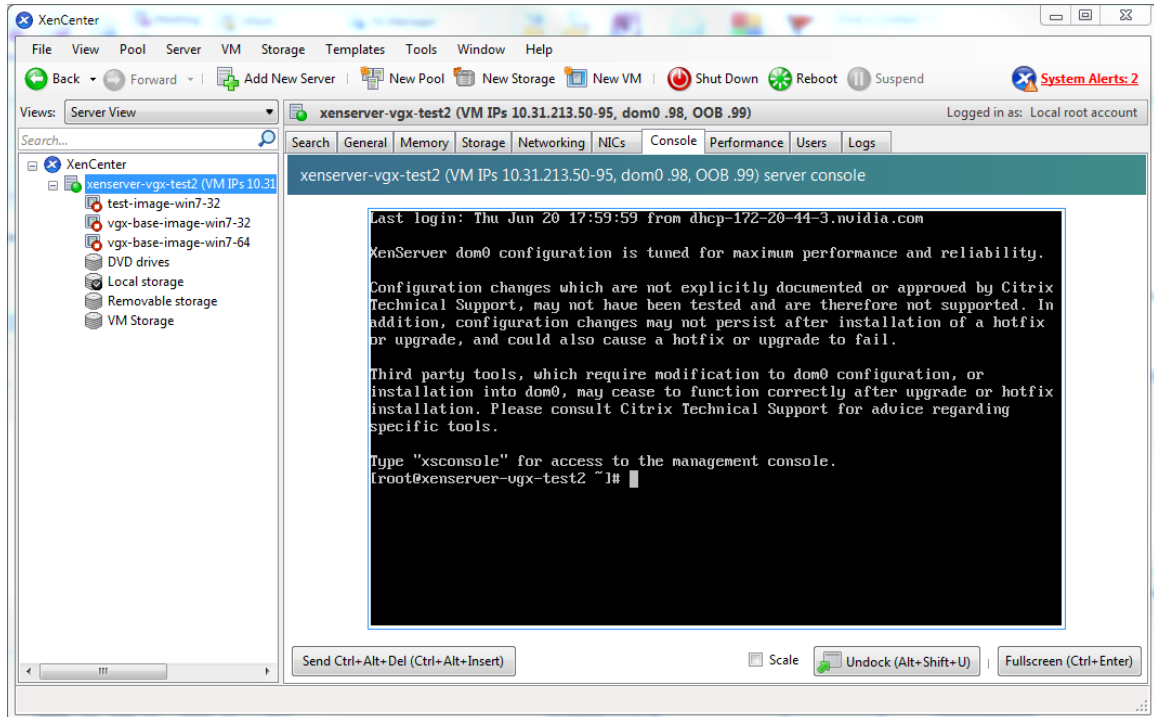


Figure 32 Connecting to the dom0 shell by using XenCenter

A.1.2. Accessing the dom0 shell through an SSH client

1. Ensure that you have an SSH client suite such as PuTTY on Windows, or the SSH client from OpenSSH on Linux.
2. Connect your SSH client to the management IP address of the XenServer host.
3. Log in as the root user.

A.2. Copying files to dom0

You can easily copy files to and from XenServer dom0 in any of the following ways:

- ▶ Using a Secure Copy Protocol (SCP) client
- ▶ Using a network-mounted file system

A.2.1. Copying files by using an SCP client

The SCP client to use for copying files to dom0 depends on where you are running the client from.

- ▶ If you are running the client from dom0, use the secure copy command `scp`.

The `scp` command is part of the SSH suite of applications. It is implemented in dom0 and can be used to copy from a remote SSH-enabled server:

```
[root@xenserver ~]# scp root@10.31.213.96:/tmp/somefile .
```

```
The authenticity of host '10.31.213.96 (10.31.213.96)' can't be established.
RSA key fingerprint is 26:2d:9b:b9:bf:6c:81:70:36:76:13:02:c1:82:3d:3c.
Are you sure you want to continue connecting (yes/no)? yes
Warning: Permanently added '10.31.213.96' (RSA) to the list of known hosts.
root@10.31.213.96's password:
somefile                               100% 532      0.5KB/s   00:00
[root@xenserver ~]#
```

- ▶ If you are running the client from Windows, use the `pscp` program.

The `pscp` program is part of the PuTTY suite and can be used to copy files from a remote Windows system to XenServer:

```
C:\Users\nvidia>pscp somefile root@10.31.213.98:/tmp
root@10.31.213.98's password:
somefile                               | 80 kB | 80.1 kB/s | ETA: 00:00:00 | 100%
C:\Users\nvidia>
```

A.2.2. Copying files by using a CIFS-mounted file system

You can copy files to and from a CIFS/SMB file share by mounting the share from `dom0`.

The following example shows how to mount a network share `\myserver.example.com\myshare` at `/mnt/myshare` on `dom0` and how to copy files to and from the share. The example assumes that the file share is part of an Active Directory domain called `example.com` and that user `myuser` has permissions to access the share.

1. Create the directory `/mnt/myshare` on `dom0`.

```
[root@xenserver ~]# mkdir /mnt/myshare
```

2. Mount the network share `\\myserver.example.com\myshare` at `/mnt/myshare` on `dom0`.

```
[root@xenserver ~]# mount -t cifs -o
username=myuser,workgroup=example.com //myserver.example.com/myshare /mnt/
myshare
Password:
[root@xenserver ~]#
```

3. When prompted for a password, enter the password for `myuser` in the `example.com` domain.
4. After the share has been mounted, copy files to and from the file share by using the `cp` command to copy them to and from `/mnt/myshare`:

```
[root@xenserver ~]# cp /mnt/myshare/NVIDIA-vGPU-
xenserver-7.0-367.106.x86_64.rpm .
[root@xenserver ~]#
```

A.3. Determining a VM's UUID

You can determine a virtual machine's UUID in any of the following ways:

- ▶ Using the `xe vm-list` command in a `dom0` shell
- ▶ Using XenCenter

A.3.1. Determining a VM's UUID by using `xe vm-list`

Use the `xe vm-list` command to list all VMs and their associated UUIDs or to find the UUID of a specific named VM.

- ▶ To list all VMs and their associated UUIDs, use `xe vm-list` without any parameters:

```
[root@xenserver ~]# xe vm-list
uuid ( RO)          : 6b5585f6-bd74-2e3e-0e11-03b9281c3ade
  name-label ( RW) : vgx-base-image-win7-64
  power-state ( RO) : halted

uuid ( RO)          : fa3d15c7-7e88-4886-c36a-cdb23ed8e275
  name-label ( RW) : test-image-win7-32
  power-state ( RO) : halted

uuid ( RO)          : 501bb598-a9b3-4afc-9143-ff85635d5dc3
  name-label ( RW) : Control domain on host: xenserver
  power-state ( RO) : running

uuid ( RO)          : 8495adf7-be9d-eee1-327f-02e4f40714fc
  name-label ( RW) : vgx-base-image-win7-32
  power-state ( RO) : halted
```

- ▶ To find the UUID of a specific named VM, use the `name-label` parameter to `xe vm-list`:

```
[root@xenserver ~]# xe vm-list name-label=test-image-win7-32
uuid ( RO)          : fa3d15c7-7e88-4886-c36a-cdb23ed8e275
  name-label ( RW) : test-image-win7-32
  power-state ( RO) : halted
```

A.3.2. Determining a VM's UUID by using XenCenter

1. In the left pane of the **XenCenter** window, select the VM whose UUID you want to determine.
2. In the right pane of the **XenCenter** window, click the **General** tab.

The UUID is listed in the VM's General Properties.

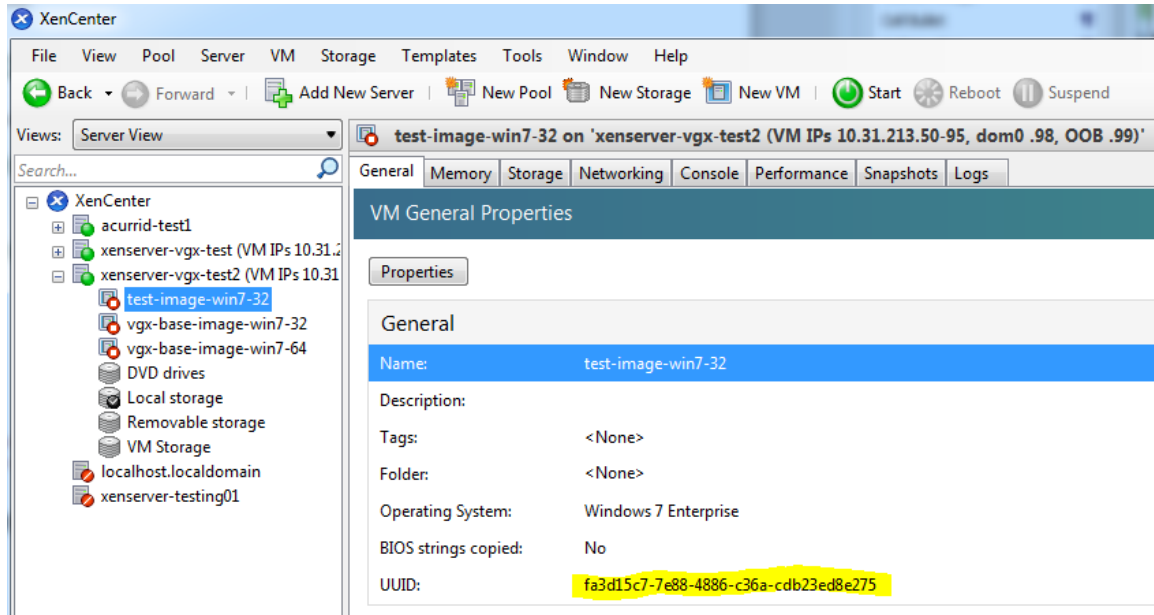


Figure 33 Using XenCenter to determine a VM's UUID

A.4. Using more than two vCPUs with Windows client VMs

Windows client operating systems support a maximum of two CPU sockets. When allocating vCPUs to virtual sockets within a guest VM, XenServer defaults to allocating one vCPU per socket. Any more than two vCPUs allocated to the VM won't be recognized by the Windows client OS.

To ensure that all allocated vCPUs are recognized, set `platform:cores-per-socket` to the number of vCPUs that are allocated to the VM:

```
[root@xenserver ~]# xe vm-param-set uuid=vm-uuid platform:cores-per-socket=4
VCPUs-max=4 VCPUs-at-startup=4
```

`vm-uuid` is the VM's UUID, which you can obtain as explained in [Determining a VM's UUID](#).

A.5. Pinning VMs to a specific CPU socket and cores

1. Use `xe host-cpu-info` to determine the number of CPU sockets and logical CPU cores in the server platform.
In this example the server implements 32 logical CPU cores across two sockets:

```
[root@xenserver ~]# xe host-cpu-info
cpu_count : 32
```

```

socket_count: 2
  vendor: GenuineIntel
  speed: 2600.064
  modelname: Intel(R) Xeon(R) CPU E5-2670 0 @ 2.60GHz
  family: 6
  model: 45
  stepping: 7
  flags: fpu de tsc msr pae mce cx8 apic sep mtrr mca
cmov pat clflush acpi mmx fxsr sse sse2 ss ht nx constant_tsc nonstop_tsc
aperfmpperf pni pclmulqdq vmx est ssse3 sse4_1 sse4_2 x2apic popcnt aes
hypervisor ida arat tpr_shadow vnmi flexpriority ept vpid
  features: 17bee3ff-bfebfbff-00000001-2c100800
  features_after_reboot: 17bee3ff-bfebfbff-00000001-2c100800
  physical_features: 17bee3ff-bfebfbff-00000001-2c100800
  maskable: full

```

2. Set `VCPUs-params:mask` to pin a VM's vCPUs to a specific socket or to specific cores within a socket.

This setting persists over VM reboots and shutdowns. In a dual socket platform with 32 total cores, cores 0-15 are on socket 0, and cores 16-31 are on socket 1.

In the examples that follow, *vm-uuid* is the VM's UUID, which you can obtain as explained in [Determining a VM's UUID](#).

- ▶ To restrict a VM to only run on socket 0, set the mask to specify cores 0-15:

```
[root@xenserver ~]# xe vm-param-set uuid=vm-uuid VCPUs-params:mask=0,1,2,3,4,5,6,7,8,9,10,11,12,13,14,15
```

- ▶ To restrict a VM to only run on socket 1, set the mask to specify cores 16-31:

```
[root@xenserver ~]# xe vm-param-set uuid=vm-uuid VCPUs-params:mask=16,17,18,19,20,21,22,23,24,25,26,27,28,29,30,31
```

- ▶ To pin vCPUs to specific cores within a socket, set the mask to specify the cores directly:

```
[root@xenserver ~]# xe vm-param-set uuid=vm-uuid VCPUs-params:mask=16,17,18,19
```

3. Use `xl vcpu-list` to list the current assignment of vCPUs to physical CPUs:

```
[root@xenserver ~]# xl vcpu-list
```

Name	ID	VCPU	CPU	State	Time (s)	CPU
Affinity						
Domain-0	0	0	25	-b-	9188.4	any cpu
Domain-0	0	1	19	r--	8908.4	any cpu
Domain-0	0	2	30	-b-	6815.1	any cpu
Domain-0	0	3	17	-b-	4881.4	any cpu
Domain-0	0	4	22	-b-	4956.9	any cpu
Domain-0	0	5	20	-b-	4319.2	any cpu
Domain-0	0	6	28	-b-	5720.0	any cpu
Domain-0	0	7	26	-b-	5736.0	any cpu
test-image-win7-32	34	0	9	-b-	17.0	4-15
test-image-win7-32	34	1	4	-b-	13.7	4-15

A.6. Changing dom0 vCPU Default configuration

By default, dom0 vCPUs are configured as follows:

- ▶ The number of vCPUs assigned to dom0 is 8.

- ▶ The dom0 shell's vCPUs are unpinned and able to run on any physical CPU in the system.

A.6.1. Changing the number of dom0 vCPUs

The default number of vCPUs assigned to dom0 is 8.

1. Modify the `dom0_max_vcpus` parameter in the Xen boot line.

For example:

```
[root@xenserver ~]# /opt/xensource/libexec/xen-commandline --set-xen
dom0_max_vcpus=4
```

2. After applying this setting, reboot the system for the setting to take effect by doing one of the following:
 - ▶ Run the following command:

```
shutdown -r
```

- ▶ Reboot the system from XenCenter.

A.6.2. Pinning dom0 vCPUs

By default, dom0's vCPUs are unpinned, and able to run on any physical CPU in the system.

1. To pin dom0 vCPUs to specific physical CPUs, use `xl vcpu-pin`.

For example, to pin dom0's vCPU 0 to physical CPU 18, use the following command:

```
[root@xenserver ~]# xl vcpu-pin Domain-0 0 18
```

CPU pinnings applied this way take effect immediately but do not persist over reboots.

2. To make settings persistent, add `xl vcpu-pin` commands into `/etc/rc.local`.

For example:

```
xl vcpu-pin 0 0 0-15
xl vcpu-pin 0 1 0-15
xl vcpu-pin 0 2 0-15
xl vcpu-pin 0 3 0-15
xl vcpu-pin 0 4 16-31
xl vcpu-pin 0 5 16-31
xl vcpu-pin 0 6 16-31
xl vcpu-pin 0 7 16-31
```

A.7. How GPU locality is determined

As noted in [NUMA considerations](#), current multi-socket servers typically implement PCIe expansion slots local to each CPU socket and it is advantageous to pin VMs to the same socket that their associated physical GPU is connected to.

For current Intel platforms, CPU socket 0 typically has its PCIe root ports located on bus 0, so any GPU below a root port located on bus 0 is connected to socket 0. CPU socket 1

has its root ports on a higher bus number, typically bus 0x20 or bus 0x80 depending on the specific server platform.

Notice

ALL NVIDIA DESIGN SPECIFICATIONS, REFERENCE BOARDS, FILES, DRAWINGS, DIAGNOSTICS, LISTS, AND OTHER DOCUMENTS (TOGETHER AND SEPARATELY, "MATERIALS") ARE BEING PROVIDED "AS IS." NVIDIA MAKES NO WARRANTIES, EXPRESSED, IMPLIED, STATUTORY, OR OTHERWISE WITH RESPECT TO THE MATERIALS, AND EXPRESSLY DISCLAIMS ALL IMPLIED WARRANTIES OF NONINFRINGEMENT, MERCHANTABILITY, AND FITNESS FOR A PARTICULAR PURPOSE.

Information furnished is believed to be accurate and reliable. However, NVIDIA Corporation assumes no responsibility for the consequences of use of such information or for any infringement of patents or other rights of third parties that may result from its use. No license is granted by implication of otherwise under any patent rights of NVIDIA Corporation. Specifications mentioned in this publication are subject to change without notice. This publication supersedes and replaces all other information previously supplied. NVIDIA Corporation products are not authorized as critical components in life support devices or systems without express written approval of NVIDIA Corporation.

HDMI

HDMI, the HDMI logo, and High-Definition Multimedia Interface are trademarks or registered trademarks of HDMI Licensing LLC.

OpenCL

OpenCL is a trademark of Apple Inc. used under license to the Khronos Group Inc.

Trademarks

NVIDIA and the NVIDIA logo are trademarks or registered trademarks of NVIDIA Corporation in the U.S. and other countries. Other company and product names may be trademarks of the respective companies with which they are associated.

Copyright

© 2013-2017 NVIDIA Corporation. All rights reserved.