

PGI[®] COMPILERS & TOOLS

PGI VISUAL FORTRAN INSTALLATION GUIDE

Version 2019

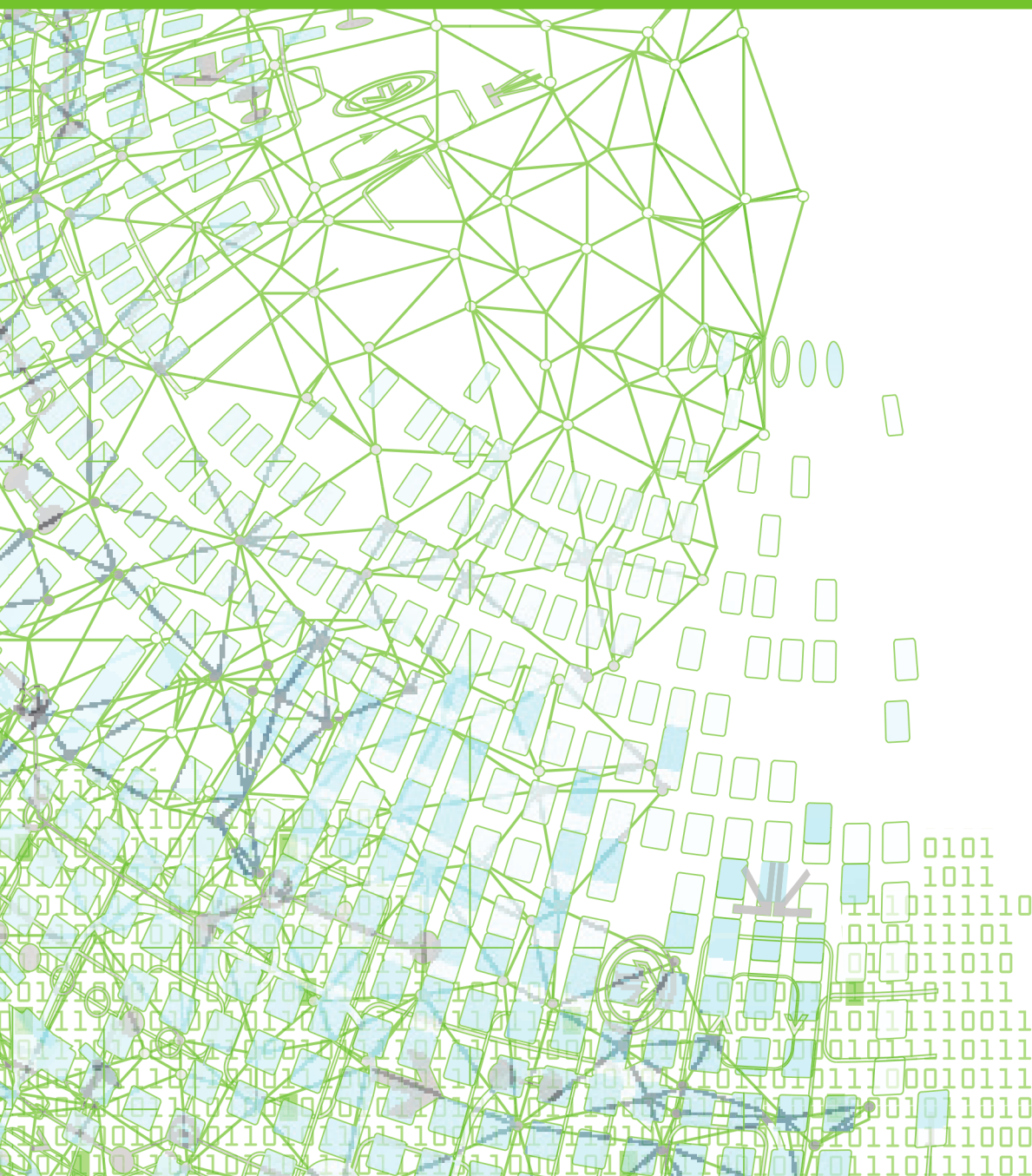


TABLE OF CONTENTS

Chapter 1. Introduction.....	1
1.1. Product Overview.....	1
1.2. Microsoft Build Tools.....	2
1.3. Terms and Definitions.....	2
1.4. Supported Processors.....	2
1.4.1. Supported Processors.....	2
1.5. Supported Operating Systems.....	3
1.6. Product Support.....	3
Chapter 2. Installation Overview.....	5
2.1. Before You Begin.....	5
Chapter 3. Licensing.....	7
3.1. Licensing Terminology.....	7
3.2. Licensing Keys.....	8
3.2.1. Licensing Key Options.....	8
3.2.2. Licensing Key Capabilities.....	8
3.2.3. Licensing Key Comparisons.....	9
3.2.4. Licensing Key Dependencies.....	9
3.3. The FlexNet License Manager.....	9
3.4. PGI Licensing Considerations.....	10
3.5. License Support.....	11
Chapter 4. Installing PGI Visual Fortran.....	12
4.1. Prerequisites.....	12
4.2. Basic PVF Installation.....	12
4.3. Manual PVF Licensing.....	13
Chapter 5. PVF Multi-User Installation and Licensing.....	17
5.1. Scenario A - License Server (Windows) with PVF Installed.....	18
5.2. Scenario B - License Server (Windows) without PVF Installed.....	18
5.3. Scenario C - License Server (Linux).....	19
5.4. PVF Installation on Client.....	19
Chapter 6. Use Licensing Environment Variables.....	21
6.1. PGROUPD_LICENSE_FILE.....	21
6.2. FLEXLM_BATCH.....	21
Chapter 7. PGI Visual Fortran Default Directory Structure.....	23
Chapter 8. Common Installation Issues.....	24
8.1. Windows Firewall and PVF Debugging.....	24
8.2. Troubleshooting.....	25
8.3. Installation Errors to Ignore.....	26
Chapter 9. Co-installation.....	27
Chapter 10. Uninstalling PVF.....	28
Chapter 11. Contact Information.....	29

LIST OF FIGURES

Figure 1 PVF Installation Overview	6
Figure 2 PVF Installation Errors to Ignore	26

LIST OF TABLES

Table 1	Processors Supported by PGI 2019	2
Table 2	Operating Systems and Features Supported in PVF Release 2019	3
Table 3	License Key Comparisons	9

Chapter 1.

INTRODUCTION

Welcome to PGI Visual Fortran[®], a set of Fortran compilers and development tools for Windows integrated with Microsoft Visual Studio.

PGI Visual Fortran (PVF[®]) is licensed using FLEXnet, the flexible license management system from Flexera Software*. Instructions for obtaining a permanent license are included in your order confirmation. More information is available in [Licensing](#).

1.1. Product Overview

PVF is integrated with Microsoft Visual Studio 2015. Throughout this document, "PGI Visual Fortran" refers to PVF integrated with any of the supported versions of Visual Studio. Similarly, "Microsoft Visual Studio" refers to any supported version of Visual Studio. When it is necessary to distinguish among the products, the document does so.

Single-user node-locked and multi-user network floating license options are available for both products. When a node-locked license is used, one user at a time can use PVF on the single system where it is installed. When a network floating license is used, a system is selected as the server and it controls the licensing, and users from any of the client machines connected to the license server can use PVF. Thus multiple users can simultaneously use PVF, up to the maximum number of users allowed by the license.

PVF provides a complete Fortran development environment fully integrated with Microsoft Visual Studio. It includes a custom Fortran Build Engine that automatically derives build dependencies, Fortran extensions to the Visual Studio editor, a custom PGI Debug Engine integrated with the Visual Studio debugger, PGI Fortran compilers, and PVF-specific property pages to control the configuration of all of these.

Release 2019 of PGI Visual Fortran includes the following components:

- ▶ PGFORTRAN OpenMP and auto-parallelizing Fortran 90/95/2003 compiler.
- ▶ PGF77 OpenMP and auto-parallelizing FORTRAN 77 compiler.
- ▶ PVF Visual Studio integration components.

1.2. Microsoft Build Tools

PVF on all Windows systems includes the Microsoft Open Tools. These files are required in addition to the files Microsoft provides in the Windows SDK.

1.3. Terms and Definitions

This document contains a number of terms and definitions with which you may or may not be familiar. If you encounter an unfamiliar term in these notes, please refer to the [PGI online glossary](http://pgicompilers.com/definitions) located at pgicompilers.com/definitions.

These two terms are used throughout the documentation to reflect groups of processors:

Intel 64

64-bit Intel x86-64 CPUs including Intel Core processors, Intel Xeon Nehalem, Sandy Bridge, Ivy Bridge, Haswell, Broadwell and Skylake processors, and Intel Xeon Phi Knights Landing.

AMD64

64-bit AMD™ x86-64 CPUs including Opteron and EPYC processors.

1.4. Supported Processors

PGI Visual Fortran is supported on Windows operating systems running on x64 compatible processors. The [Supported Processors](#) table lists the processors on which Release 2019 of PGI Visual Fortran is supported. The table also includes the CPUs available and supported in dual-core versions.

PVF uses the Fortran | Target Processors property to generate executables that utilize features and optimizations specific to a given CPU and operating system environment. You can accomplish the same results from the command line using the option `-tp <target>`.

1.4.1. Supported Processors

Table 1 Processors Supported by PGI 2019

Brand	CPU	Target Processor (-tp <target> [,target...])
AMD		
	Zen architecture (EPYC, Ryzen)	zen
	Opteron Piledriver	piledriver
	Opteron Bulldozer	bulldozer
Intel		

Brand	CPU	Target Processor (-tp <target> [,target...])
	Skylake	skylake
	Knights Landing	knl
	Haswell	haswell
	Sandy Bridge	sandybridge
Generic		
	Generic	px

1.5. Supported Operating Systems

PVF 2019 is supported on any operating system on which Visual Studio is supported. Visual Studio 2015 has its own installation requirements. To install VS 2015, certain operating systems are required. The following table lists the operating systems supported by PVF and the minimum additional requirements for VS 2015. If your operating system is newer than any of those listed in the following table, the installation may still be successful.



See the table of in the Compatibility and Installation section of the PGI website, www.pgroup.com/products/index.htm?tab=compat#windows_info, for the most up-to-date list.

Table 2 Operating Systems and Features Supported in PVF Release 2019

Microsoft OS	VS 2015
Windows 10	Any
Windows 8.1	Any
Windows Server 2012	Any
Windows 7	Any
Windows Server 2008 R2	Any

1.6. Product Support

All new PGI licenses include free PGI Support Service during the money-back guarantee period.

The PGI Support Service provides access to technical support and other benefits including:

- ▶ Technical support requests may be sent in a number of ways:

- ▶ Faxed to +1-503-682-2637
- ▶ By using the [online support request form](https://pgcompilers.com/support-request) located at pgcompilers.com/support-request.

Phone support is not currently available.

- ▶ Release upgrades for licensed product(s) at no additional cost, except for any administrative fee that may apply.
- ▶ Notification by email when maintenance releases occur and are available for download and installation.
- ▶ Full license fee credits on Product upgrades, except for any administrative fee that may apply. "Product upgrades" refer to exchanging one Product license for a more expensive Product license, and is not the same as a Version or Release upgrade previously referenced.
- ▶ Full license fee credits on user-count upgrades, except for any administrative fee that may apply.



Important To continue receiving these benefits after the money-back guarantee period days, you can purchase an extension to your PGI Support Service. Extensions are available in yearly increments.

Contact sales@pgroup.com if you would like information regarding the support service for the PGI products you have purchased.

Chapter 2.

INSTALLATION OVERVIEW

There are a number of steps required to successfully install PGI Visual Fortran. This document provides the details related to these steps.

- ▶ [Licensing](#), including successfully generating either a trial or a permanent license.
- ▶ [Installing PGI Visual Fortran](#) using single-user, node-locked licensing.
- ▶ [Multi-User Installation and Licensing](#) using multi-user, network floating licensing.
- ▶ [Using Licensing Environment Variables](#), which includes how to use the optional FLEX environment variables.
- ▶ Familiarity with the PGI Visual Fortran [default directory structure](#) of the installed product.
- ▶ Awareness of [common installation issues](#).
- ▶ [Co-installing](#) PGI Visual Fortran with PGI command-line products.
- ▶ [Uninstalling](#) PGI Visual Fortran.

2.1. Before You Begin

Before you begin the installation, it is essential that you understand the flow of the installation process, illustrated in the following diagram.



Figure 1 PVF Installation Overview

For more complete information on these steps and the specific actions to take for your operating system, refer to the remainder of this document.

Chapter 3.

LICENSING

PGI Visual Fortran uses the FlexNet Publisher (FNP) license management system from [Flexera Software](#).

PGI software licensing uses the FlexNet Publisher (FNP) license management system from [Flexera Software](#).

3.1. Licensing Terminology

The PGI compilers and tools are license-managed. Before discussing licensing, it is useful to have common terminology.

- ▶ **License** – the right to use PGI compilers and tools as defined by the End-user License Agreement (EULA), this is a legal agreement between NVIDIA and PGI end-users. PGI Professional (for-fee, perpetual) licenses are identified by a Product Identification Number (PIN - see below). You can find a copy of the EULA on the [PGI website](#), pgicompile.com/LICENSE, and in the `$PGI/<platform>/<rel_number>/doc` directory of every PGI software installation.
- ▶ **License keys** – ASCII text strings that enable use of the PGI software and are intended to enforce the terms of the License. For PGI Professional, License keys are generated by each PGI end-user on the PGI website using a unique hostid and are typically stored in a file called `license.dat` that is accessible to the systems for which the PGI software is licensed.
- ▶ **PIN** – Product Identification Number, a unique 6-digit number associated with a PGI Professional license. This PIN is included in your order confirmation. The PIN can also be found in your license key file after **VENDOR_STRING=**.
- ▶ **PIN tie code** – A unique 16-digit number associated with each license (PIN) that allows others to "tie" that license to their [PGI user account](#), pgicompile.com/account for administrative purposes. PGI Professional licensees can use their PIN tie code to share license administration capabilities with others in their organization.

3.2. Licensing Keys

PGI Visual Fortran includes the PGI License Setup tool to help automate your license retrieval and installation process. You use this tool to obtain either a trial or a permanent license key.

3.2.1. Licensing Key Options

There are two types of license keys for PGI Visual Fortran: starter and permanent.

Starter License Keys

Time-limited evaluation license keys bundled with most releases or provided on request by PGI. Starter license keys do not use FlexNet daemons.

Permanent License Keys

Purchased PGI licenses allow users to create *permanent* license keys. Permanent license keys are perpetual, meaning they remain valid indefinitely with eligible versions of PGI software. Permanent license keys require FlexNet license daemons and are available in either node-locked (local system only) or network floating (server) configurations:

- ▶ **Node-locked**, created by a user. FlexNet daemons are installed on the same system as the compilers, and use is restricted to that system. Any user on the system is allowed to use the compilers, but only a single user at a time.
- ▶ **Networking floating**, created by a user. FlexNet daemons are installed on a networked license server system, allowing for concurrent use (compilation) by multiple networked client systems, up to the number of licensed seats purchased. The license server for network floating licenses can run on either Linux or Windows.

For specific details on how to obtain a license key, refer to Step 2 of [Basic PVF Installation](#).

3.2.2. Licensing Key Capabilities

At the conclusion of the Starter license key evaluation interval, the PGI compilers and tools, along with any executable files generated with them, will cease to function. To retain functionality, any executables, object files, or libraries created using the PGI compilers with starter license keys must be recompiled with either a community or permanent license key. See [Licensing Key Comparisons](#) below for details.

Executable files generated using community or permanent license keys are unconstrained, and run on any compatible system regardless of whether the PGI compilers are installed.

3.2.3. Licensing Key Comparisons

Table 3 License Key Comparisons

License Key Type	Starter	Community	Permanent Node-locked	Permanent Network Floating
Limited duration	Yes - 30-90 days	Yes - 1 year	No - Perpetual	No - Perpetual
Time-limited executables	Yes	No	No	No
FlexNet daemons required	No	No	Yes	Yes
Concurrent users	No	No	No	Yes

3.2.4. Licensing Key Dependencies

When using permanent license keys, you must install the PGI software before obtaining your license keys. The license key generation process requires information generated during software installation. Starter and community license keys do not have this dependency.



Important If you change the configuration of your system by adding or removing hardware, permanent license keys may become invalid. You will need to obtain new license keys from pgicompile.com or using the license setup tool described below.

3.3. The FlexNet License Manager

PGI Visual Fortran uses the FlexNet software license management system from Flexera Software.

As part of the installation process, PGI Professional Edition users can install and configure the FlexNet license management software. There are two permanent licensing options using FlexNet licensing.

- ▶ **Node-locked** allows any user on a single system to run the software, with access restricted to that prespecified machine.
- ▶ **Network floating license** supports a more flexible licensing system.
 - ▶ There is one license server on a network and any system on that network with a properly configured version of PGI Visual Fortran installed can run the software.
 - ▶ Multiple users can use PGI Visual Fortran simultaneously from multiple systems on the network.

- ▶ The limitation on the number of user+system combinations is determined by the number of seats that were purchased with the license.



A user continues to keep a license checked out as long as they have a PVF project open or the PVF debugger is attached to a process.

3.4. PGI Licensing Considerations

PGI licensing is the common method used by all PGI products to control access. The License Service is made up of two components:

- ▶ The `lmgrd` daemon is the common license manager component used by all FlexNet licenses. It oversees the distribution of *license seats*.
- ▶ The `pgroupd` daemon is unique to PGI and reads and decodes the PGI license file.

A license is created using the *hostname* and the *hostid* of the license server. These rules apply:

- ▶ Only one copy of `lmgrd` runs on the license server, and is used by all FlexNet-type licenses. For both floating or node-locked licenses, only a single license server is required.
- ▶ Only one PGI license per license server. You may have FlexNet licenses for other non-PGI software packages, but you may only have one PGI license per server. More than one causes the license server to malfunction.
- ▶ The *hostname* used in the license file should be understood by all of the systems using the compilers. Entering the command `ping hostname` should result in the same IP address on all of the systems, including the license server itself.
- ▶ The *hostid* is usually the MAC (inet address) of a device (`/sbin/ifconfig` on Linux and macOS, `ipconfig /all` on Windows), which can be detected by the FlexNet utilities. It is usually best to choose the MAC associated with the IP address of the server.
- ▶ There is a sequence in which the PGI compilers look for environment variables.
 - ▶ The PGI compilers look first at the environment variable `$PGROUPD_LICENSE_FILE` for the location of the PGI license. This variable is set in the registry on Windows machines, and is specific to PGI products.
 - ▶ The PGI compilers next look at the environment variable `$LM_LICENSE_FILE` for the location of the PGI license. This is a generic variable used by every FlexNet licensed product.
 - ▶ The PGI compilers then look at the default location for `$PGI/license.dat`.
- ▶ On the license server itself, `$PGROUPD_LICENSE_FILE` and/or `$LM_LICENSE_FILE` must be the full license pathname, as in `/opt/pgi/license.dat` on Linux and macOS, or `C:\Program Files\PGI\license.dat` on Windows.
- ▶ On machines other than the license server, `$PGROUPD_LICENSE_FILE` and/or `$LM_LICENSE_FILE` can either be a full pathname to the license file, or `port@host` such as `27000@hostname`.

- ▶ When changing a license file, take care to ensure the license software can read the new license. On Windows and macOS, this means having Admin privileges or *sudo* capability to copy the license file to its destination. If the license service is already running, you may need to STOP and START it again to make sure the new file is read and not the old file that is stored in cache.
- ▶ When the FlexNet license service detects a problem or an event, it records it in either the `flexlm.log` file (Linux) or the `License.log` file (Windows, macOS). If you're having licensing problems, check this file for information.

3.5. License Support

All new PGI licenses include free PGI Support Service during the money-back guarantee period. For more information about this service and how to extend it, refer to [Product Support](#).

Chapter 4.

INSTALLING PGI VISUAL FORTRAN

The following process of installing PGI Visual Fortran on a Windows system is applicable to permanent or trial installations. This installation process involves:

- ▶ Installing PVF on a single system.
- ▶ Setting up the license service for permanent licenses.



The following instructions guide you in installing PGI Visual Fortran on a single Windows system. If you are setting up PGI Visual Fortran for use with a network floating license, first refer to [PVF Installation on Client](#).

4.1. Prerequisites

The [Microsoft Windows Software Development Kit \(SDK\)](#), pgicompilers.com/microsoft-sdk is a prerequisite for all PGI Windows installations.

PGI's compilers leverage the latest Microsoft tool chain. To use these tools on operating systems older than Windows 10, you must first install Microsoft's Update for Universal C Runtime. Download and install this update here: <http://support.microsoft.com/en-us/kb/2999226>. Depending on the configuration details of your system, this update may have already been installed as part of the automatic Windows Updates applied to your system.

To install PVF, you must first install Microsoft Visual Studio 2015. Visual Studio 2015 Community, Professional and Enterprise are supported. The Visual Studio Express Edition is not supported.

The PVF installer detects the versions of Visual Studio on your system and installs the PVF integration components for the supported versions.

- ▶ To install PVF for Visual Studio 2015, there are no other prerequisites.

4.2. Basic PVF Installation

Once you have completed the prerequisites, you are ready to install. Follow these steps:

1. Run the PVF installation package as Administrator.

Administrative privileges are required to install PVF.

- ▶ Run the PVF installation executable on the target machine.
- ▶ Follow the directions printed to your screen.

2. Run PGI Licensing.

At the conclusion of the installation process, the PVF installer runs the PGI License Setup tool. This tool automates [Manual PVF Licensing](#).

To use the tool, your computer must meet these prerequisites:

- ▶ Be connected to the Internet.
- ▶ Have Microsoft .NET Framework 2.0 or higher installed.
- ▶ Have Internet Explorer Version 6.0 or higher installed and configured. For PVF 19.5 with Visual Studio 2015, IE version 10.0 or newer is required.

If your computer is not connected to the Internet or does not meet these minimum prerequisites, then click the tool's Cancel button and run the PGI License Setup tool later. You can locate this tool in the PGI Visual Fortran folder.

PGI Visual Fortran | Licensing | Generate License

When you run the program, the PGI License Setup tool walks you through the license installation process. It prompts you for your PGI web account login, which is your email address, your password, and the type of license you wish to install, such as a two-week trial license or a permanent license. The tool also informs you of any problems it experiences with installation and instructs you how to proceed.

3. Optionally, install a Visual Studio Service Pack.

Updates to Visual Studio 2015 are supported by PVF but you are not required to upgrade.

You can obtain Visual Studio updates from [the Microsoft web page, http://www.microsoft.com/downloads](http://www.microsoft.com/downloads).

4. Start PGI Visual Fortran.

Your installation is now complete and you should be able to start up PVF.

- ▶ On Windows 8.1, or Server 2012, click on the Visual Studio icon on the Start screen.
- ▶ For systems with a Start menu, select Start | All Programs | PGI Visual Fortran. Click on the entry for the version of PVF that you want to start.

4.3. Manual PVF Licensing

If you did not successfully run the PGI License Setup tool as described in step 2 of [Basic PVF Installation](#), you can manually install PVF licensing.

The instructions in this section help you obtain a license, put it on your system, and start the PGI License Service so you can use PVF. Manual PVF Licensing requires four basic tasks:

1. Get a PVF License.
2. File your license key.
3. Start the PGI License Service.
4. Start PGI Visual Fortran.

The following sections describe how to perform these tasks.

1. Get a PVF license.

The PGI Visual Fortran compilers and tools on Windows are license-managed using FLEXnet licensing. This system requires that you possess a valid license for the licensed product. You get the license from [the PGI website](http://www.pgicompilers.com/license), pgicompilers.com/license. If you do not have a web account, go to pgicompilers.com/register to create one.

To obtain a license, you first need to gather the following information:

- ▶ The username and password required to connect to the pgicompilers.com website. This username and password are the same username (email address) and password you used to download the installation software from the web site.
- ▶ The FLEXlm hostid and hostname of the computer on which PGI Visual Fortran is installed.



It is easy to get the hostid and hostname of your system once you have installed the products.

Open a PVF Command Prompt window. If you have a Start menu, select **All Programs | PGI Visual Fortran Command Shells | PVF Cmd**. If you have a Start screen, navigate to All Apps, then select the PVF Cmd icon.

To get the hostid, enter this command at the prompt:

CMD> Imutil lmhostid

You see output similar to the following in which 12345678abcd is unique to your system.

```
lmutil - Copyright (c) 1989-2011 Flexera Software, Inc.
All Rights Reserved.
The FLEXnet host ID of this machine is "12345678abcd"
```

To get the hostname, enter this command at the prompt:

CMD> Imutil lmhostid -hostname

You see output similar to the following in which 12345678abcd is unique to your system.

```
lmutil - Copyright (c) 1989-2011 Flexera Software, Inc.
All Rights Reserved.
The FLEXnet host ID of this machine is "HOSTNAME=yourHostName"
```

Though the above command returns output in the form `HOSTNAME=yourHostName`, when you create a license, use only the actual hostname, that is, `yourHostName`

in the hostname field. For example, if the information displayed is
 HOSTNAME=abcd1234, then use only abcd1234.

Using this information, go to the PGI license generation website, log in using your
 username and password, and generate your license.

Generate License Keys

Once you have logged on at <https://www.pgroup.com/login> using your registered
 PGI web-user email and password, you will see a screen similar to the following one:

Welcome

Use the links below to manage your PGI account.

[Download software](#) – For updating or evaluation.

[Manage PGI products](#) – Purchase, Support Service, and ownership information.

[Create permanent keys](#) – Create permanent software license keys.

[Tie a PIN to this account](#) – Use a PIN code to tie a PIN to your account and create permanent license keys.

[Update account](#) – Update contact information, change password, or modify email preferences.

[FAQ](#) – Answers to common questions.

Generate a Permanent License Key

1. Click **Create permanent keys**.
2. Click the PIN associated with the product for which you wish to generate license
 keys. If you don't see any PINs listed, you first need to tie one to your account:
 - a. Obtain your PIN code from your original PGI order confirmation
 email, in the section labeled: "SHARING ADMINISTRATION" or contact
license@pgroup.com.
 - b. Click the link: Tie a PIN to this account.
 - c. Enter the 16-digit PIN code and follow the instructions provided.
3. Click **License keys** to generate the keys.

Generate a Trial License Key

1. Click **Create trial keys**.
 2. Accept the terms of the agreement.
 3. Enter any one of the FLEXnet hostids detected, exactly as it appears in the
 message that is displayed during installation or when you issue the command:
CMD> lmutil lmhostid
 4. Click the **Generate License keys** button.
2. File Your License Key.

Once you have a PVF license, you must store it with Administrator privileges in
 the license file on your system, a file called `license.dat`. In a typical installation
 configuration, where `C:` is the system drive, put the license in this file:

C:\Program Files\PGI\license.dat

- ▶ If you have not previously received license keys from PGI and the `license.dat` file exists, replace the contents of the `license.dat` file created during installation with the license keys you generated using the preceding steps. Otherwise, you must create the file.
- ▶ If the license keys in the file are for a previous release of the same product, overwrite the keys.
- ▶ If you have not previously received a license from PGI, you must create this file.



You must have Administrator privileges to modify or replace the `license.dat` file.

If your `license.dat` file already contains keys that you previously received from PGI, first make a copy of the existing `license.dat` file in case you encounter a problem with the new license.

3. Start the PGI License Service.

The PVF installation creates a Windows Service called PGI License Service. The actions related to this service depend on the type of license you are using:

- ▶ **Trial or starter**—If you have obtained a trial or starter license, then no action is required.
- ▶ **Permanent**—If you have obtained a permanent license, the FLEX license system requires that a license server be running. Thus you must now start the PGI License Server.

As soon as a valid `license.dat` file is in place, as described in "Step 2. File Your License Key", you can start the PGI License Server.

1. Open the Services dialog from the Control Panel: Control Panel | Administrative Tools | Services
2. Scroll through the list and select "PGI License Server".
3. Select **Start**, if the PGI service is stopped. If the PGI service is running, STOP and then START it. This process guarantees that the new PGI license is served and that the older, cached PGI license is no longer active.



The PGI License Server service starts automatically on system reboot provided that the `license.dat` file contains valid keys.

4. Start PGI Visual Fortran.

Your license setup is now complete and you should be able to start up PVF.

- ▶ On Windows 8.1, or Server 2012, click the Visual Studio icon on the Start screen.
- ▶ For systems with a Start menu, select Start | All Programs | PGI Visual Fortran. Click the entry for the version of PVF that you want to start. .

Chapter 5.

PVF MULTI-USER INSTALLATION AND LICENSING

If you are installing PGI Visual Fortran for multiple users, you set up one system as a license server and one or more different systems as clients. As you see in scenario A that follows, the license server can also be a client.

When PVF is invoked on one of the client systems, it contacts the license server to check out a network floating PVF license. The steps you take to set up the license server are different than the steps you take to set up the clients. This section describes the entire process.

Server Designation

When you are installing PGI Visual Fortran with the intention of using a multi-user network floating license, you must designate a machine to be the system that serves PGI Visual Fortran licenses. Let's call this machine the FLEX license server.

There are a number of different ways to set up the FLEX license server, and how you choose to proceed depends on your needs. Before you begin the installation, select the scenario that best matches the configuration that you want for your FLEX license server.

This installation guide covers the following situations:

Scenario A: The FLEX license server is a Windows system. You want to install PGI Visual Fortran on it as well as on the client systems.

Scenario B: The FLEX license server is a Windows system. However, you do not want to install PGI Visual Fortran on it.

Scenario C: The FLEX license server is a Linux system.

Once you have determined the scenario that fits your needs, move on to the section that provides the specific steps for your licensing server scenario.

5.1. Scenario A - License Server (Windows) with PVF Installed

Use these steps if your FLEX license server is a Windows system and you want to install PGI Visual Fortran on it as well as on the client systems.

1. Install PVF on the license server.

To do this, follow the instructions in [Basic PVF Installation](#).

2. Enable licensing on the license server.

To do this, follow the instructions in [Manual PVF Licensing](#).

3. Install PVF on each client.

To do this, follow the instructions in [PVF Installation on Client](#).

5.2. Scenario B - License Server (Windows) without PVF Installed

Use these steps if your FLEX license server is a Windows system but you do not want to install PGI Visual Fortran on it.

1. Install the PGI License Server on the license server.

To use a Windows system as the FLEX license server for PVF, the system must have the PGI License Server components installed on it. These components are included in all PGI products, but they are also available in a standalone installation package.

First, use the system's Add or Remove Programs Dialog to check for the presence of PGI FLEXlm License Server components:

- ▶ If the PGI FLEXlm License Server 11.14 is installed, proceed to Step 2.
- ▶ If any PGI product is installed that is version 2013 or newer, the system already has the components that it needs. Proceed to Step 2.
- ▶ If any previous version of PGI FLEXlm License Server is installed, use the Add or Remove Programs dialog to uninstall this product. A PVF license requires a newer version of the FLEX tools. Proceed with this step.

Next, download the [PGI License Server 11.14 installation package](http://www.pgroup.com/support/download_licensing.php), www.pgroup.com/support/download_licensing.php.

Finally, log on to the system as Administrator and run the PGI License Server 11.14 installer.

2. Enable licensing on the license server.

To do this, follow the instructions in [Manual PVF Licensing](#).

3. Install PVF on each client.

To do this, follow the instructions in [PVF Installation on Client](#).

5.3. Scenario C - License Server (Linux)

Use these steps if you use a Linux system as your FLEX license server.



This scenario is only recommended for users already familiar with using FLEX on Linux.

1. Install the 11.10 FLEX Tools on the Linux license server.

To use a Linux system as the FLEXnet license server for PGI Visual Fortran, FLEXnet tools must be installed on the Linux system. Further, these FLEXnet tools must be version 11.10 or newer.

To download a version of FLEXnet tools for Linux that will support PGI Visual Fortran network floating license keys, go to https://www.pgroup.com/support/download_licensing.php.

2. Obtain a PVF license from PGI.

Using the information in your order confirmation, and the hostid and hostname of the Linux FLEX license server system, obtain PVF license keys from pgicompilers.com/license.

3. Add the PVF license to `license.dat`.

Add the PVF license to the `license.dat` file used by the FLEXnet Tools on the Linux FLEX license server.

If necessary, restart the FLEX license server, typically `lmgrd`.

4. Install PVF on each client.

To do this, follow the instructions for [PVF Installation on Client](#).

5.4. PVF Installation on Client

Use the following steps to install PVF on a client system. You should have already completed the steps listed for setting up the FLEX license server. Your actions, outlined in the previous sections, depend on whether you chose Scenario A, B, or C.

1. Install PVF on the client.

To do this, follow the instructions in [Basic PVF Installation](#).

2. Fix the `license.dat` file on the client.

This step involves these actions:

- ▶ Put the `license.dat` file from the FLEX license server on each client. If a `license.dat` file already exists on the client, then replace it with the one from the server.
- ▶ Change the Startup Type for the PGI License Server on the client from "Automatic" to "Manual".

This change stops the PGI License Server from automatically starting when the client is rebooted.

To set the startup type to Manual, do this:

1. Open the Services dialog from the Control Panel: **Control Panel | Administrative Tools | Services**
2. Scroll through the list and select "PGI License Server."
3. Select "Properties."
4. In the Properties dialog, from the Startup Type drop-down list, select "Manual."
5. Click OK.



The default action after a PVF installation is for this service to automatically start after a reboot. The client is obtaining a license from the system on the network that contains the licenses. Setting the client PGI License Server startup type to Manual is an important step.

Test the licensing setup by starting Visual Studio on the client system and verify that you can create a PVF project.

3. Repeat both steps 1 and 2 *for each client*.

Chapter 6.

USE LICENSING ENVIRONMENT VARIABLES

This section describes two environment variables that you can use with FLEXnet:

```
PGROUPD_LICENSE_FILE  
FLEXLM_BATCH
```

6.1. PGROUPD_LICENSE_FILE

The system environment variable `PGROUPD_LICENSE_FILE` is not required by PVF, but you can use it to override the default location that is searched for the `license.dat` file.

To use the system environment variable `PGROUPD_LICENSE_FILE`, set it to the full path of the license key file. To do this, follow these steps:

1. Open the System Properties dialog from the Control Panel's **System** option.
2. Select the **Advanced** tab.
3. Click the **Environment Variables** button.
 - ▶ If `PGROUPD_LICENSE_FILE` is not already an environment variable, create a new system variable for it. Set its value to the full path of your `license.dat` file.
 - ▶ If `PGROUPD_LICENSE_FILE` already exists as an environment variable, append the path to the license file in the variable's current value using a semi-colon to separate entries.

6.2. FLEXLM_BATCH

By default, on Windows, the license server creates interactive pop-up messages to issue warnings and errors. This behavior is controlled by the environment variable `FLEXLM_BATCH`.

Although it is not recommended, you can prevent interactive pop-ups from appearing. To do this, set the environment variable `FLEXLM_BATCH` to 1.

Chapter 7.

PGI VISUAL FORTRAN DEFAULT DIRECTORY STRUCTURE

This section shows the default installation location of the contents of PGI Visual Fortran. This default installation directory depends on your platform.



Throughout this section, we assume that the Windows system drive is C.

On Windows x64 platforms, the default installation directories are

```
C:\Program Files\PGI
C:\Program Files (x86)\PGI
C:\Program Files (x86)\PGI\Microsoft Visual Studio <N>\PGI Visual Fortran
```

where <N> can be either or both 12.0 and 14.0, depending on the versions of Visual Studio installed on your system.

In addition to these product directories, the FLEXnet license management tools are installed here:

```
C:\Program Files\PGI\flexlm
```

Chapter 8.

COMMON INSTALLATION ISSUES

This section contains information about problems that may occur during the installation process as well as tips on setup information.

8.1. Windows Firewall and PVF Debugging

Microsoft Windows Firewall runs by default on some Windows systems. Unless the PVF debug engine components are included in the Windows Firewall Exceptions list, Windows Firewall may try to block the PVF debug engine when you debug a program.

Automatic Additions to Windows Firewall Exceptions List

When PVF is installed

If Windows Firewall is enabled when PVF is installed, certain components are automatically added to the Exceptions list. For PGI Visual Fortran, these components appear as follows:

- Microsoft Visual Studio 2015
- PGI Debugger 2019

When PVF is uninstalled

If Windows Firewall is enabled when PVF is uninstalled, the components previously listed are automatically removed from the Exceptions list.

When using PVF to Debug

If the PVF Debug Engine components are not listed in the Exceptions list and Windows Firewall is enabled when you use PVF to debug, the Firewall displays a dialog that allows you to Unblock the PVF debug engine components. If you choose the Unblock

option, Windows Firewall adds the component to its list of Exceptions and you do not see the pop-up dialog again unless you reinstall.



Tip On rare occasions, this pop-up may prevent the debug session from starting correctly. If this occurs, use the Task Manager to end the debug session.



You can manually add these components to the Windows Firewall list of Exceptions.

8.2. Troubleshooting

The most common installation problems are related to licensing.

To troubleshoot your installation, first check that the `license.dat` file you are using contains a valid license. Then, if you are using permanent node-locked licensing, check that the PGI License Server, a Windows Service, is started on the system that is providing the licensing.

Typical FLEX errors encountered may include the following:

- ▶ **Error:** When starting the PGI License Server, a system message appears that states 'The PGI License Server service on Local Computer started and then stopped. Some services stop automatically if they have no work to do, for example, the Performance Logs and Alerts service.'

Possible Solution: This message may appear because the `license.dat` file accessed by the FLEX License Manager does not contain a valid license or the license you have does not allow PGI License Server to run. Verify your PVF license is valid.

- ▶ **Error:** When starting PGI Visual Fortran, a FLEXible License Manager dialog appears that states 'pvf: LICENSE MANAGER PROBLEM: No such feature exists.'

Possible Solution: This message may appear because the `license.dat` file accessed by the FLEX License Manager does not contain a valid license. Verify your PVF license is valid.

- ▶ **Error:** When starting PGI Visual Fortran, a FLEXible License Manager dialog appears that states 'pvf: LICENSE MANAGER PROBLEM: Cannot connect to license server system.'

Possible Solution: This message may appear because the PGI License Server has not been started. Start the server manually, if necessary.

- ▶ **Error:** When using a compiler or tool from the PVF command line, a message stating 'LICENSE MANAGER PROBLEM: Failed to checkout license' appears.

Possible Solution: This message may appear because the PGI License Server has not been started. Start the server manually, if necessary.

8.3. Installation Errors to Ignore

Occasionally an installation produces one of the following error messages, or something similar. These errors do not interfere with proper installation and can safely be ignored.

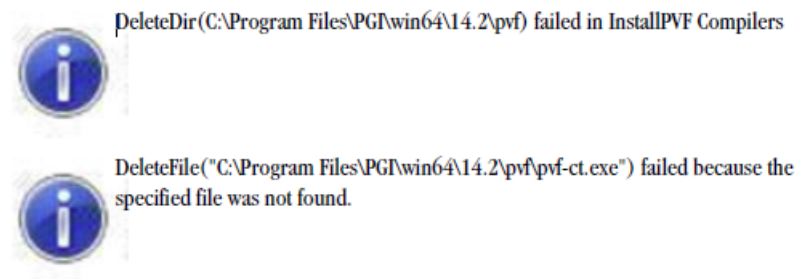


Figure 2 PVF Installation Errors to Ignore

Chapter 9.

CO-INSTALLATION

This section describes how to co-install PGI command-line products with PGI Visual Fortran.

Co-installation of PGI command-line Products with PGI Visual Fortran

PGI compilers and tools can be co-installed with PGI Visual Fortran as long as the version of PGI Workstation being installed has the same or newer version than the version of PGI Visual Fortran.



If it is necessary to install an older version of PGI Workstation on a system where PVF 19.5 has already been installed, uninstall PVF 19.5, install PGI Workstation, then re-install PVF.

Any version of PVF can be installed on a system where PGI Workstation has been installed.

Chapter 10.

UNINSTALLING PVF

To uninstall PVF, use the following guidelines:

- ▶ Administrative privileges are required to uninstall.
- ▶ Make sure that Visual Studio is not running when uninstalling PVF.
- ▶ There are two components to PVF:

- Compilers, tools, and libraries

- Visual Studio integration components

These components may be uninstalled separately, allowing users to maintain multiple versions of the compilers on their system. These components appear in the Control Panel | Add or Remove Programs dialog as follows:

- PGI Visual Fortran (compilers only) 19.5

- PGI Visual Fortran

- ▶ The PVF install package requires but does not include a version of the Microsoft Windows SDK. PVF for Visual Studio 2015 requires the Windows 10 SDK. These components appear listed in Add or Remove Programs under "Windows Software Development Kit" with specific version information.



Take care when uninstalling these components to ensure that no other software on the system depends on them.

If there are problems while uninstalling PVF, try reinstalling the product, then uninstall again.

Chapter 11.

CONTACT INFORMATION

You can contact NVIDIA's PGI compilers and tools team at:

9030 NE Walker Road, Suite 100
Hillsboro, OR 97006

Or electronically using any of the following means:

Fax: +1-503-682-2637

Sales: sales@pgroup.com

WWW: <https://www.pgroup.com> or pgicompile.com

The [PGI User Forum](http://pgicompile.com/userforum), pgicompile.com/userforum is monitored by members of the PGI engineering and support teams as well as other PGI customers. The forums contain answers to many commonly asked questions. [Log in to the PGI website](#), pgicompile.com/login to access the forums.

Many questions and problems can be resolved by following instructions and the information available in the [PGI frequently asked questions \(FAQ\)](#), pgicompile.com/faq.

Submit support requests using the [PGI Technical Support Request form](#), pgicompile.com/support-request.

Notice

ALL NVIDIA DESIGN SPECIFICATIONS, REFERENCE BOARDS, FILES, DRAWINGS, DIAGNOSTICS, LISTS, AND OTHER DOCUMENTS (TOGETHER AND SEPARATELY, "MATERIALS") ARE BEING PROVIDED "AS IS." NVIDIA MAKES NO WARRANTIES, EXPRESSED, IMPLIED, STATUTORY, OR OTHERWISE WITH RESPECT TO THE MATERIALS, AND EXPRESSLY DISCLAIMS ALL IMPLIED WARRANTIES OF NONINFRINGEMENT, MERCHANTABILITY, AND FITNESS FOR A PARTICULAR PURPOSE.

Information furnished is believed to be accurate and reliable. However, NVIDIA Corporation assumes no responsibility for the consequences of use of such information or for any infringement of patents or other rights of third parties that may result from its use. No license is granted by implication of otherwise under any patent rights of NVIDIA Corporation. Specifications mentioned in this publication are subject to change without notice. This publication supersedes and replaces all other information previously supplied. NVIDIA Corporation products are not authorized as critical components in life support devices or systems without express written approval of NVIDIA Corporation.

Trademarks

NVIDIA, the NVIDIA logo, Cluster Development Kit, PGC++, PGCC, PGDBG, PGF77, PGF90, PGF95, PGFORTRAN, PGHPF, PGI, PGI Accelerator, PGI CDK, PGI Server, PGI Unified Binary, PGI Visual Fortran, PGI Workstation, PGPROF, PGROUP, PVF, and The Portland Group are trademarks and/or registered trademarks of NVIDIA Corporation in the U.S. and other countries. Other company and product names may be trademarks of the respective companies with which they are associated.

Copyright

© 2013-2019 NVIDIA Corporation. All rights reserved.