



UFM Bright Cluster Integration Plugin

Table of contents

Overview

Deployment

Authentication

Bright Cluster Integration UI

Rest API

List of Figures

Figure 0. BMC2 Version 1 Modificationdate 1716900159437 Api V2

Figure 1. BMC1 Version 1 Modificationdate 1716900158553 Api V2

Figure 2. BMC3 Version 1 Modificationdate 1716900159783 Api V2

Overview

The Bright Cluster Integration plugin is a self-contained docker container managed by UFM and is managed by the REST APIs. It enables integrating data from Bright Cluster Manager (BCM) into UFM, providing a more comprehensive network perspective. This integration improves network-centered Root Cause Analysis (RCA) tasks and enables better scoping of workload failure domains.

Deployment

The Bright Cluster Integration plugin can be deployed either on the UFM Appliance or on UFM Software.

For detailed instructions on Bright Cluster Integration plugin deployment, refer to [UFM Bright Cluster Integration Plugin](#).

Authentication

The following authentication types are supported:

- basic (/ufmRest)
- client (/ufmRestV2)
- token (/ufmRestV3)

Bright Cluster Integration UI

1. After the successful deployment of the plugin, a new tab is shown under the UFM settings section for bright configurations management:

NVIDIA Settings

UFM Enterprise

- Dashboard
- Network Map
- Managed Elements
- Events & Alarms
- Telemetry
- System Health
- Jobs
- Settings**

Events Policy | Device Access | Network Management | Subnet Manager | Non-Optimal Links | User Management | Email | Remote Lo

Bright Configuration

Bright Configurations

Status: Disabled Enabled

Connection Status: **Healthy**

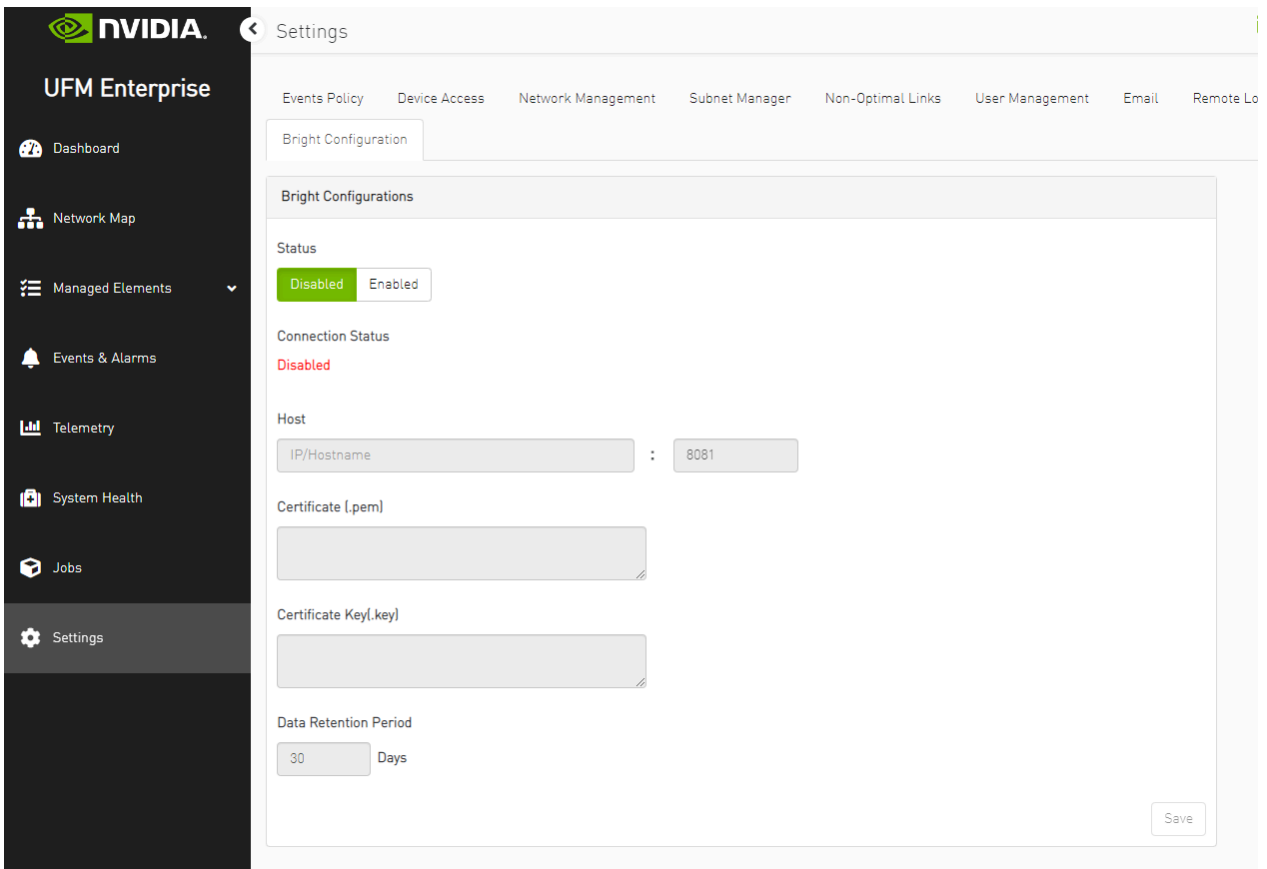
Host: :

Certificate [.pem]:
-----BEGIN CERTIFICATE-----
MIIDfzCCAmegAwIBAgIBEDANBgkqhkiG9w0BAQ0FAD

Certificate Key [.key]:
-----BEGIN PRIVATE KEY-----
MIIEvQIBADANBgkqhkiG9w0BAQEFAASCBCkwwggSjAg

Data Retention Period: Days

Save

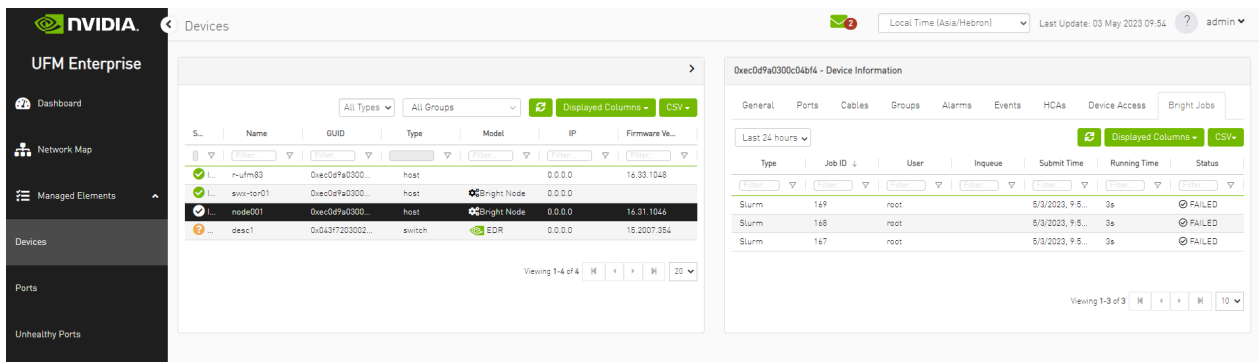


Fill the below required configurations:

Parameter	Description
Host	Hostname or IP of the BCM server
Port	Port of the BCM server, is typically 8081
Certificate	BMC client certificate content that could be located in the BMC server machine under .cm/XXX.pem
Certificate key	BMC client certificate key that could be located in the BMC server machine under .cm/XXX.key
Data retention period	UFM erases the data gathered in the database after the configured retention period. By default, after 30 days.

2. After you ensure you have successfully completed the plugin configuration, and that you have established a healthy connection with the BMC, navigate to the UFM Web

GUI -> Managed Elements -> Devices



Rest API

The following REST APIs are supported:

- PUT plugin/bright/conf
- GET plugin/bright/conf
- GET plugin/bright/data/nodes
- GET plugin/bright/data/jobs

For detailed information on how to interact with bright plugin APIs, refer to [NVIDIA UFM Enterprise > Rest API > UFM Bright Cluster Integration Plugin REST API](#).

© Copyright 2024, NVIDIA. PDF Generated on 06/06/2024